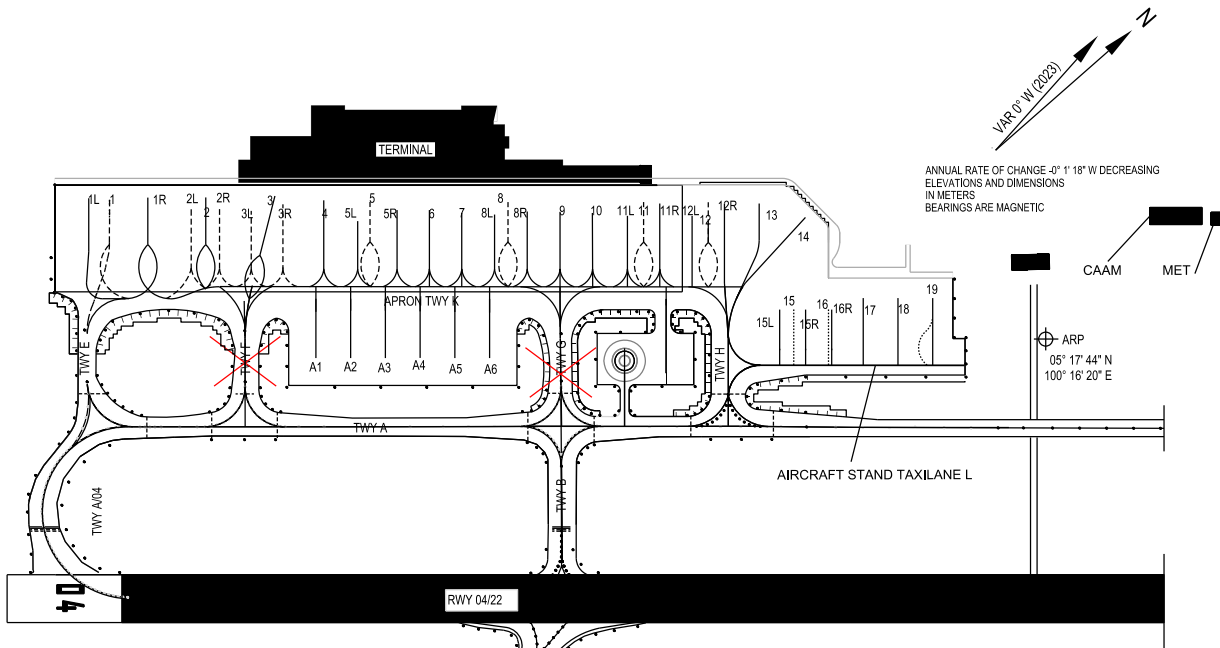


APRON ELEV
 4 M

TWR 121.1
 SMC 121.6
 121.9
 ATIS 126.4

**PENANG/PENANG
 INTERNATIONAL AIRPORT**



ANNUAL RATE OF CHANGE -0\"/>

CAAM MET

ARP
 05° 17' 44\"/>

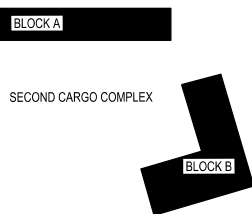
AIRCRAFT STAND TAXILANE L

RWY 04/22

AIRCRAFT STAND TAXILANE J1

IC3 C2 C1

SECOND CARGO COMPLEX

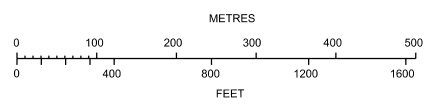


- TAXIWAY A, C AND E 23M WIDE
- TAXIWAY A/04 AND A/22 30M WIDE
- TAXIWAY B AND D 34M WIDE
- TAXIWAY F H 31M WIDE
- TAXIWAY H 42M WIDE
- TAXIWAY G 32M WIDE
- TAXIWAY J 25M WIDE
- APRON TAXIWAY K 24M WIDE
- AIRCRAFT STAND TAXILANE J1 48M WIDE
- AIRCRAFT STAND TAXILANE L 24M WIDE
- RESTRICTED ROUTE FOR B747-800 OPERATIONS ARE TAXIWAYS A, E, F, A04, A22 AND PARKING IS BAY 1

- BEARING STRENGTH TWY A PCR 577/F/A/W/U
- BEARING STRENGTH TWY A/04 PCR 787/R/A/W/U AND PCR 577/F/A/W/U
- BEARING STRENGTH TWY A/22 PCR 577/F/A/W/U
- BEARING STRENGTH TWY B PCR 643 /R/A/W/U AND PCR 481 /F/A/W/U
- BEARING STRENGTH TWY C PCR 481/F/A/W/U
- BEARING STRENGTH TWY D PCR 481/F/A/W/U
- BEARING STRENGTH TWY E PCR 577/F/A/W/U
- BEARING STRENGTH TWY F,H PCR 577/F/A/W/U
- BEARING STRENGTH TWY G PCR 577/F/A/W/U
- BEARING STRENGTH TWY J PCR 715 /R/B/W/U

- BEARING STRENGTH APRON TWY K PCR 1360/R/D/W/U
- BEARING STRENGTH AIRCRAFT STAND TAXILANE J1 PCR 715/R/B/W/U
- BEARING STRENGTH AIRCRAFT STAND TAXILANE L PCR 95/F/A/W/U

- AIRCRAFT STANDS A1, A1R, A1L, A3, A4, A4R, A4L, A5, A6, A6R FMT APIS ++ EQUIPPED
- AIRCRAFT STANDS A2, B1, B3, B5, B7 SAFEGATE EQUIPPED



LEGEND	
AIRCRAFT STAND	23
TAXIWAY LIGHT	•
RUNWAY-HOLDING POSITION	▬▬▬
INTERMEDIATE HOLDING POSITION	----
CLOSED MARKING	✗

CHANGES : ADD NEW INFO AIRCRAFT PARKING BAY NO 4.5L.5.A1 AND A2
 ADD INFO REMOVAL OF AIRCRAFT PARKING BAY NO A4R AND A3
 ADD NEW INFO AIRCRAFT PARKING BAY NO 5R.6.A3 AND A4
 ADD INFO REMOVAL OF AIRCRAFT PARKING BAY NO A2.A1L.A1 AND A1R,
 ADD NEW INFO AIRCRAFT PARKING BAY NO 7.8L.8.8R. A5 AND A6
 ADD INFO REMOVAL OF AIRCRAFT PARKING BAY NO B1.B3.B5 AND B7,
 ADD INFO CLOSED OPERATION FOR TAXIWAY F