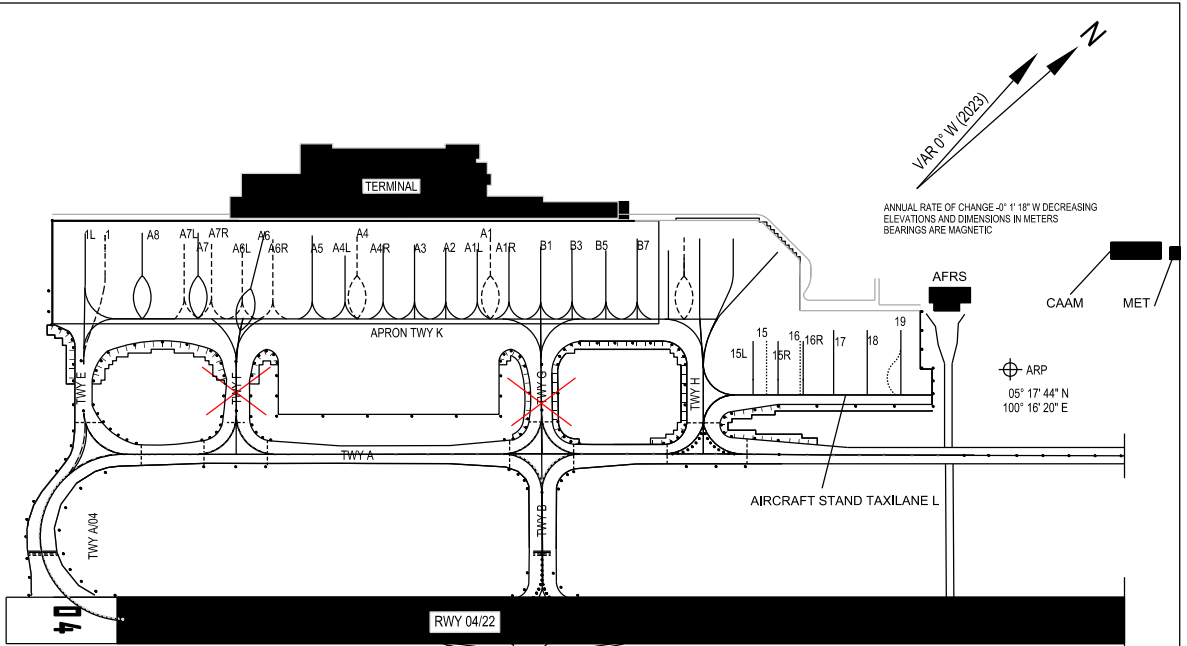


**AIRCRAFT PARKING/  
DOCKING CHART - ICAO**  
PHASE 3 (20260701 TIL 20270622 EST)

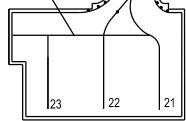
APRON ELEV  
4 M

TWR	121.1
SMC	121.6
	121.9
ATIS	126.4

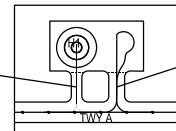
**PENANG/PENANG  
INTERNATIONAL AIRPORT**



AIRCRAFT STAND TAXILANE J1



HELICOPTER STAND  
TAXILANE M



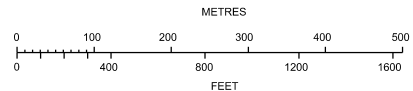
G.A. APRON LAYOUT

- TAXIWAY A, C AND E 23 M WIDE
- TAXIWAY A/04 AND A/22 30 M WIDE
- TAXIWAY B AND D 34 M WIDE
- TAXIWAY F AND H 31 M WIDE
- TAXIWAY G 42 M WIDE
- TAXIWAY J 25 M WIDE
- APRON TAXIWAY K 24 M WIDE
- AIRCRAFT STAND TAXILANE J1 48 M WIDE
- AIRCRAFT STAND TAXILANE L 24 M WIDE
- HELICOPTER STAND TAXILANE M 13 M WIDE
- AIRCRAFT STAND TAXILANE N 20 M WIDE

STANDARD TAXI ROUTE FOR B747-800 OPERATIONS ARE  
TAXIWAYS A, E, A04, A22 AND PARKING IS BAY 1

- BEARING STRENGTH TWY A PCR 577/F/A/W/U
- BEARING STRENGTH TWY A/04 PCR 787/R/A/W/U AND PCR 577/F/A/W/U
- BEARING STRENGTH TWY A/22 PCR 577/F/A/W/U
- BEARING STRENGTH TWY B PCR 643 /R/A/W/U AND PCR 481 /F/A/W/U
- BEARING STRENGTH TWY C PCR 481/F/A/W/U
- BEARING STRENGTH TWY D PCR 481/F/A/W/U
- BEARING STRENGTH TWY E PCR 577/F/A/W/U
- BEARING STRENGTH TWY F PCR 577/F/A/W/U
- BEARING STRENGTH TWY G PCR 577/F/A/W/U
- BEARING STRENGTH TWY H PCR 1250/R/C/W/T
- BEARING STRENGTH TWY J PCR 715 /R/B/W/U
- BEARING STRENGTH APRON TWY K PCR 1360/R/D/W/U
- BEARING STRENGTH AIRCRAFT STAND TAXILANE J1 PCR 715/R/B/W/U
- BEARING STRENGTH AIRCRAFT STAND TAXILANE L PCR 1250 / R / C / W / T
- BEARING STRENGTH HELICOPTER STAND TAXILANE M PCR 160/R/C/W/T
- BEARING STRENGTH AIRCRAFT STAND TAXILANE N PCR 160/R/C/W/T

AIRCRAFT STANDS A1, A1R, A1L, A3, A4, A4R, A4L, A5, A6, A6R FMT APIS ++ EQUIPPED  
AIRCRAFT STANDS A2, B1, B3, B5, B7 SAFEGATE EQUIPPED



LEGEND	
AIRCRAFT STAND	23
TAXIWAY LIGHT	•
RUNWAY-HOLDING POSITION	----
INTERMEDIATE HOLDING POSITION	----
CLOSED MARKING	✗

**CHANGES:** UPDATE TEMPORARY CLOSURE OF TAXIWAY F AND TAXIWAY G  
UPDATE REMOVAL OF AIRCRAFT PARKING BAY NO B2,B4,B6,B7 AND B5,  
UPDATE REMOVAL HS-1-CAUTION -VEHICLE CROSSING APRON TAXIWAY  
UPDATE NEW HELICOPTER STAND TAXILANE M, & AIRCRAFT STAND TAXILANE N  
UPDATE TEMPORARY CLOSURE OF BAY A6,A6L,A6R,A5,A4L,A4,A4R,A3,A2,A1R,A1,A1L,B1 AND B3,