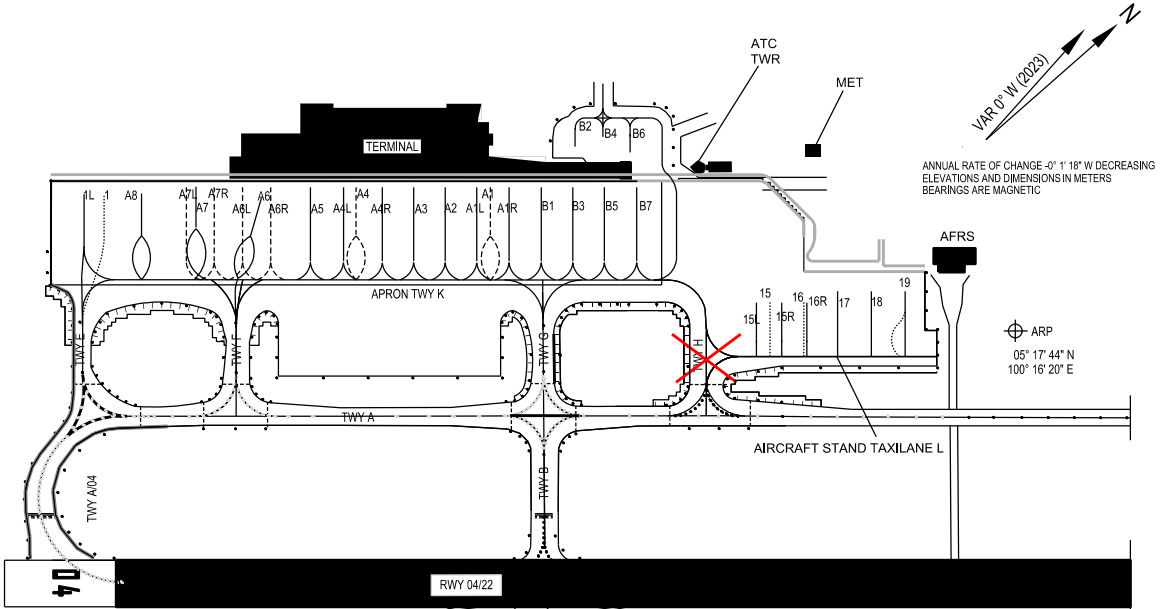


**AIRCRAFT PARKING/  
DOCKING CHART - ICAO**  
PHASE 2 (20250401 TIL 20260630 EST )

APRON ELEV  
4 M

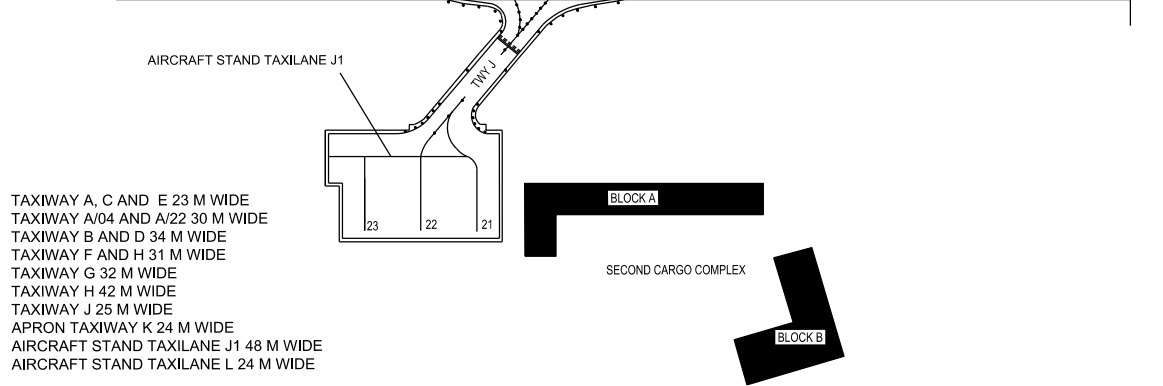
TWR	121.1
SMC	121.6
	121.9
ATIS	126.4

**PENANG/PENANG  
INTERNATIONAL AIRPORT**



ANNUAL RATE OF CHANGE -0° 1' 18" W DECREASING  
ELEVATIONS AND DIMENSIONS IN METERS  
BEARINGS ARE MAGNETIC

ARP  
05° 17' 44" N  
100° 16' 20" E

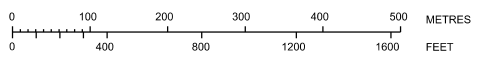


- TAXIWAY A, C AND E 23 M WIDE
- TAXIWAY A/04 AND A/22 30 M WIDE
- TAXIWAY B AND D 34 M WIDE
- TAXIWAY F AND H 31 M WIDE
- TAXIWAY G 32 M WIDE
- TAXIWAY J 25 M WIDE
- APRON TAXIWAY K 24 M WIDE
- AIRCRAFT STAND TAXILANE J1 48 M WIDE
- AIRCRAFT STAND TAXILANE L 24 M WIDE

STANDARD TAXI ROUTE FOR B747-800 OPERATIONS ARE  
TAXIWAYS A, E, A04, A22 AND PARKING IS BAY 1

- BEARING STRENGTH TWY A PCR 577/F/A/W/U
- BEARING STRENGTH TWY A/04 PCR 787/R/A/W/U AND PCR 577/F/A/W/U
- BEARING STRENGTH TWY A/22 PCR 577/F/A/W/U
- BEARING STRENGTH TWY B PCR 643 /R/A/W/U AND PCR 481 /F/A/W/U
- BEARING STRENGTH TWY C PCR 481/F/A/W/U
- BEARING STRENGTH TWY D PCR 481/F/A/W/U
- BEARING STRENGTH TWY E PCR 577/F/A/W/U
- BEARING STRENGTH TWY F,H PCR 577/F/A/W/U
- BEARING STRENGTH TWY G PCR 577/F/A/W/U
- BEARING STRENGTH TWY H PCR 1250/R/C/W/T
- BEARING STRENGTH TWY J PCR 715 /R/B/W/U
- BEARING STRENGTH APRON TWY K PCR 1360/R/D/W/U
- BEARING STRENGTH AIRCRAFT STAND TAXILANE J1 PCR 715/R/B/W/U
- BEARING STRENGTH AIRCRAFT STAND TAXILANE L PCR 1250/R/C/W/T

AIRCRAFT STANDS A1, A1R, A1L, A3, A4, A4R, A4L, A5, A6, A6R FMT APIS ++ EQUIPPED  
AIRCRAFT STANDS A2, B1, B3, B5, B7 SAFEGATE EQUIPPED



LEGEND	
AIRCRAFT STAND	23
TAXIWAY LIGHT	•
RUNWAY-HOLDING POSITION	====
INTERMEDIATE HOLDING POSITION	----
CLOSED MARKING	X

**CHANGES :** UPDATE NEW APRON TAXILANE L  
UPDATE TEMPORARY CLOSURE OF TAXIWAY H  
UPDATE NEW AIRCRAFT PARKING BAY NO 1L AND 1  
UPDATE REMOVAL OF AIRCRAFT PARKING BAY NO B9L,B9,B9R  
UPDATE REMOVAL OF EXISTING AIRCRAFT STAND TAXILANE L  
UPDATE NEW AIRCRAFT PARKING BAY NO 15L,15,15R,16,16R,17,18,19