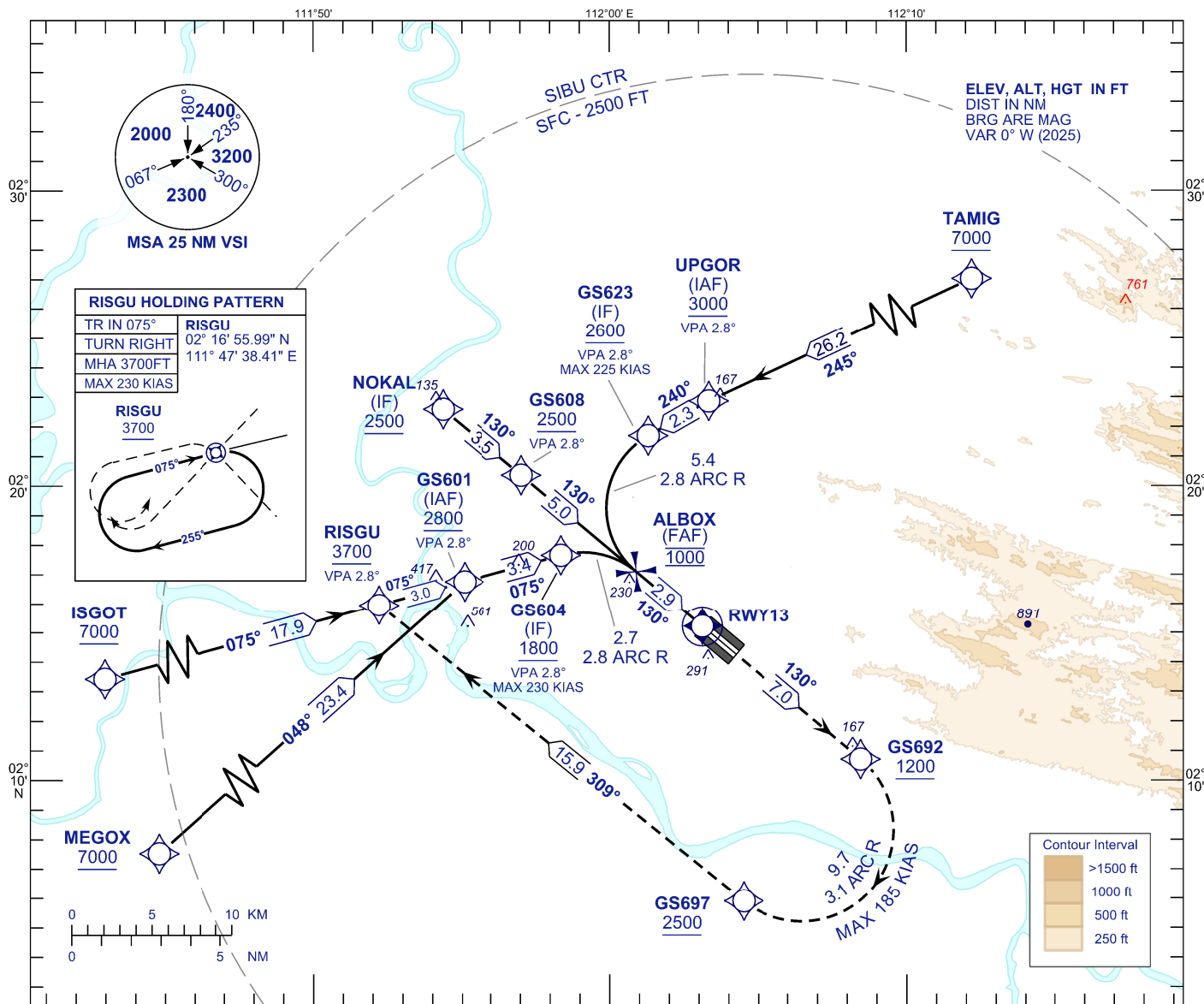


**INSTRUMENT
APPROACH
CHART - ICAO**

AERODROME ELEV 121 FT
HEIGHTS RELATED TO
THR RWY 13 - ELEV 81 FT

APP	122.60 (P), 124.40 (S)
TWR	123.20
SMC	121.90
ATIS	127.65

**SIBU/SIBU (WBGS)
RNP Z RWY 13 (AR)**



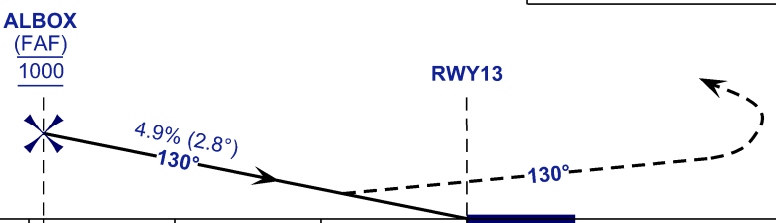
TCH 51
VPA 2.8°

TRANSITION LEVEL FL 130
TRANSITION ALT 11000

MISSED APPROACH
CLIMB TO 3700FT OR ABOVE VIA RNP Z MISSED
APCH TRACK TO RISGU AND HOLD,
OR AS DIRECTED BY ATC.

CAUTION
MISSED APPROACH TURN SPEED
MAX 185 KIAS

THR ELEV 81
TO THR 13 (NM)



STRAIGHT IN-APPROACH	OCA (H)	
CATEGORY OF AIRCRAFT	C	D
RNP 0.3	453 (372)	
CIRCLING AND ALTERNATE N/A		

AUTHORIZATION REQUIRED

NOTES

- 1) APPROACH NOT AUTHORIZED WHEN AIRPORT TEMPERATURE BELOW 19°C OR ABOVE 40°C.
- 2) RF REQUIRED.
- 3) WBGS ALTIMETER SETTING REQUIRED.
- 4) GNSS REQUIRED.
- 5) PAPI AND VERTICAL PATH ANGLE NOT COINCIDENT.
- 6) RNP 0.30 FROM IAF'S TO RWY.
- 7) RNP 0.50 FROM RWY TO GS692.

CHANGES : REVISE UPGOR, RISGU & GS601 HEIGHT RESTRICTION, ADD VPA.