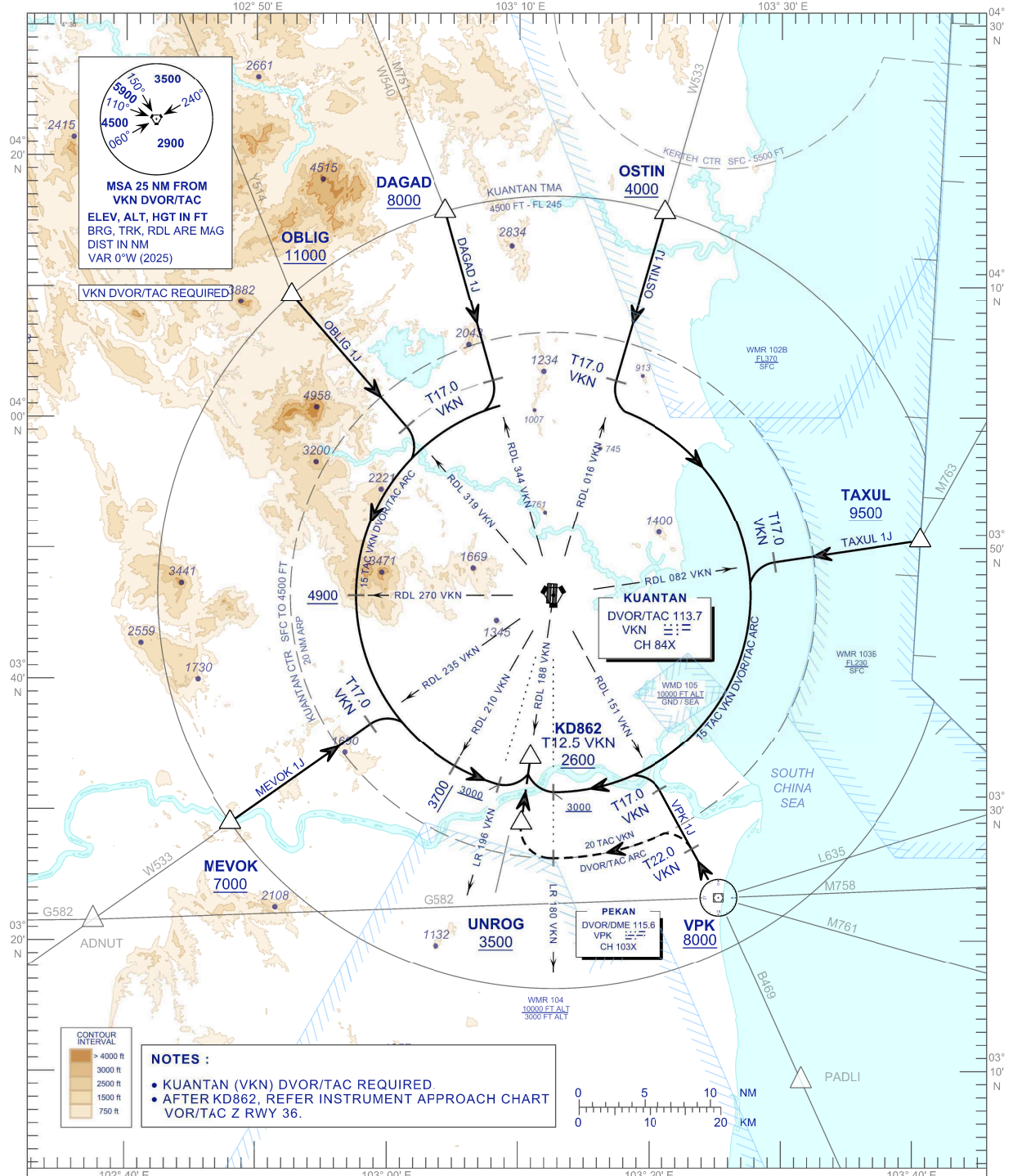


**STANDARD ARRIVAL CHART  
INSTRUMENT (STAR) - ICAO**

**TRANSITION ALTITUDE**  
11000 ft

TWR 118.10 , 238.10  
GND 120.40 , 263.90  
APP 119.70 , 249.30  
ATIS 127.50 , 253.80  
SRA 118.70 , 261.60

**KUANTAN/SULTAN AHMAD  
SHAH (WMKD)**  
**VOR/TAC ARC RWY 36**  
OSTIN 1J TAXUL 1J  
VPK 1J MEVOK 1J  
OBLIG 1J DAGAG 1J



CHANGES: THE ALTITUDE CONSTRAINT OF 3000 FT OR ABOVE APPLIES AT 15 TAC VKN BETWEEN LR-180 AND LR-196