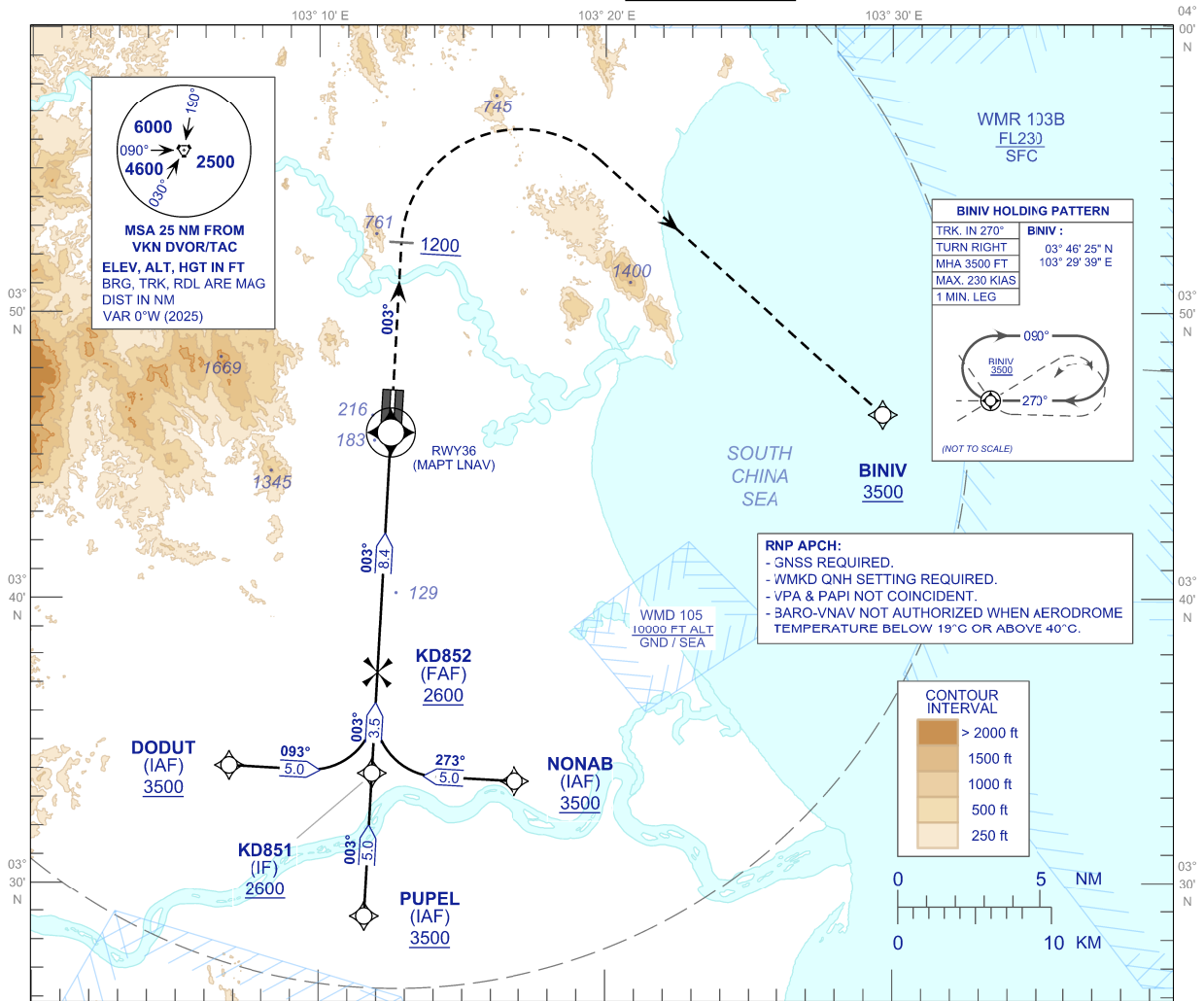


**INSTRUMENT  
APPROACH  
CHART - ICAO**

**AERODROME ELEV 55 ft**  
HEIGHT RELATED TO  
THR RWY 36 - ELEV 52 ft

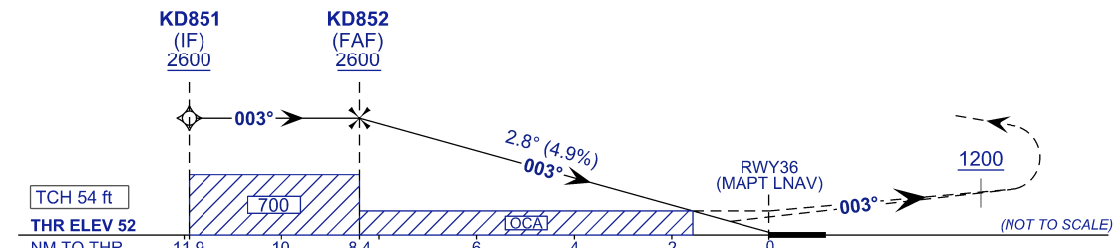
TWR 118.10 , 238.10  
GND 120.40 , 263.90  
APP 119.70 , 249.30  
ATIS 127.50 , 253.80  
SRA 118.70 , 261.60

**KUANTAN/SULTAN AHMAD  
SHAH (WMKD)  
RNP Y RWY 36**



TRANSITION LEVEL FL 130  
TRANSITION ALT 11,000 ft

**MISSED APPROACH:**  
CLIMB TO 3500 FT OR ABOVE ON TR 003°, ON PASSING 1200 FT TURN RIGHT TO BINIV AND HOLD, OR AS DIRECTED BY ATC.



CAT.	A	B	C	D
	318 (266)	331 (279)	366 (314)	377 (325)
LNAV / VNAV	318 (266)	331 (279)	366 (314)	377 (325)

DIST THR RWY36 (NM)	8.4	7.0	6.0	5.0	4.0	3.0	2.0	1.0
ALTITUDE (ft)	2600	2184	1886	1680	1202	095	608	400

GROUND SPEED (KT)	80	100	120	140	160	180
FAF - RWY36 (8.4 NM) (MIN:SEC)	6:18	5:03	4:12	3:36	3:09	2:48
RATE OF DESCEND (4.9%) (FT/MIN)	400	500	590	690	790	890

CHANGES: REMOVE PUPEL HOLDING PATTERN