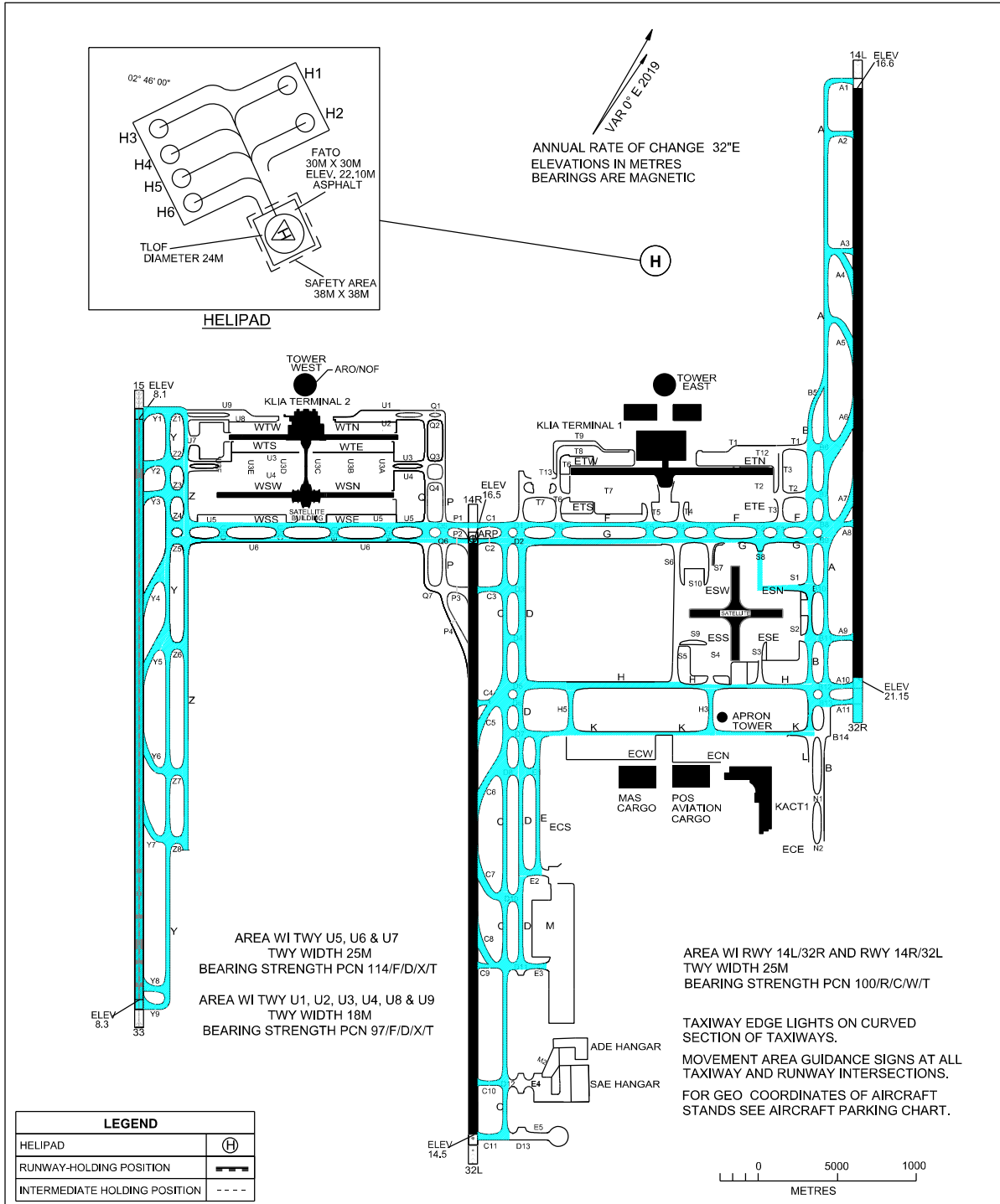


**CODE F TAXIWAYS
KLIA TERMINAL 1 &
KLIA TERMINAL 2**

APRON ELEV	RWY 14L/32R	RWY 14R/32L	RWY 15/33	GROUND	GROUND
EAST 19 M	TWR 118.800	TWR 118.500	TWR 119.800	122.150	121.725
WEST 10 M	GND 121.650	GND 121.800	GND 118.050	122.850	122.550
				122.275	130.750
				123.250	

**SEPANG/
KL INTERNATIONAL
AIRPORT**



CHANGES : UPDATE TWY M2.