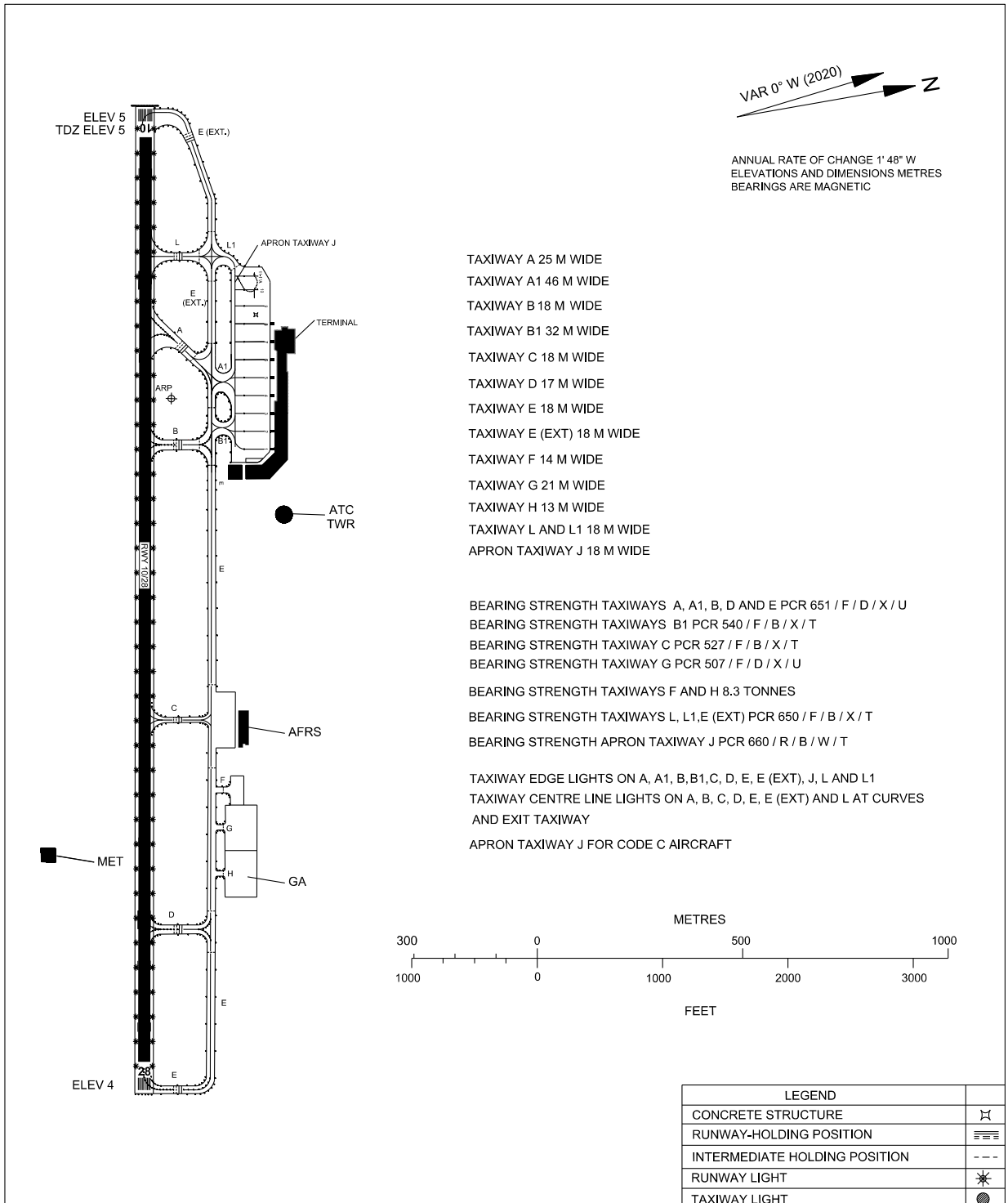


**AERODROME GROUND
MOVEMENT CHART - ICAO**

APRON ELEV
5 M

TWR	122.5
SMC	121.6
APP	120.85 (P)
	130.3 (S)
ATIS	128.85

**KOTA BHARU/SULTAN
ISMAIL PETRA AIRPORT**



CHANGES: TAXIWAY CENTRE LINE LIGHTS AT INTERSECTION OF TAXIWAY B & TAXIWAY B1
WIDTH AND STRENGTH OF TAXIWAY B & TAXIWAY B1
THRESHOLD AND WING BAR LIGHTS AT RUNWAY 10
TAXIWAY EDGE LIGHTS OF TAXIWAY B1
WIDTH OF TAXIWAY A1