

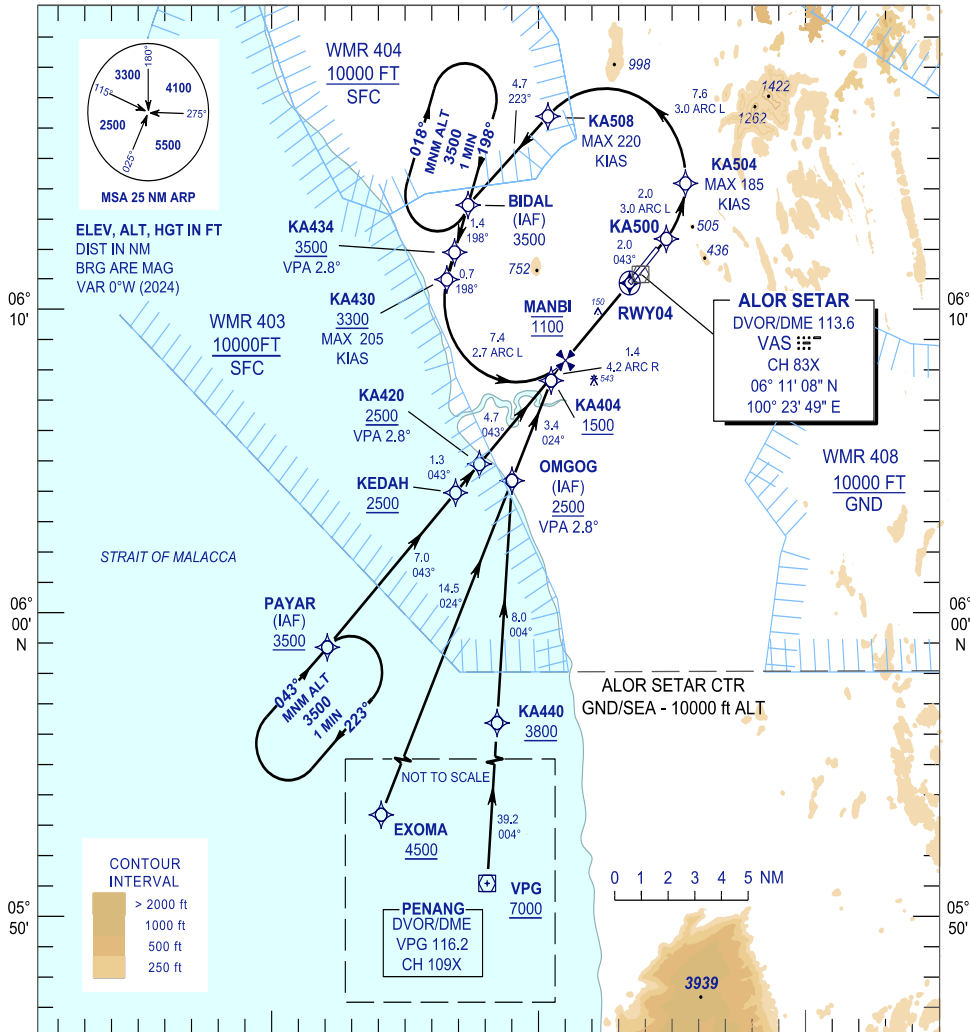
**INSTRUMENT
APPROACH
CHART - ICAO**

AERODROME ELEV 14 FT
HEIGHTS RELATED TO
THR RWY 04 - ELEV 12 FT

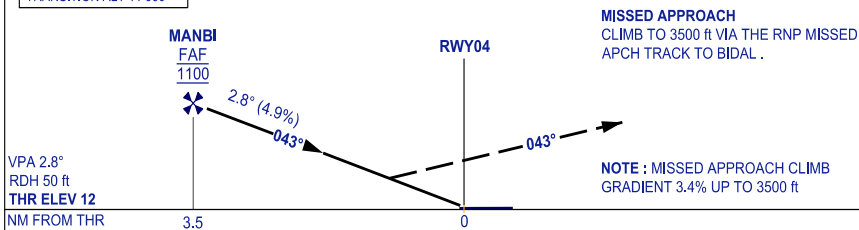
APP/TWR 122.3, 121.5
TRAINING 129.1
SMC 121.6
ATIS 128.65

**ALOR SETAR/
SULTAN ABDUL HALIM (WMKA)**

RNP Z RWY 04 (AR)



TRANSITION LEVEL FL 130
TRANSITION ALT 11 000



OCA/H	
ACFT CAT.	C D
RNP 0.3	430(418) / 2.3 KM

GROUND SPEED - KT	70	90	100	120	140	160
RATE OF DESCENT (2.8°) (ft/MIN)	347	446	495	594	693	792

DISTANCE TO THRESHOLD (NM)	3.5	3	2	1
ALTITUDE (ft)	1100	960	670	370

- 1. AUTHORIZATION REQUIRED
- 2. GNSS REQUIRED
- 3. RF REQUIRED
- 4. APPROACH NOT AUTHORIZED WHEN AIRPORT TEMPERATURE BELOW 19°C OR ABOVE 40°C
- 5. WMKA ALTIMETER SETTING REQUIRED.
- 6. PAPI AND VERTICAL PATH ANGLE NOT COINCIDENT
- 7. PROCEDURE REQUIRES RNP 0.3 FROM IAFS TO KA504
- 8. TOGA TO NAV REQUIRED
- 9. CLIMB GRADIENT OF 3.4% TO 3500 FT REQUIRED TO REACH BIDAL

CHANGES : FREQUENCY 258.2 MHz WITHDRAWN