

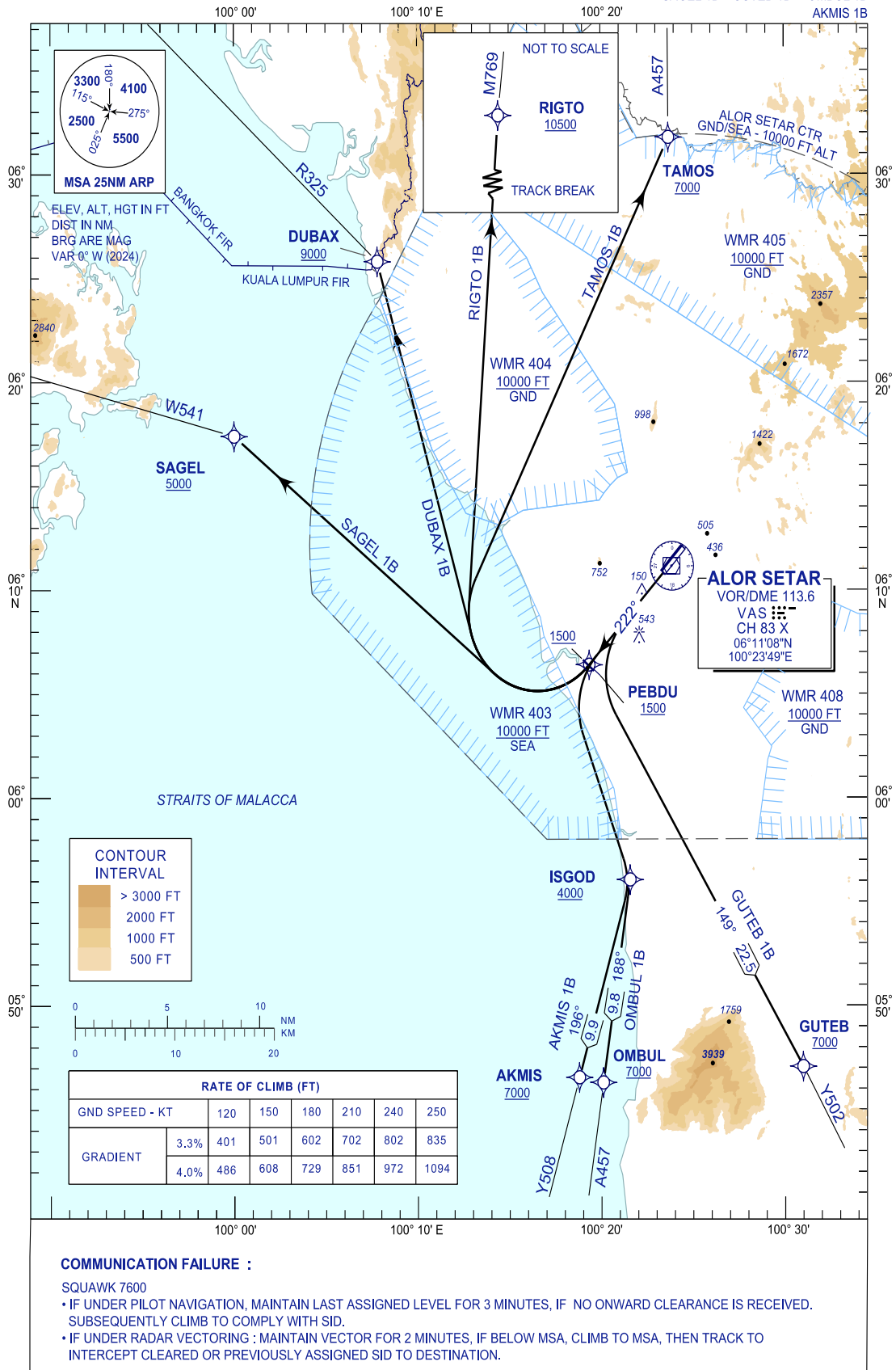
**STANDARD DEPARTURE CHART
INSTRUMENT (SID) - ICAO**

TRANSITION ALTITUDE
11000 FT

TWR/APP	122.3
	121.5
TRAINING	129.1
SMC	121.6
ATIS	128.65

**ALOR SETAR/
SULTAN ABDUL HALIM (WMKA)
RNAV (GNSS) RWY22**

TAMOS 1B RIGTO 1B DUBAX 1B
SAGEL 1B GUTEB 1B OMBUL 1B
AKMIS 1B



CONTOUR INTERVAL

> 3000 FT
2000 FT
1000 FT
500 FT

RATE OF CLIMB (FT)

GND SPEED - KT	120	150	180	210	240	250	
GRADIENT	3.3%	401	501	602	702	802	835
	4.0%	486	608	729	851	972	1094

COMMUNICATION FAILURE :

SQUAWK 7600

- IF UNDER PILOT NAVIGATION, MAINTAIN LAST ASSIGNED LEVEL FOR 3 MINUTES, IF NO ONWARD CLEARANCE IS RECEIVED. SUBSEQUENTLY CLIMB TO COMPLY WITH SID.
- IF UNDER RADAR VECTORED : MAINTAIN VECTOR FOR 2 MINUTES, IF BELOW MSA, CLIMB TO MSA, THEN TRACK TO INTERCEPT CLEARED OR PREVIOUSLY ASSIGNED SID TO DESTINATION.

CHANGES : FREQUENCY 258.2 MHz WITHDRAWN