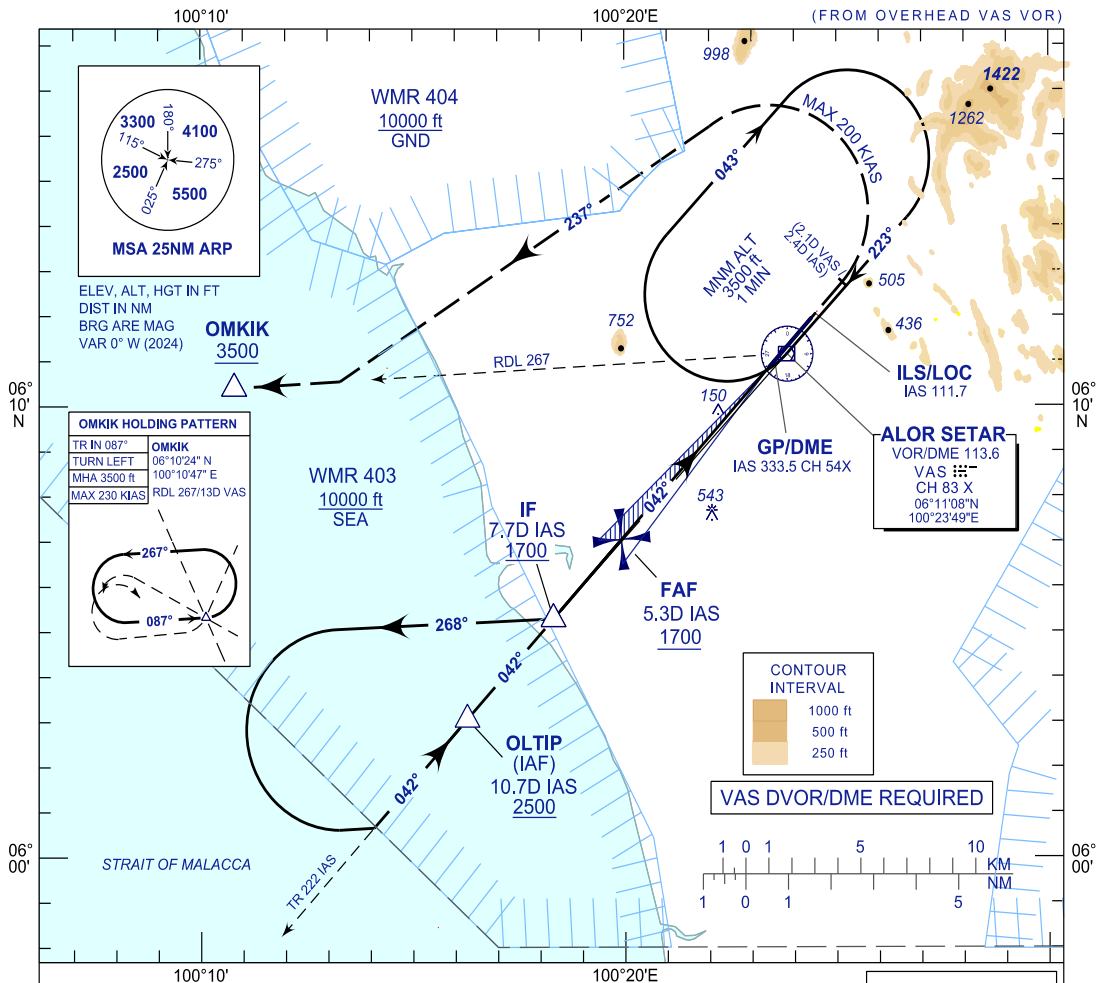


INSTRUMENT APPROACH CHART - ICAO **AERODROME ELEV 14 FT**
 HEIGHTS RELATED TO THR RWY 04 - ELEV 12 FT

TWR/APP 122.3
SMC 121.5
ATIS 128.65

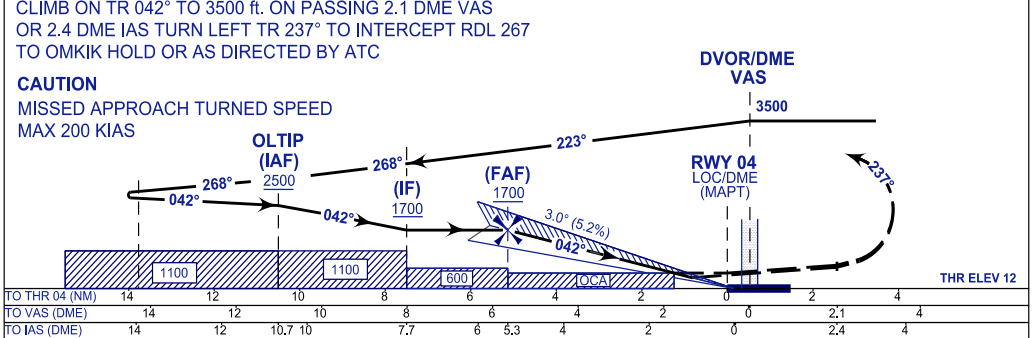
ALOR SETAR/ SULTAN ABDUL HALIM (WMKA)
ILS Y OR LOC Y RWY 04



MISSED APPROACH
 CLIMB ON TR 042° TO 3500 ft. ON PASSING 2.1 DME VAS OR 2.4 DME IAS TURN LEFT TR 237° TO INTERCEPT RDL 267 TO OMKIK HOLD OR AS DIRECTED BY ATC

CAUTION
 MISSED APPROACH TURNED SPEED MAX 200 KIAS

DVOR/DME VAS 3500
ILS RDH 50 ft



OCA (OCH)	A	B	C	D
ILS/DME (CAT I)	347 (335)	359 (347)	366 (354)	376 (364)
LOC/DME	530 (518)			

	DIST IAS DME	NM	5.3	5.0	4.0	3.0	2.0	1.3
DIST THR/RWY 04	NM	5.1	4.8	3.8	2.8	1.8	1.1	
ALTITUDE	FT	1700	1605	1286	968	649	426	

GS	KT	80	100	120	140	160	180
FAF - RWY04 (5.1NM)	MIN:SEC	3:52	3:06	2:35	2:13	1:56	1:43
RATE OF DESCEND (318.6 FT/NM)	FT/MIN	420	530	630	740	840	950

CHANGES : FREQUENCY 258.2 MHz WITHDRAWN