

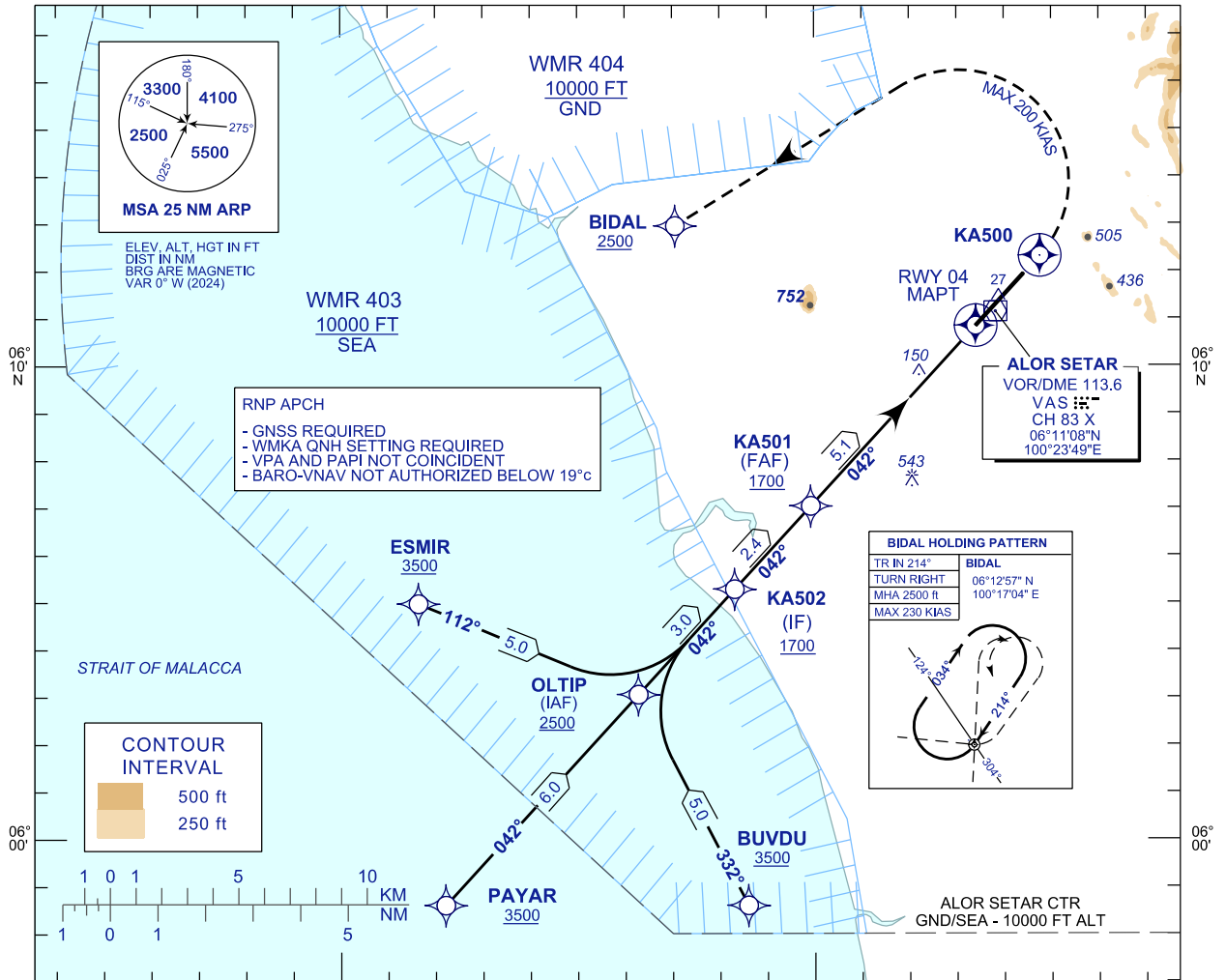
**INSTRUMENT  
APPROACH  
CHART - ICAO**

**AERODROME ELEV 14 FT**  
HEIGHT RELATED TO  
THR RWY 04 - ELEV 12 FT

TWR/APP	122.3
SMC	121.5
ATIS	128.65

**ALOR SETAR/  
SULTAN ABDUL HALIM (WMKA)**

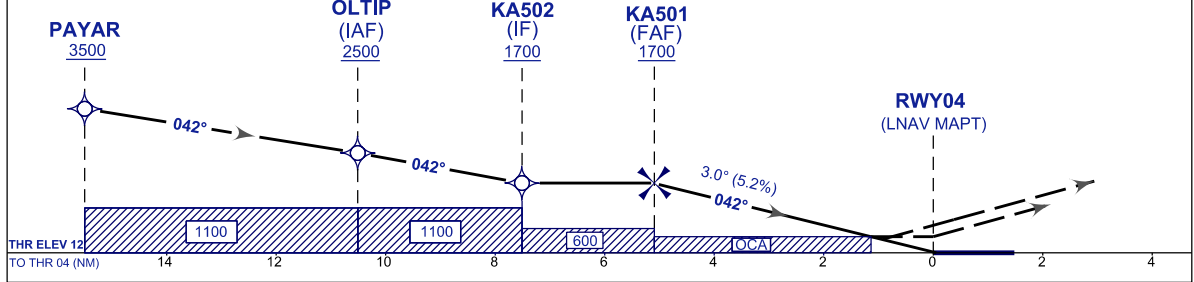
RNP Y RWY 04



**MISSED APPROACH**  
CLIMB ON TR 042° TO 2500 ft. ON PASSING KA500  
TURN LEFT DIRECT TO BIDAL AND HOLD OR  
AS DIRECTED BY ATC

**CAUTION**  
MISSED APPROACH TURNED SPEED  
MAX 200 KIAS

TRANSITION ALT 11000  
RDH 50 ft



OCA (OCH)	A	B	C	D
LNAV	400 (388)			
LNAV / VNAV	337 (325)	349 (337)	368 (356)	392 (380)

DIST THR/RWY 04	NM	5.1	5.0	4.0	3.0	2.0	1.0
ALTITUDE	ft	1700	1655	1251	954	657	360

GS	KT	80	100	120	140	160	180
FAF - RWY04 (5.1NM)	MIN:SEC	3:52	3:06	2:35	2:13	1:56	1:43
RATE OF DESCEND (318.4 FT/NM)	FT/MIN	420	530	630	740	840	950

CHANGES : FREQUENCY 258.2 MHz WITHDRAWN