

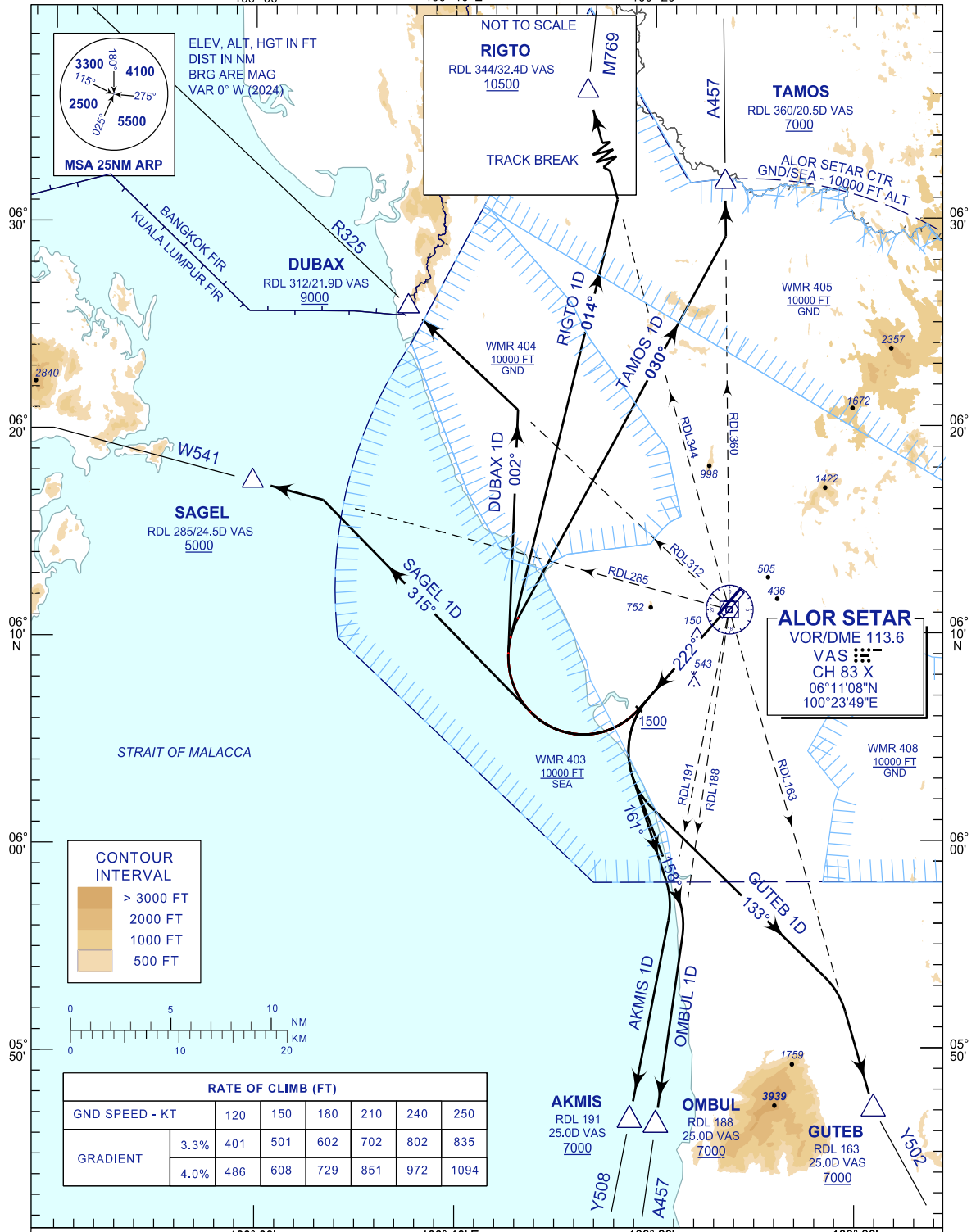
**STANDARD DEPARTURE CHART
INSTRUMENT (SID) - ICAO**

TRANSITION ALTITUDE
11000 FT

TWR/APP	122.3
	121.5
TRAINING	129.1
SMC	121.6
ATIS	128.65

**ALOR SETAR/
SULTAN ABDUL HALIM (WMKA)**
RWY 22

TAMOS 1D	RIGTO 1D	DUBAX 1D
SAGEL 1D	GUTEB 1D	OMBUL 1D
		AKMIS 1D



COMMUNICATION FAILURE :

- SQUAWK 7600
- IF UNDER PILOT NAVIGATION, MAINTAIN LAST ASSIGNED LEVEL FOR 3 MINUTES, IF NO ONWARD CLEARANCE IS RECEIVED. SUBSEQUENTLY CLIMB TO COMPLY WITH SID.
- IF UNDER RADAR VECTORED : MAINTAIN VECTOR FOR 2 MINUTES, IF BELOW MSA, CLIMB TO MSA, THEN TRACK TO INTERCEPT CLEARED OR PREVIOUSLY ASSIGNED SID TO DESTINATION.

CHANGES : FREQUENCY 258.2 MHz WITHDRAWN