

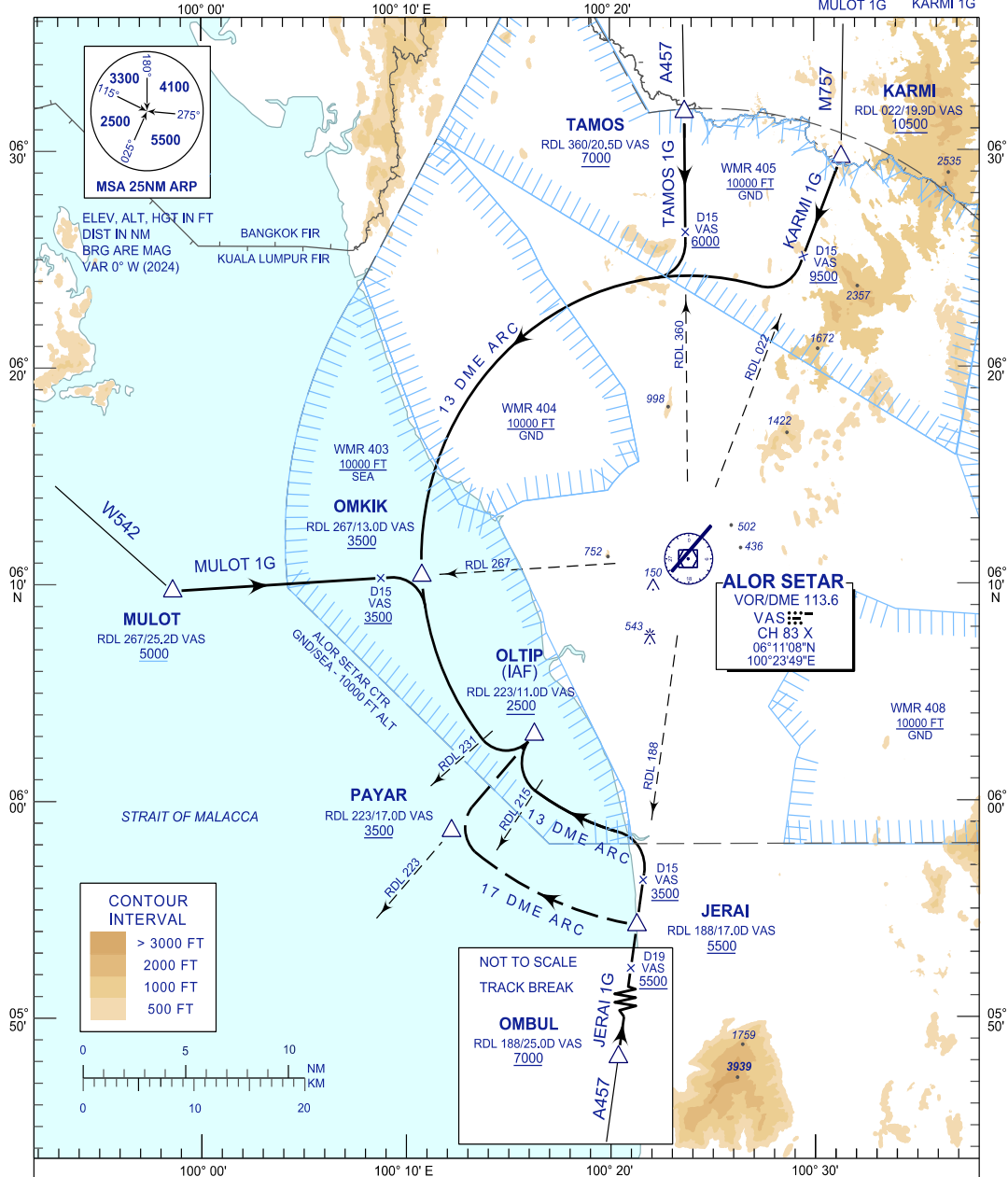
**STANDARD ARRIVAL CHART
INSTRUMENT (STAR) - ICAO**

TRANSITION ALTITUDE
11000 FT

TWR/APP 122.3
121.5
TRAINING 129.1
SMC 121.6
ATIS 128.65

**ALOR SETAR/
SULTAN ABDUL HALIM (WMKA)
VOR/DME ARC RWY 04**

JERAI 1G TAMOS 1G
MULOT 1G KARMI 1G



COMMUNICATION FAILURE :

- SQUAWK 7600
- IF UNDER PILOT NAVIGATION, MAINTAIN LAST ASSIGNED LEVEL FOR 3 MINUTES, IF NO ONWARD CLEARANCE IS RECEIVED. SUBSEQUENTLY CLIMB/DESCEND TO COMPLY WITH STAR AND LAND.
- IF UNDER RADAR VECTORING : MAINTAIN VECTOR FOR 1 MINUTES, IF BELOW MSA, CLIMB TO MSA, THEN TRACK TO INTERCEPT CLEARED OR PREVIOUSLY ASSIGNED STAR AND LAND.

DESIGNATOR	STAR DESCRIPTION
JERAI 1 GOLF	ARRIVAL VIA A457 TO OMBUL AND JERAI THEN TRACK INBOUND ON RDL 188 VAS VOR. AT D15 VAS TURN LEFT TO JOIN 13 DME ARC VAS VOR FOR ILS Z OR LOC Z OR RNAV(GNSS) Y RWY 04 NOTE : ALTERNATIVE 17 DME ARC VAS VOR AS INSTRUCTED BY ATC
MULOT 1 GOLF	ARRIVAL VIA W542 TO MULOT THEN TRACK INBOUND ON RDL 267 VAS VOR. AT D15 VAS TURN RIGHT TO JOIN 13 DME ARC VAS VOR FOR ILS Z OR LOC Z OR RNAV(GNSS) Y RWY 04
TAMOS 1 GOLF	ARRIVAL VIA A457 TO TAMOS THEN TRACK INBOUND ON RDL 360 VAS VOR. AT D15 VAS TURN RIGHT TO JOIN 13 DME ARC VAS VOR FOR ILS Z OR LOC Z OR RNAV(GNSS) Y RWY 04
KARMI 1 GOLF	ARRIVAL VIA M757 TO KARMI THEN TRACK INBOUND ON RDL 022 VAS VOR. AT D15 VAS TURN RIGHT TO JOIN 13 DME ARC VAS VOR FOR ILS Z OR LOC Z OR RNAV(GNSS) Y RWY 04

CHANGES : FREQUENCY 258.2 MHz WITHDRAWN