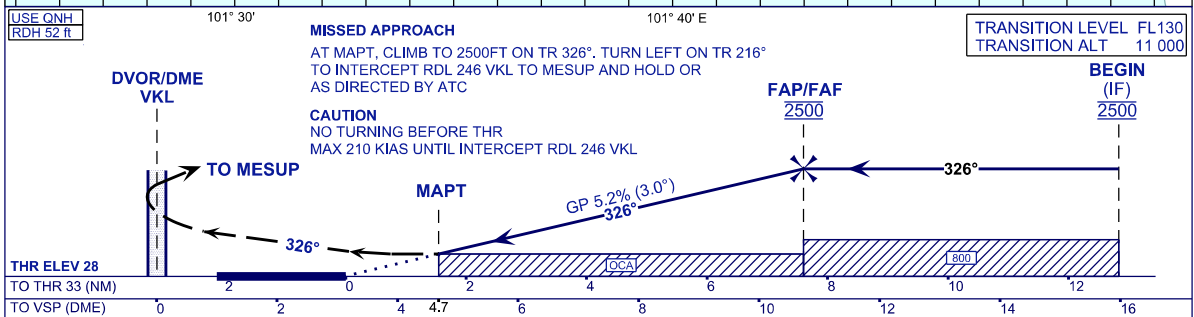
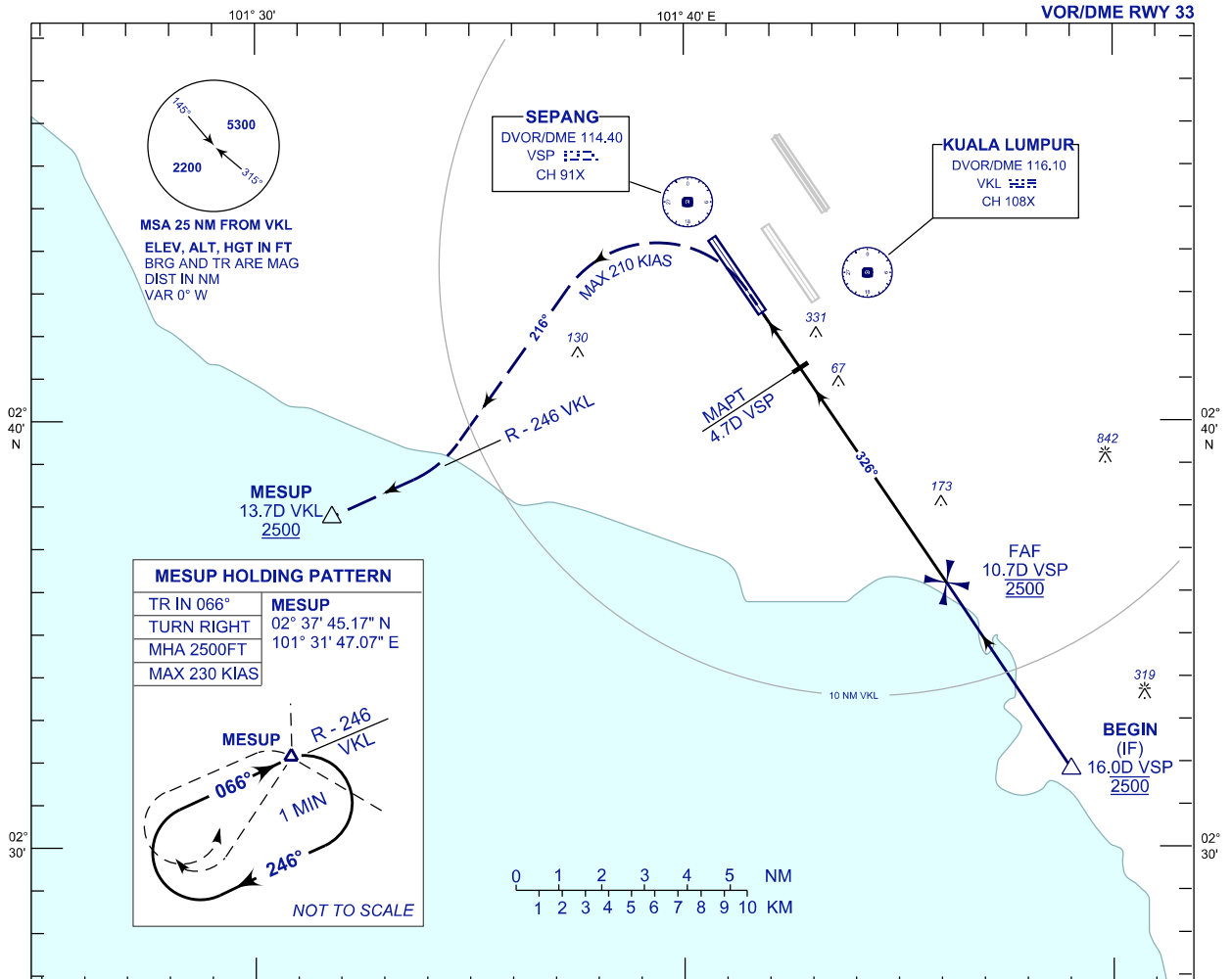


**INSTRUMENT
APPROACH
CHART - ICAO**

AERODROME ELEV 69 ft
HEIGHT RELATED TO
THR RWY 33 - ELEV 28 ft

APP 125.85	TWR 119.80	SMC 118.05	D-ATIS ID-WMCK 128.05
---------------	---------------	---------------	-----------------------------

**SEPANG/KL INTERNATIONAL
AIRPORT (WMCK)**



OCA (OCH)	A	B	C	D
VOR / DME	570 (542)			

GROUND SPEED (GS)	KT	80	100	120	140	160	180
FAF - MAPT (6.1 NM)	MIN:SEC	4:33	3:38	3:02	2:36	2:16	2:01
RATE OF DESCEND (318.4 FT/NM)	FT/MIN	420	530	640	740	850	950

DIST VSP (DME)	NM	10.7	9.7	8.7	7.7	6.7	5.7	4.7	3.7
DIST THR/RWY33	NM	7.6	6.6	5.6	4.6	3.6	2.6	1.6	0.6
ALTITUDE	FT	2500	2181	1863	1545	1226	908	590	272

CHANGES : FREQUENCY ATIS TO D-ATIS ID-WMCK.