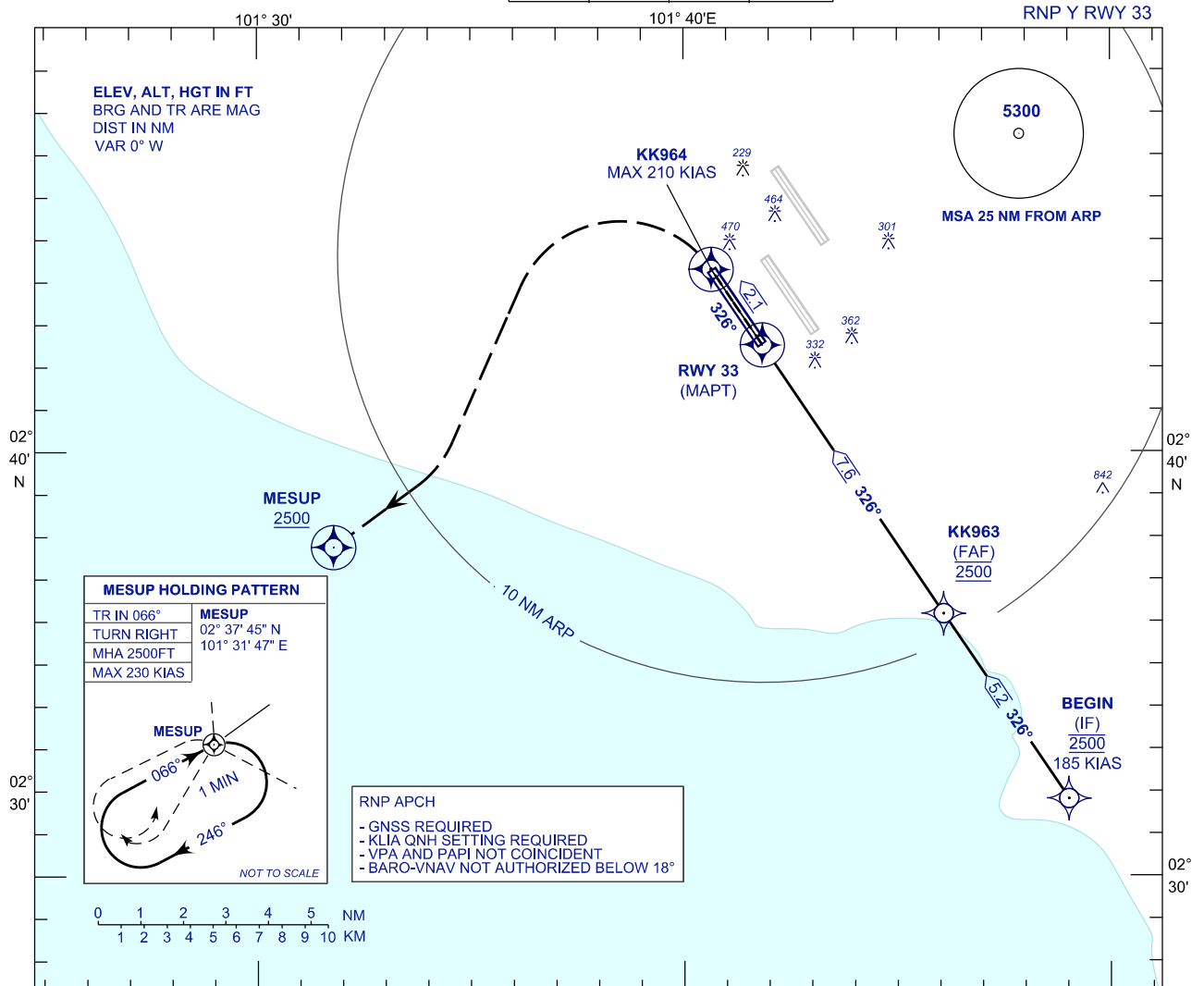


**INSTRUMENT  
APPROACH  
CHART - ICAO**

**AERODROME ELEV 69 ft**  
HEIGHT RELATED TO  
THR RWY 33 - ELEV 28 ft

APP	TWR	SMC	D-ATIS ID-WMCK
119.45	119.80	118.050	128.05
125.85			
125.10			

**SEPANG/KL INTERNATIONAL  
AIRPORT (WMCK)**



**MESUP HOLDING PATTERN**

TR IN 066°	MESUP
TURN RIGHT	02° 37' 45" N
MHA 2500FT	101° 31' 47" E
MAX 230 KIAS	

NOT TO SCALE

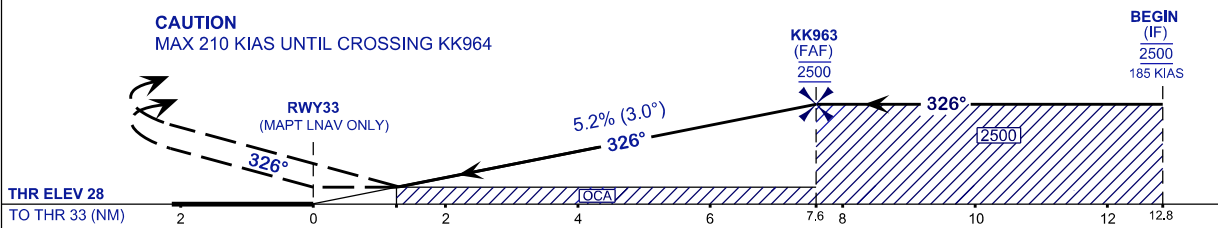
- RNP APCH**
- GNSS REQUIRED
  - KLIA QNH SETTING REQUIRED
  - VPA AND PAPI NOT COINCIDENT
  - BARO-VNAV NOT AUTHORIZED BELOW 18°

VPA 3.0°  
TCH 52 ft

**MISSED APPROACH**  
AT MAPT MAINTAIN TR326 TO KK964 CLIMB TO 2500FT. AT KK964 TURN LEFT TO MESUP AND HOLD OR AS DIRECTED BY ATC

TRANSITION LEVEL FL130  
TRANSITION ALT 11 000

**CAUTION**  
MAX 210 KIAS UNTIL CROSSING KK964



STRAIGHT-IN APPROACH	OCA (OCH)				GROUND SPEED (GS)	KNOTS	80	100	120	140	160	180		
CATEGORY OF AIRCRAFT	A	B	C	D	FAF - RWY33 (7.6 NM)	MIN:SEC	5:42	4:34	3:48	3:16	2:51	2:32		
LNAV / VNAV	500 (472)				RATE OF DESCENT (318.5 FT/NM)	FT/MIN	420	530	630	740	840	950		
LNAV	500 (472)				DIST THR / RWY33	NM	7.6	6.6	5.6	4.6	3.6	2.6	1.6	0.6
					ALTITUDE	FT	2500	2182	1864	1545	1227	909	590	271

CHANGES : FREQUENCY ATIS TO D-ATIS ID-WMCK.