

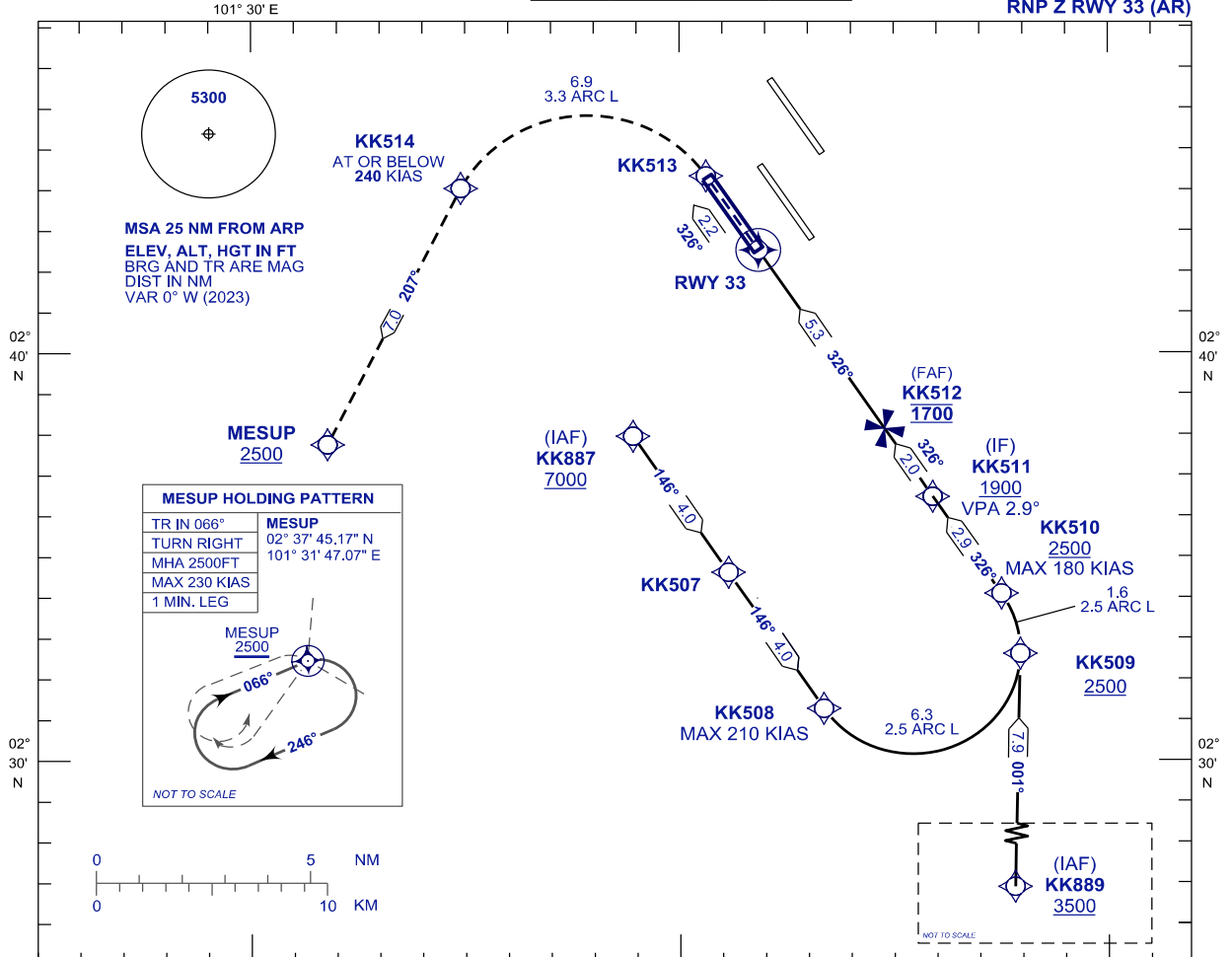
**INSTRUMENT
APPROACH
CHART - ICAO**

AERODROME ELEV 69 ft
HEIGHT RELATED TO
THR RWY 33 - ELEV 28 ft

APP 119.45 125.85 125.10	TWR 119.80	SMC 118.05	D-ATIS ID-WMCK 128.05
-----------------------------------	---------------	---------------	-----------------------------

**SEPANG/KL INTERNATIONAL
AIRPORT (WMCK)**

RNP Z RWY 33 (AR)

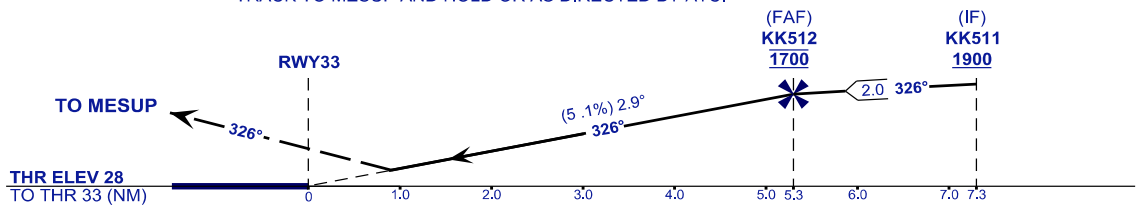


VPA 2.9°
RDH 52 ft

MISSED APPROACH

CLIMB TO 2500 FT OR ABOVE VIA RNP (AR) MISSED APPROACH,
TRACK TO MESUP AND HOLD OR AS DIRECTED BY ATC.

TRANSITION LEVEL FL130
TRANSITION ALT 11000 ft



STRAIGHT-IN APPROACH	OCA (OCH)	
CATEGORY OF AIRCRAFT	C	D
RNP (0.30)	530 (502)	
CIRCLING AND ALTERNATE N/A		

AUTHORIZATION REQUIRED

NOTES

- 1) GNSS REQUIRED.
- 2) RF REQUIRED.
- 3) APPROACH NOT AUTHORIZED WHEN AIRPORT TEMPERATURE BELOW 18°C OR ABOVE 40°C.
- 4) WMCK ALTIMETER SETTING REQUIRED.
- 5) PAPI AND VERTICAL PATH ANGLE NOT COINCIDENT.
- 6) RNP 0.30 FROM KK887 & KK889 TO THRESHOLD.
- 7) RNP 0.50 FROM RWY33 TO KK513.

DISTANCE IN NM. BEARING ARE MAGNETIC.
ELEVATION IN FEET AMSL.

CHANGES : FREQUENCY ATIS TO D-ATIS ID-WMCK.