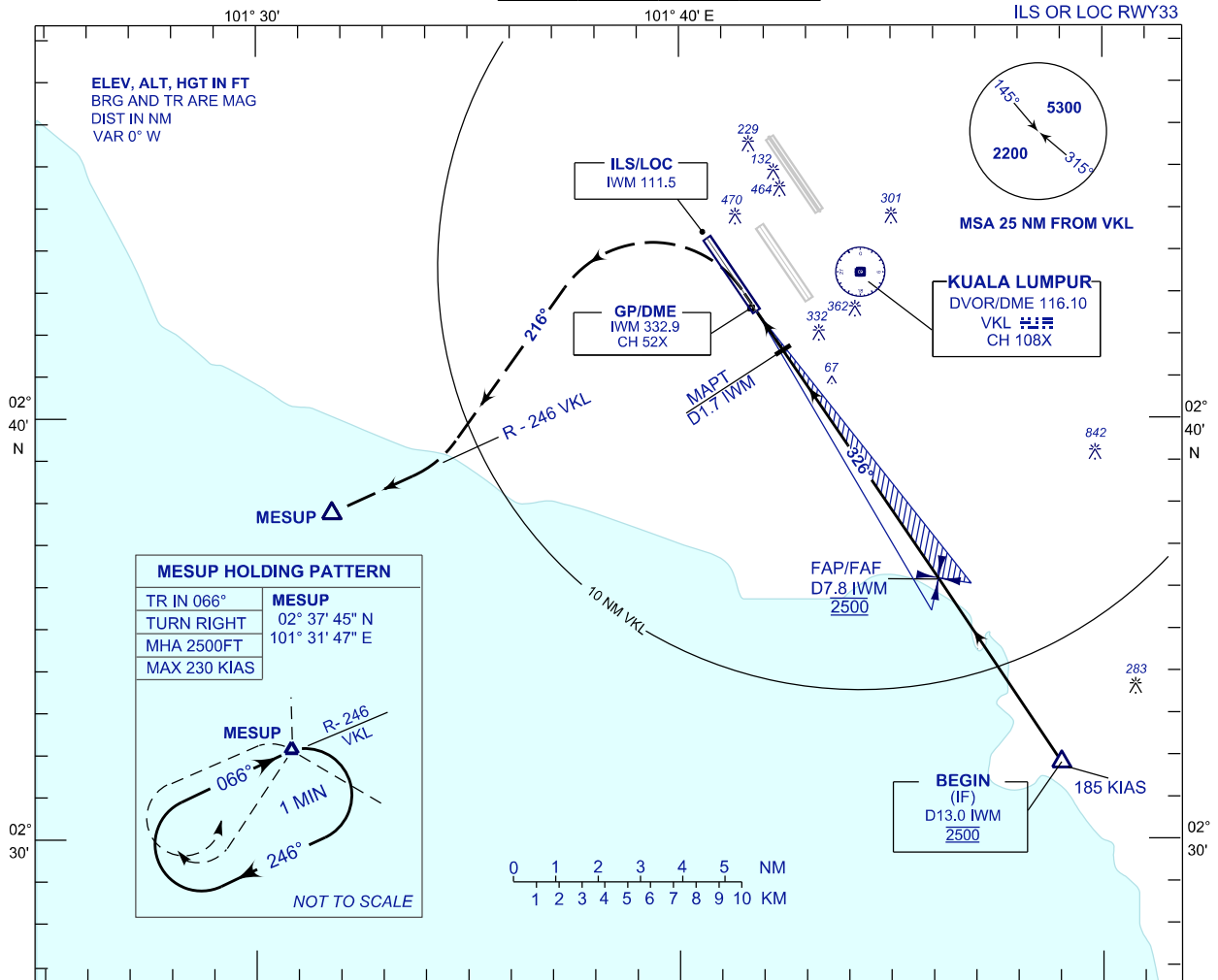


INSTRUMENT APPROACH CHART - ICAO

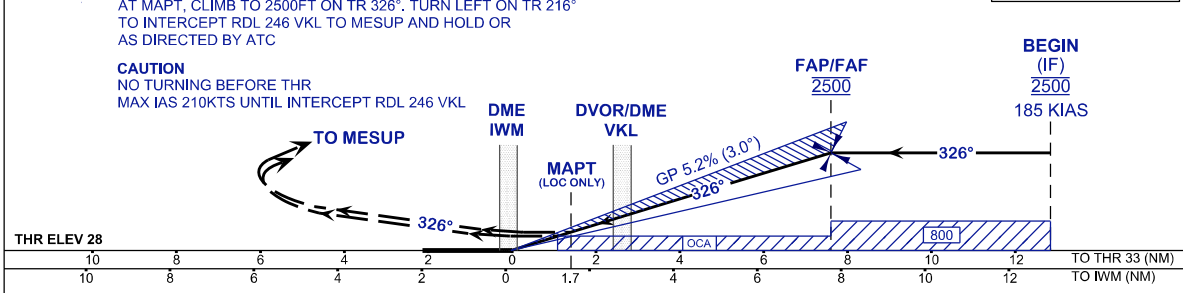
AERODROME ELEV 69 ft
HEIGHT RELATED TO THR RWY 33 - ELEV 28 ft

APP	TWR	SMC	D-ATIS ID-WMKK
125.85	119.80	118.05	128.05
119.45			
125.10			

SEPANG/KL INTERNATIONAL AIRPORT (WMKK)



USE QNH ILS RDH 52 ft MISSED APPROACH AT MAPT, CLIMB TO 2500FT ON TR 326°. TURN LEFT ON TR 216° TO INTERCEPT RDL 246 VKL TO MESUP AND HOLD OR AS DIRECTED BY ATC CAUTION NO TURNING BEFORE THR MAX IAS 210KTS UNTIL INTERCEPT RDL 246 VKL



OCA (OCH)	A	B	C	D	GROUND SPEED (GS)	KT	80	100	120	140	160	180
ILS/DME CAT I	424 (396)				FAP - RWY33 (7.6 NM)	MIN:SEC	5:43	4:34	3:49	3:16	2:52	2:33
LOC/DME (GP INOP)	500 (472)				RATE OF DESCEND (318.4 FT/NM)	FT/MIN	420	530	630	740	840	950

DIST IWM DME	NM	7.8	6.8	5.8	4.8	3.8	2.8	1.8	0.8
DIST THR/RWY33	NM	7.6	6.6	5.6	4.6	3.6	2.6	1.6	0.6
ALTITUDE	FT	2500	2180	1862	1543	1225	907	588	270

CHANGES : FREQUENCY ATIS TO D-ATIS ID-WMKK.