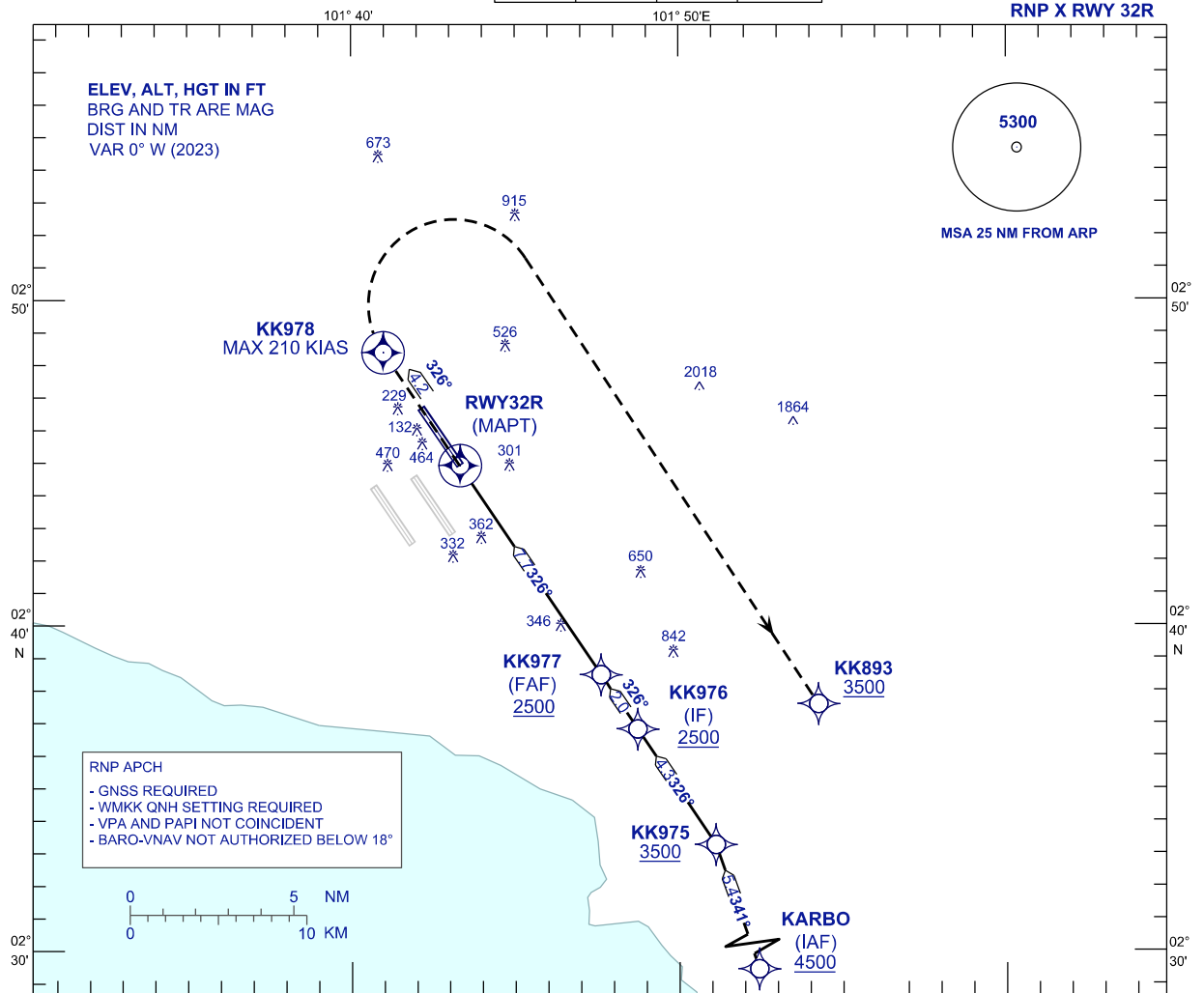


**INSTRUMENT
APPROACH
CHART - ICAO**

AERODROME ELEV 69 ft
HEIGHT RELATED TO
THR RWY 32R - ELEV 69 ft

APP	TWR	SMC	D-ATIS ID-WMCK
121.25 120.35 135.75	118.80	121.65	128.05

**SEPANG/KL INTERNATIONAL
AIRPORT (WMCK)**



VPA 2.9°
TCH 56 ft

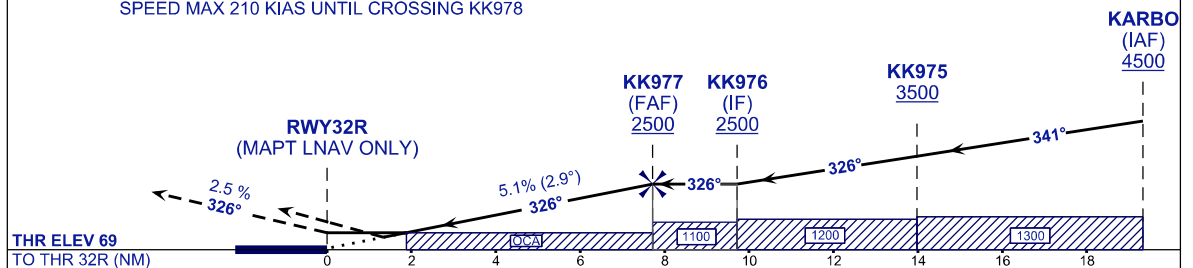
MISSED APPROACH

AT MAPT TR326 TO KK978 CLIMB TO 3500FT OR ABOVE. AT KK978 TURN RIGHT TO KK893 OR AS DIRECTED BY ATC.

TRANSITION LEVEL FL130
TRANSITION ALT 11 000

CAUTION

SPEED MAX 210 KIAS UNTIL CROSSING KK978



STRAIGHT-IN APPROACH	OCA (OCH)			
CATEGORY OF AIRCRAFT	A	B	C	D
LNAV / VNAV	601 (532)			
LNAV	700 (631)			

GROUND SPEED (GS)	KNOTS	80	100	120	140	160	180
FAF - RWY32R (7.7 NM)	MIN:SEC	5:47	4:38	3:51	3:18	2:54	2:34
RATE OF DESCENT (5.1% / 2.9°)	FT/MIN	410	510	620	720	820	920

DIST THR / RWY32R	NM	7.7	7.0	6.0	5.0	4.0	3.0	2.0	1.0
ALTITUDE	FT	2500	2280	1972	1665	1357	1049	741	433

CHANGES : FREQUENCY ATIS TO D-ATIS ID-WMCK.