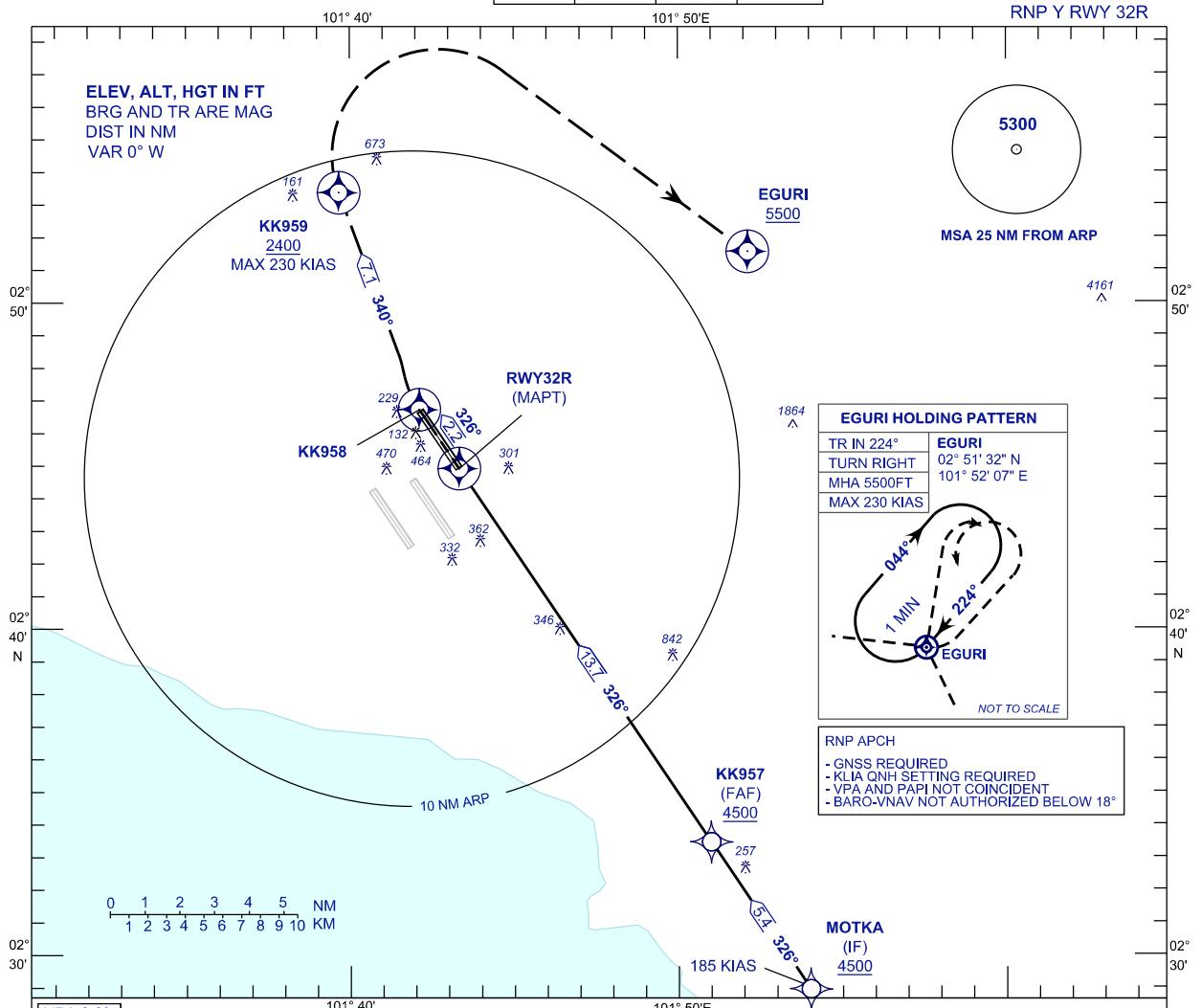


**INSTRUMENT
APPROACH
CHART - ICAO**

AERODROME ELEV 69 ft
HEIGHT RELATED TO
THR RWY 32R - ELEV 69 ft

APP	TWR	SMC	D-ATIS ID-WMCK
121.25 120.35 135.75	118.80	121.65	128.05

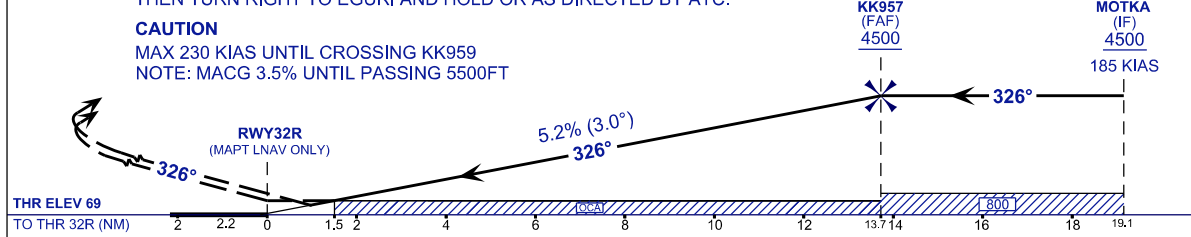
**SEPANG/KL INTERNATIONAL
AIRPORT (WMCK)**



MISSED APPROACH
AT MAPT TR326 TO KK958 CLIMB TO 5500FT. AT KK958 TURN RIGHT TO KK959 THEN TURN RIGHT TO EGURI AND HOLD OR AS DIRECTED BY ATC.

CAUTION
MAX 230 KIAS UNTIL CROSSING KK959
NOTE: MACG 3.5% UNTIL PASSING 5500FT

TRANSITION LEVEL FL130
TRANSITION ALT 11 000



STRAIGHT-IN APPROACH	OCA (OCH)				GROUND SPEED (GS)		KNOTS							
	A	B	C	D	FAF - RWY32R (13.7 NM)	MIN:SEC	80	100	120	140	160	180		
CATEGORY OF AIRCRAFT							10:19	8:15	6:53	5:54	5:10	4:35		
LNAV / VNAV	3.5% MACG	430 (361)			RATE OF DESCENT (318.5 FT/NM)	FT/MIN	420	530	630	740	840	950		
	2.5% MACG	1210 (1141)					DIST THR / RWY32R	NM	13.7	12.7	11.7	10.7	9.7	8.7
LNAV	3.5% MACG	600 (531)			ALTITUDE	FT	4500	4183	3865	3546	3228	2910	2591	2273
	2.5% MACG	1590 (1521)			DIST THR / RWY32R	NM	5.7	4.7	3.7	2.7	1.7	0.7		
					ALTITUDE	FT	1954	1636	1317	999	680	362		

① MACG - MISSED APPROACH CLIMB GRADIENT
IF UNABLE TO MAINTAIN A 3.5% MACG, USE LNAV OR LNAV / VNAV 2.5% OCA

CHANGES : FREQUENCY ATIS TO D-ATIS ID-WMCK.