

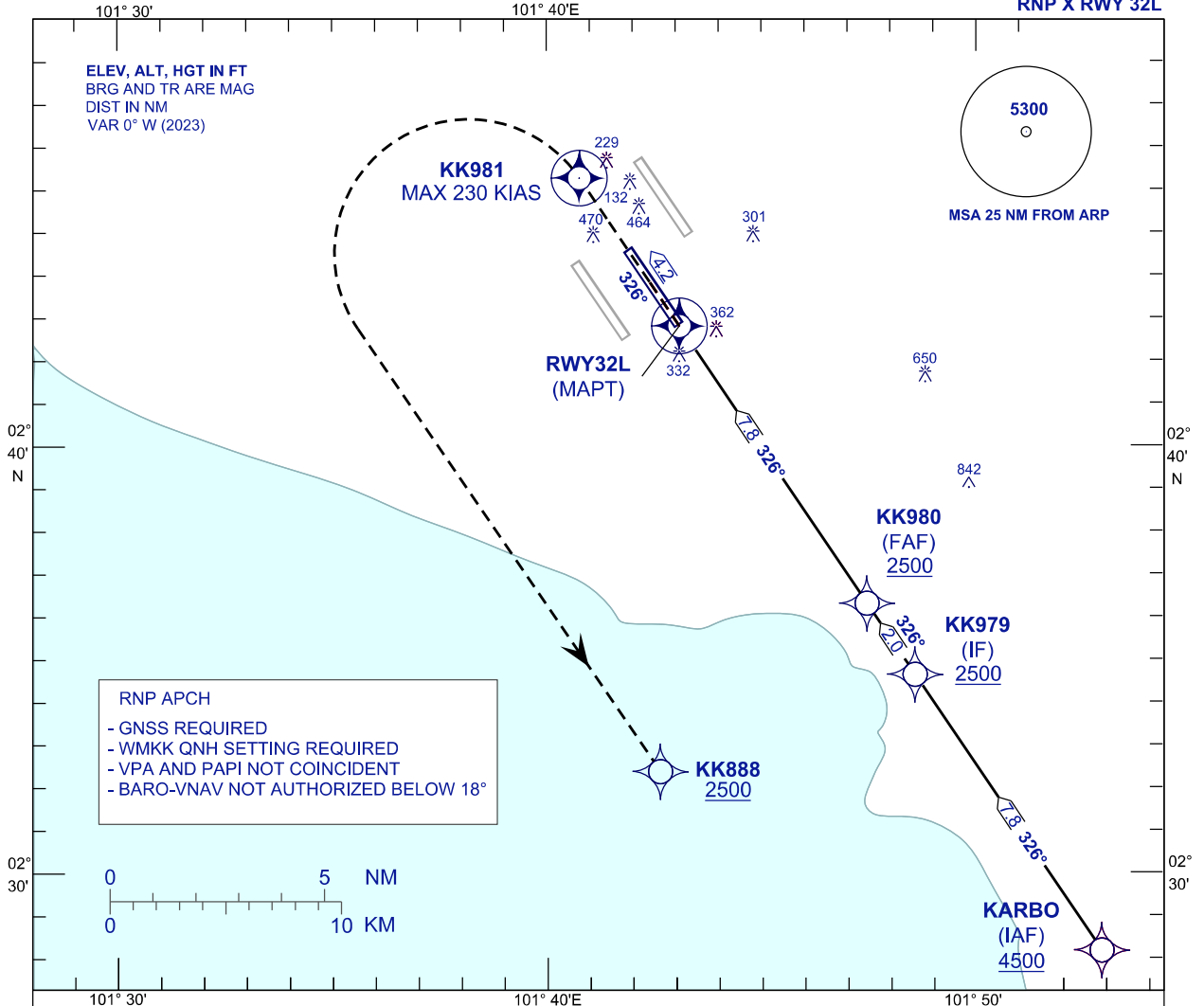
**INSTRUMENT  
APPROACH  
CHART - ICAO**

**AERODROME ELEV 69 ft**  
HEIGHT RELATED TO  
THR RWY 32L - ELEV 48 ft

APP 119.45 125.85 125.10	TWR 119.80	SMC 118.050	D-ATIS ID-WMKK 128.05
-----------------------------------	---------------	----------------	-----------------------------

**SEPANG/KL INTERNATIONAL  
AIRPORT (WMKK)**

RNP X RWY 32L

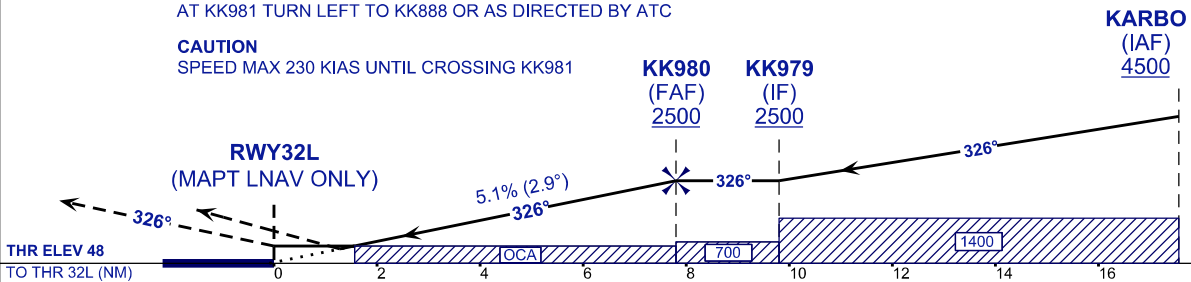


VPA 2.9°  
TCH 52 ft

**MISSED APPROACH**  
AT MAPT MAINTAIN TR326 TO KK981 CLIMB TO 2500FT OR ABOVE.  
AT KK981 TURN LEFT TO KK888 OR AS DIRECTED BY ATC

TRANSITION LEVEL FL130  
TRANSITION ALT 11 000

**CAUTION**  
SPEED MAX 230 KIAS UNTIL CROSSING KK981



STRAIGHT-IN APPROACH	OCA (OCH)			
CATEGORY OF AIRCRAFT	A	B	C	D
LNAV / VNAV	530 (482)			
LNAV	580 (532)			

GROUND SPEED (GS)	KNOTS	80	100	120	140	160	180
FAF - RWY32L (7.8 NM)	MIN:SEC	5:51	4:41	3:54	3:21	2:55	2:36
RATE OF DESCENT (5.1% / 2.9°)	FT/MIN	410	510	620	720	820	920

DIST THR / RWY32L	NM	7.8	7.0	6.0	5.0	4.0	3.0	2.0	1.0
ALTITUDE	FT	2500	2254	1947	1639	1331	1023	715	408

CHANGES : FREQUENCY ATIS TO D-ATIS ID-WMKK.