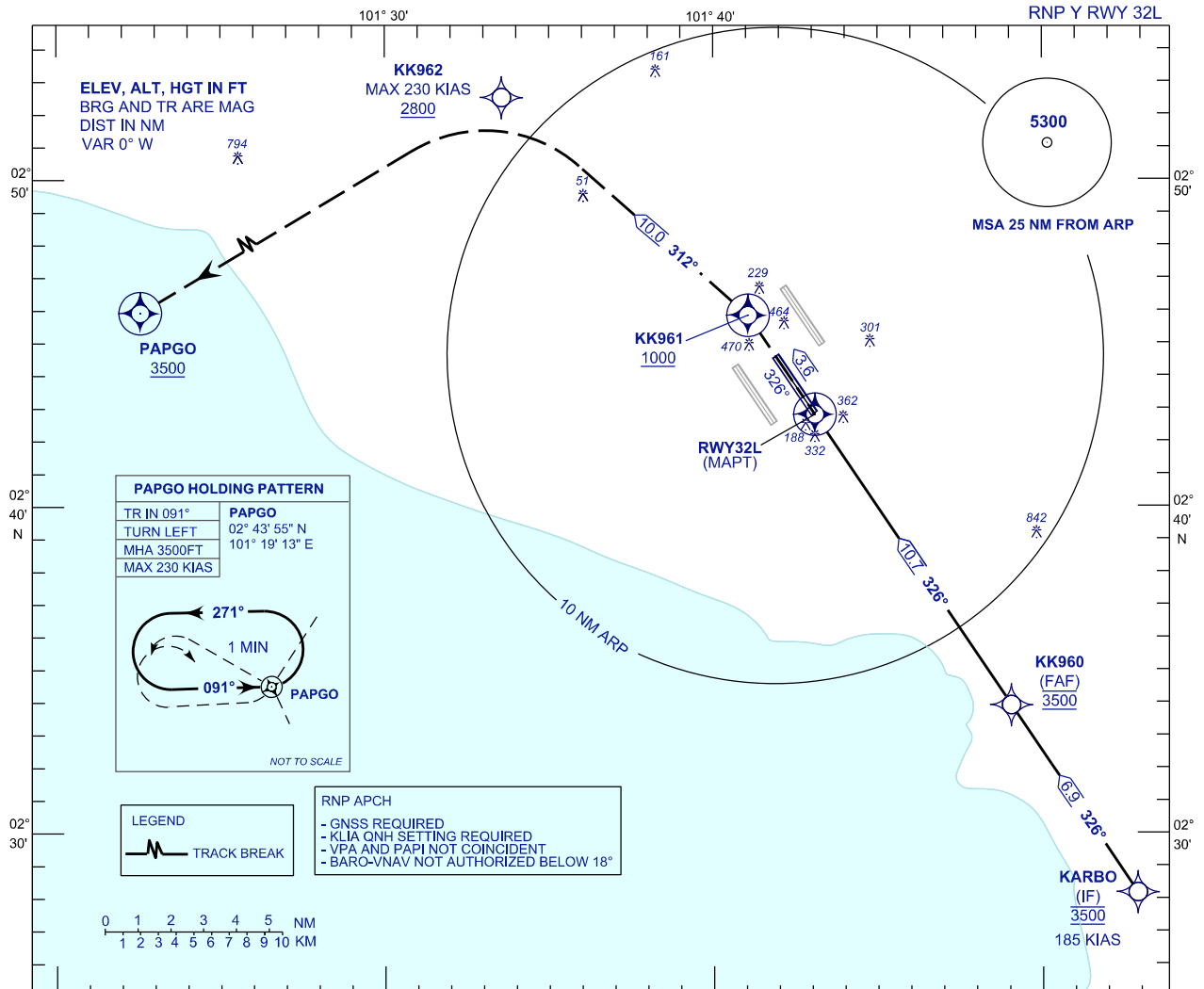


**INSTRUMENT
APPROACH
CHART - ICAO**

AERODROME ELEV 69 ft
HEIGHT RELATED TO
THR RWY 32L - ELEV 48 ft

APP	TWR	SMC	D-ATIS ID-WMCK
124.65 118.65 135.75	118.50	121.80 122.525	128.05

**SEPANG/KL INTERNATIONAL
AIRPORT (WMCK)**



PAPGO HOLDING PATTERN

TR IN 091°	PAPGO
TURN LEFT	02° 43' 55" N
MHA 3500FT	101° 19' 13" E
MAX 230 KIAS	

1 MIN

271°

091°

PAPGO

NOT TO SCALE

LEGEND

— TRACK BREAK

RNP APCH

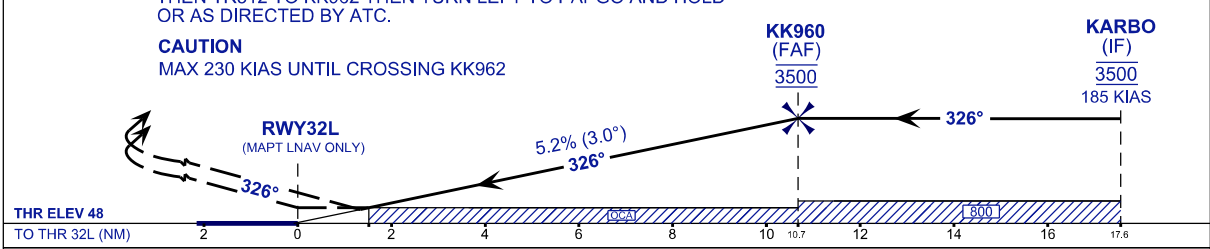
- GNSS REQUIRED
- KLIA QNH SETTING REQUIRED
- VPA AND PAPI NOT COINCIDENT
- BARO-VNAV NOT AUTHORIZED BELOW 18°

VPA 3.0°
TCH 52 ft

MISSED APPROACH
AT MAPT, TR326 TO KK961 CLIMB TO 3500FT.
THEN TR312 TO KK962 THEN TURN LEFT TO PAPGO AND HOLD
OR AS DIRECTED BY ATC.

CAUTION
MAX 230 KIAS UNTIL CROSSING KK962

TRANSITION LEVEL FL130
TRANSITION ALT 11 000



STRAIGHT-IN APPROACH	OCA (OCH)				GROUND SPEED (GS)		KNOTS		80	100	120	140	160	180	
CATEGORY OF AIRCRAFT	A	B	C	D	FAF - RWY32L (10.7 NM)		MIN:SEC		8:01	6:25	5:21	4:35	4:01	3:34	
RNAV / VNAV	530 (482)				RATE OF DESCENT (318.5 FT/NM)		FT/MIN		420	530	630	740	840	950	
RNAV	580 (532)				DIST THR / RWY32L		NM	10.7	9.7	8.7	7.7	6.7	5.7	4.7	3.7
	DIST THR / RWY32L		NM		ALTITUDE		FT	3500	3183	2864	2546	2228	1909	1591	1272
	DIST THR / RWY32L		NM		ALTITUDE		FT	954	635	317					

CHANGES : FREQUENCY ATIS TO D-ATIS ID-WMCK.