

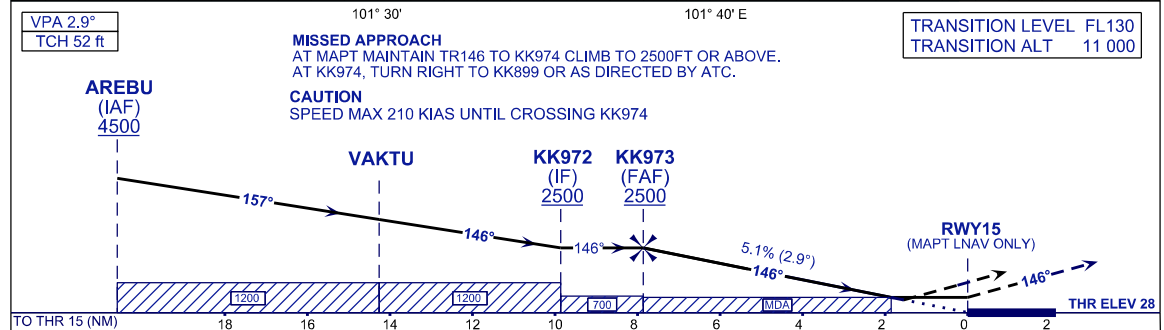
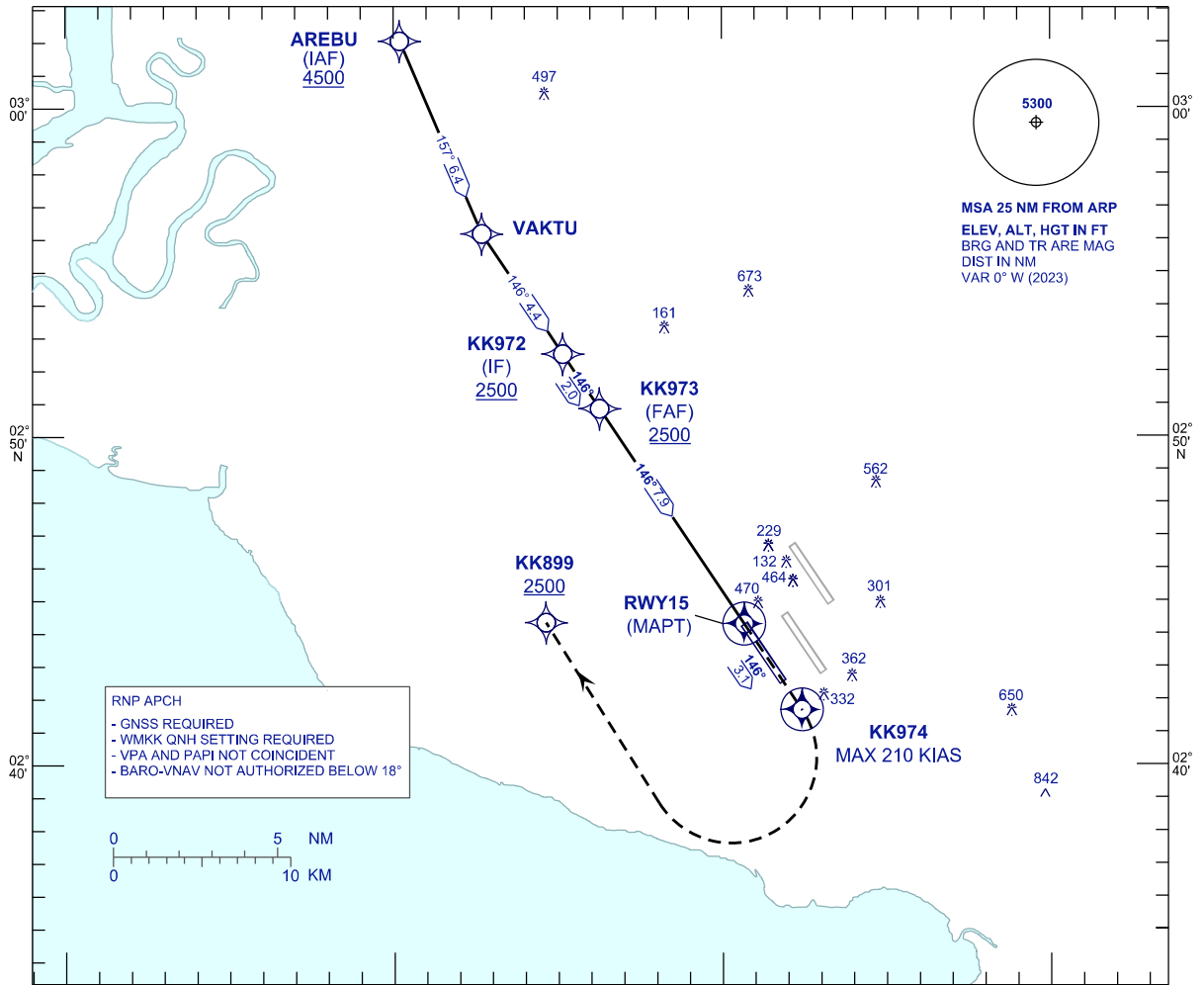
**INSTRUMENT
APPROACH
CHART - ICAO**

AERODROME ELEV 69 ft
HEIGHT RELATED TO
THR RWY 15 - ELEV 28 ft

APP	TWR	SMC	D-ATIS ID-WMKK
124.20	119.80	118.05	128.05
119.45			
125.10			

**SEPANG/KL INTERNATIONAL
AIRPORT (WMKK)**

RNP X RWY 15



VPA 2.9°	MISSED APPROACH				TRANSITION LEVEL FL130											
TCH 52 ft	AT MAPT MAINTAIN TR146 TO KK974 CLIMB TO 2500FT OR ABOVE.				TRANSITION ALT 11 000											
	AT KK974, TURN RIGHT TO KK899 OR AS DIRECTED BY ATC.															
	CAUTION															
	SPEED MAX 210 KIAS UNTIL CROSSING KK974															
AREBU (IAF) 4500	VAKTU				KK972 (IF) 2500	KK973 (FAF) 2500	RWY15 (MAPT LNAV ONLY)									
TO THR 15 (NM)																
18 16 14 12 10 8 6 4 2 0 2																
STRAIGHT-IN APPROACH		OCA (OCH)				GROUND SPEED (GS)		KT								
CATEGORY OF AIRCRAFT		A	B	C	D	FAF - RWY15 (7.9 NM)		MIN:SEC	5:54	4:43	3:56	3:22	2:57	2:37		
LNAV / VNAV		556 (528)				RATE OF DESCEND (5.1% / 2.9°)		FT/MIN	410	510	620	720	820	920		
LNAV		650 (622)				DIST THR/RWY15		NM	7.9	7.0	6.0	5.0	4.0	3.0	2.0	1.0
		ALTITUDE		FT		2500	2235	1972	1620	1312	1004	696	388			

CHANGES : FREQUENCY ATIS TO D-ATIS ID-WMKK.