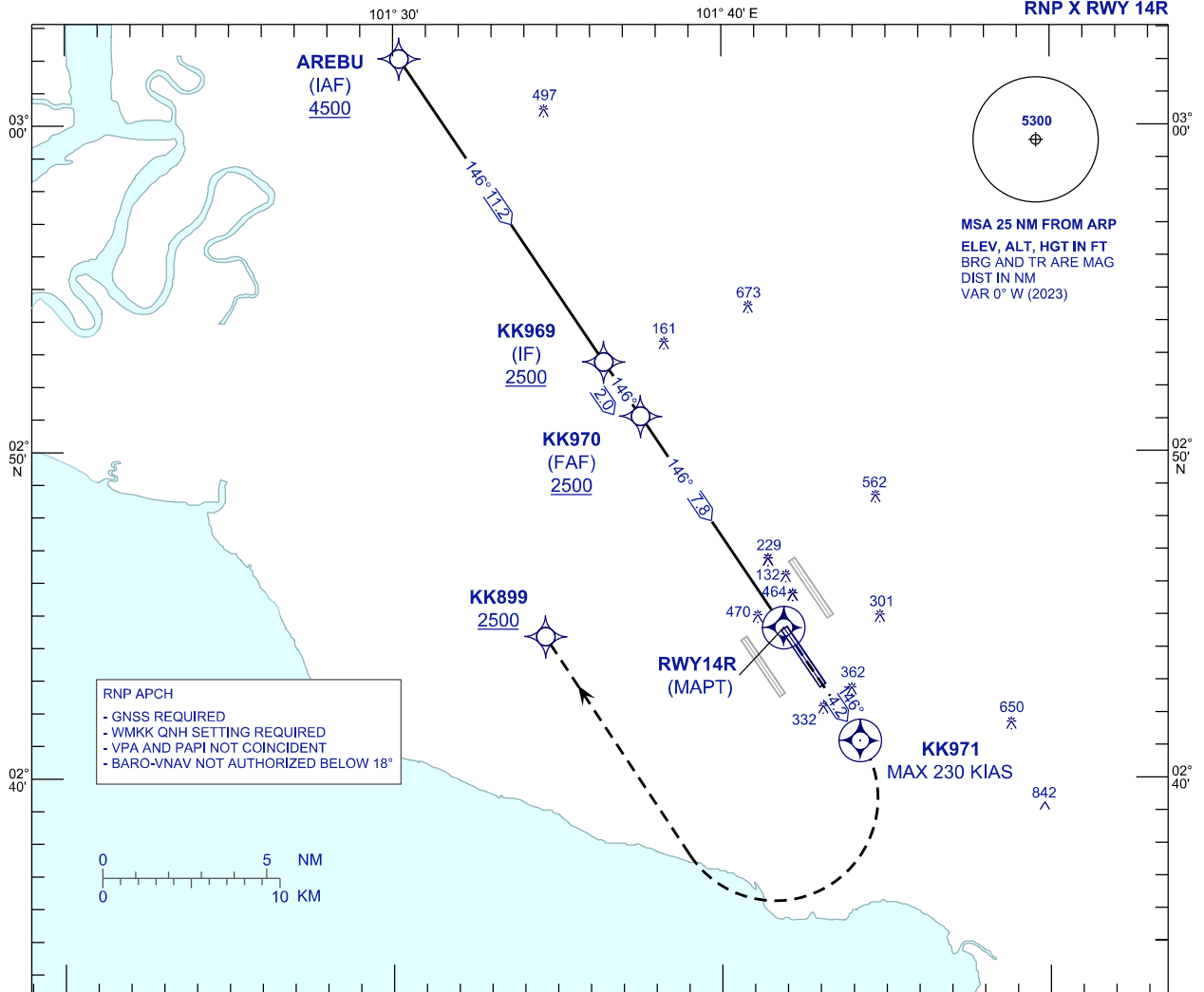


**INSTRUMENT
APPROACH
CHART - ICAO**

AERODROME ELEV 69 ft
HEIGHT RELATED TO
THR RWY 14R - ELEV 54 ft

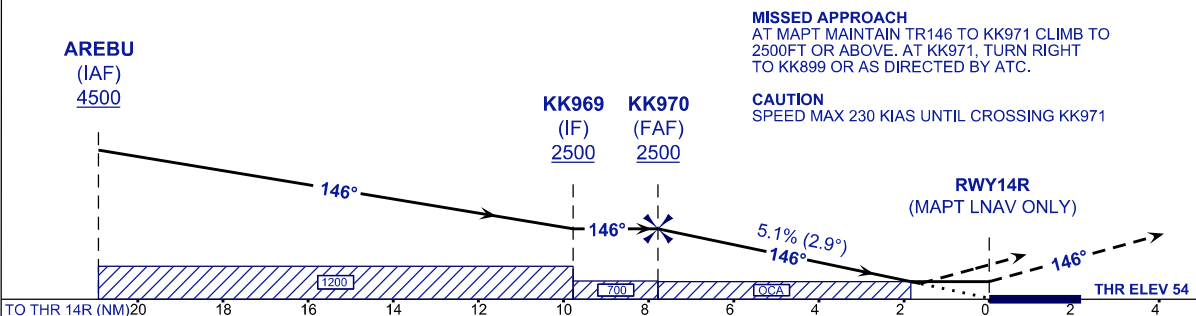
APP	TWR	SMC	D-ATIS ID-WMKK
118.65	118.50	121.80 122.525	128.05

**SEPANG/KL INTERNATIONAL
AIRPORT (WMKK)**



VPA 2.9°
TCH 52 ft

TRANSITION LEVEL FL130
TRANSITION ALT 11 000



STRAIGHT-IN APPROACH	OCA (OCH)			
CATEGORY OF AIRCRAFT	A	B	C	D
LNAV / VNAV	604 (550)			
LNAV	670 (616)			

GROUND SPEED (GS)	KNOTS	80	100	120	140	160	180		
FAF - RWY14R (7.8 NM)	MIN:SEC	5:50	4:40	3:53	3:20	2:55	2:36		
RATE OF DESCENT (5.1% / 2.9°)	FT/MIN	410	510	620	720	820	920		
DIST THR / RWY14R	NM	7.8	7.0	6.0	5.0	4.0	3.0	2.0	1.0
ALTITUDE	FT	2500	2261	1953	1646	1337	1030	722	414

CHANGES : FREQUENCY ATIS TO D-ATIS ID-WMKK.