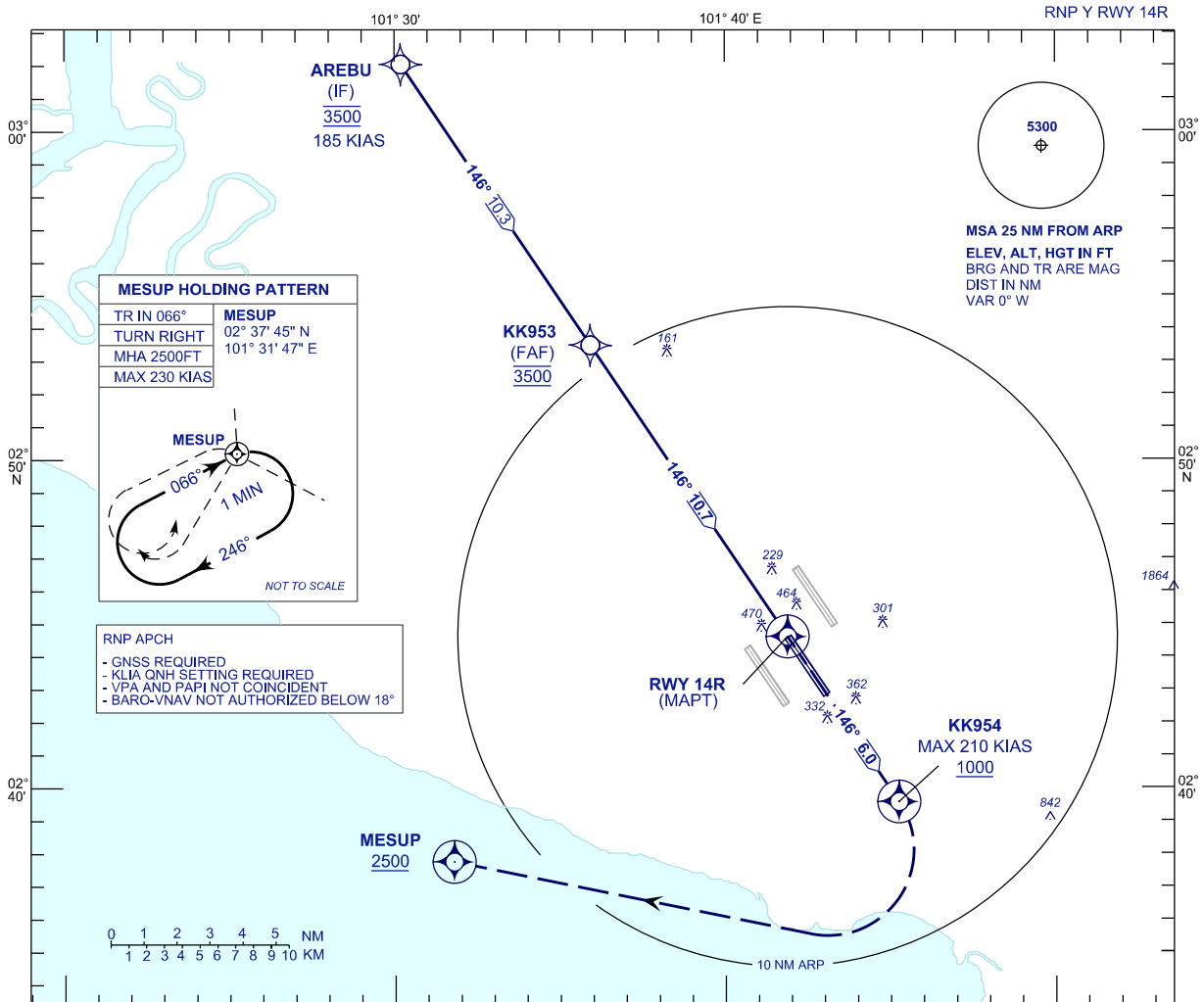


**INSTRUMENT
APPROACH
CHART - ICAO**

AERODROME ELEV 69 ft
HEIGHT RELATED TO
THR RWY 14R - ELEV 54 ft

APP 118.65 135.75 120.35	TWR 118.50	SMC 121.80 122.525	D-ATIS ID-WMKK 128.05
-----------------------------------	---------------	--------------------------	-----------------------------

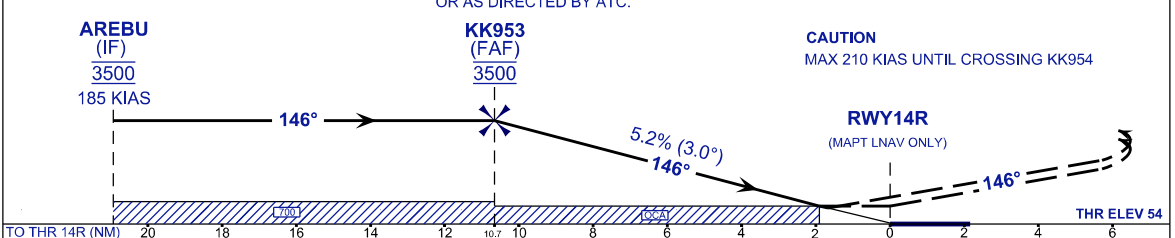
**SEPANG/KL INTERNATIONAL
AIRPORT (WMKK)**



VPA 3.0°
TCH 52 ft

MISSED APPROACH
AT MAPT MAINTAIN TR146 TO KK954 CLIMB TO 2500FT.
AT KK954, TURN RIGHT TO MESUP AND HOLD AT MESUP
OR AS DIRECTED BY ATC.

TRANSITION LEVEL FL130
TRANSITION ALT 11 000



STRAIGHT - IN APPROACH	OCA (OCH)				GROUND SPEED (GS)					KNOTS				
	A	B	C	D	FAF - RWY14R (10.7 NM)					MIN:SEC				
CATEGORY OF AIRCRAFT	A	B	C	D	RATE OF DESCENT (318.5 FT/NM)					FT/MIN				
LNAV / VNAV	630 (576)				DIST THR / RWY14R					NM				
LNAV	670 (616)				ALTITUDE					FT				
					DIST THR / RWY14R					NM				
					ALTITUDE					FT				

CHANGES : FREQUENCY ATIS TO D-ATIS ID-WMKK.