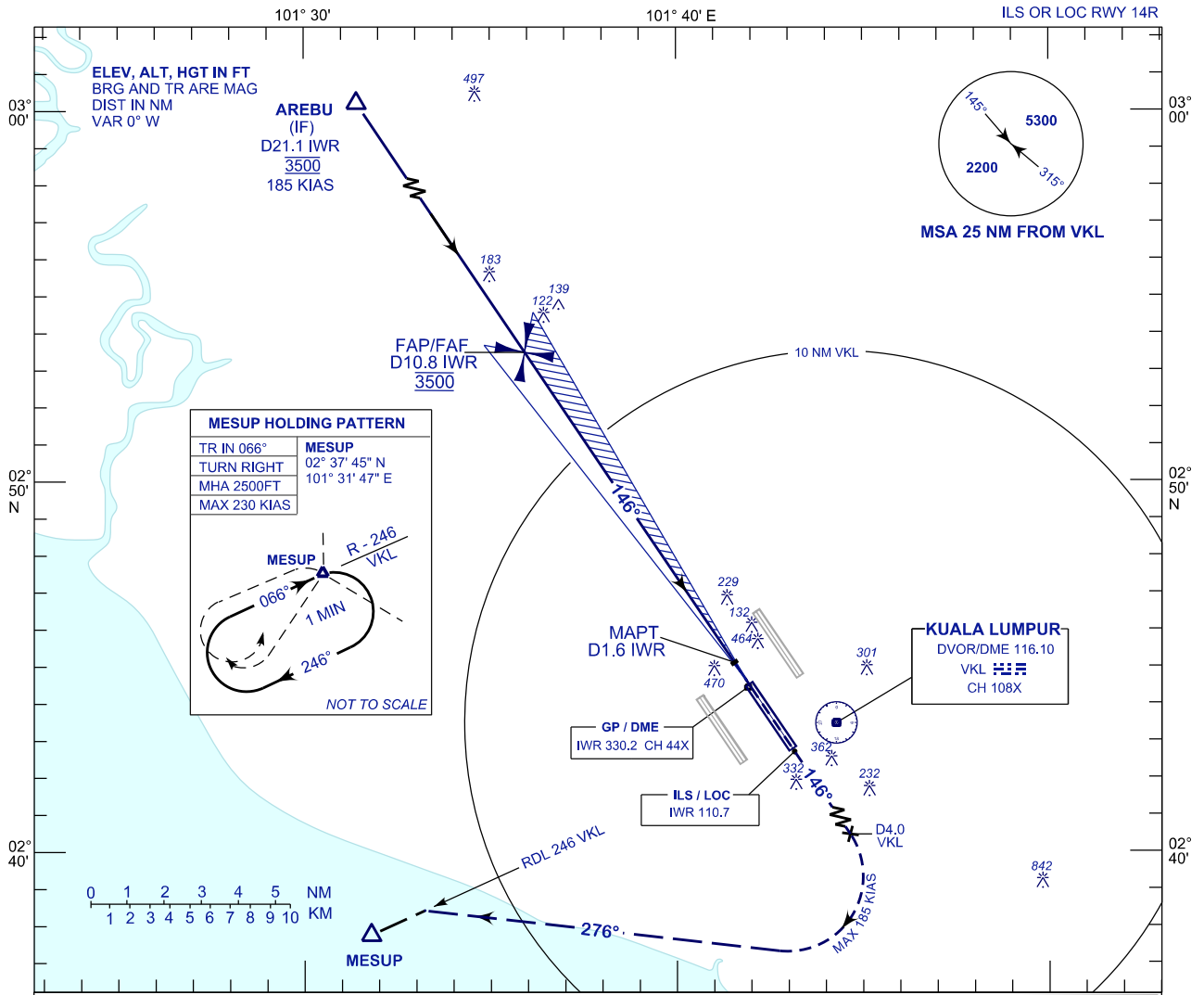


**INSTRUMENT
APPROACH
CHART - ICAO**

AERODROME ELEV 69 ft
HEIGHT RELATED TO
THR RWY 14R - ELEV 54 ft

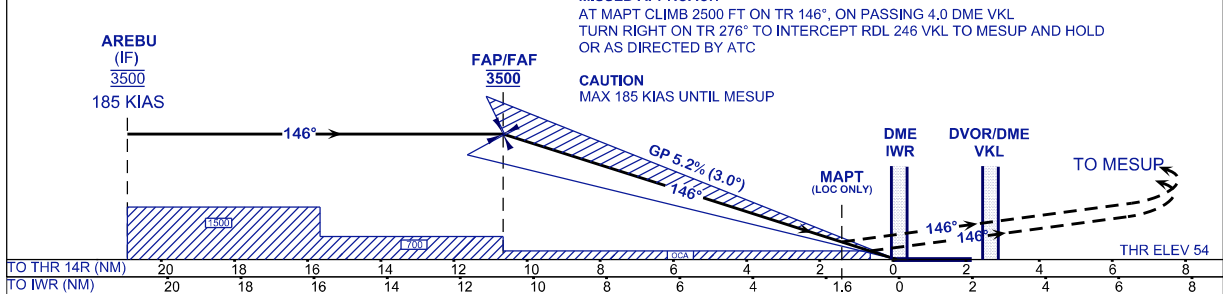
APP	TWR	SMC	D-ATIS ID-WMCK
118.65	118.80	121.80	128.05
120.35		122.525	
135.75			

**SEPANG/KL INTERNATIONAL
AIRPORT (WMCK)**



USE QNH ILS RDH 52 ft

TRANSITION LEVEL FL130
TRANSITION ALT 11 000



OCA (OCH)	A	B	C	D	GROUND SPEED (GS)	KT	80	100	120	140	160	180
ILS/DME CAT I	300 (246)				FAP - RWY14R (10.7 NM)	MIN:SEC	8:00	6:24	5:20	4:35	4:00	3:34
LOC/DME (GP INOP)	650 (596)				RATE OF DESCEND (318.4 FT/NM)	FT/MIN	420	530	630	740	840	950

DME IWR	NM	10.9	9.9	8.9	7.9	6.9	5.9	4.9	3.9	2.9	1.9	0.9
DIST THR/RWY14R	NM	10.7	9.7	8.7	7.7	6.7	5.7	4.7	3.7	2.7	1.7	0.7
ALTITUDE	FT	3500	3195	2877	2558	2240	1921	1603	1284	966	647	329

CHANGES : FREQUENCY ATIS TO D-ATIS ID-WMCK.