

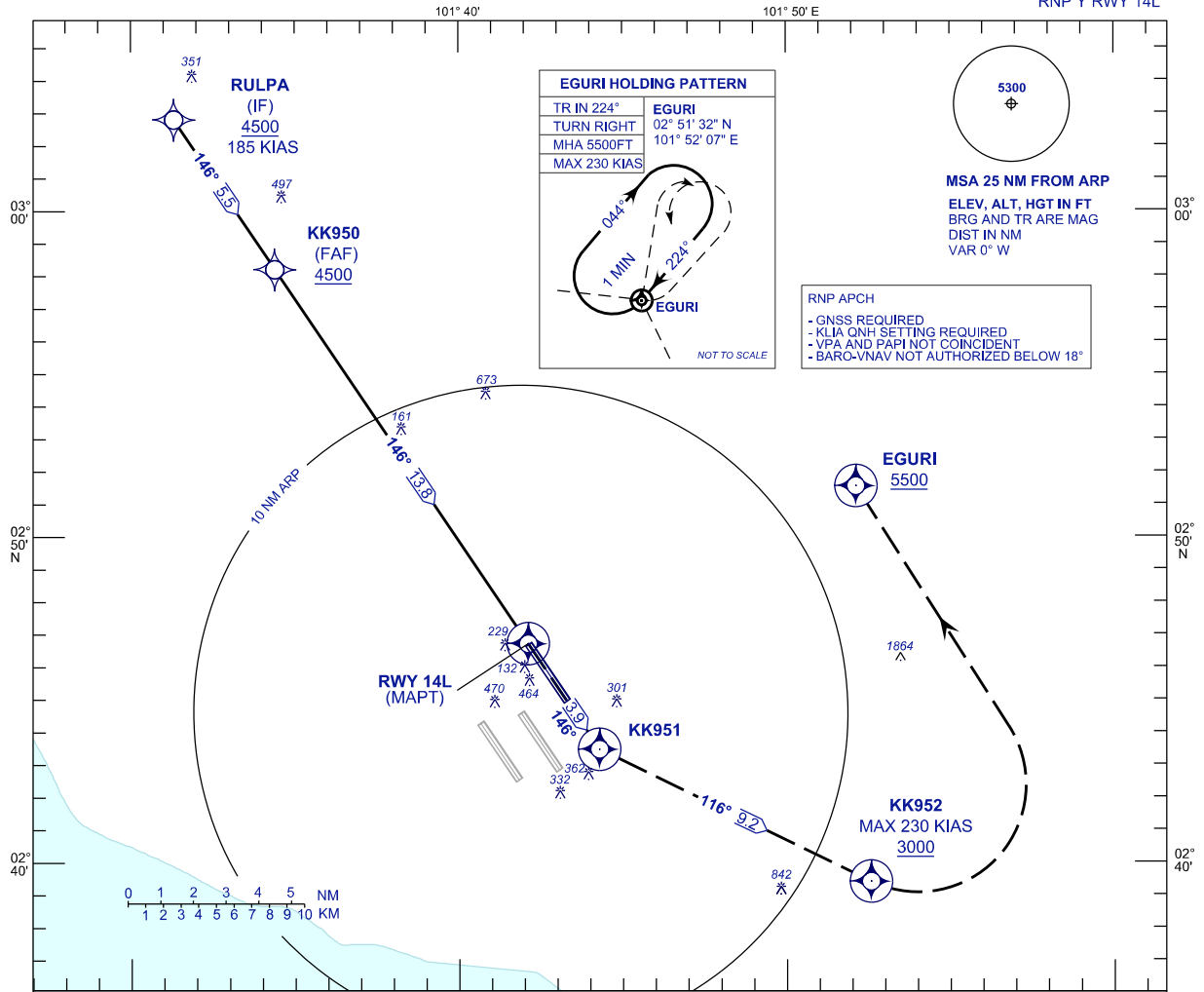
**INSTRUMENT
APPROACH
CHART - ICAO**

AERODROME ELEV 69 ft
HEIGHT RELATED TO
THR RWY 14L - ELEV 54 ft

APP 118.65 120.35 135.75	TWR 118.80	SMC 121.65	D-ATIS ID-WMKK 128.05
-----------------------------------	---------------	---------------	-----------------------------

**SEPANG/KL INTERNATIONAL
AIRPORT (WMKK)**

RNP Y RWY 14L

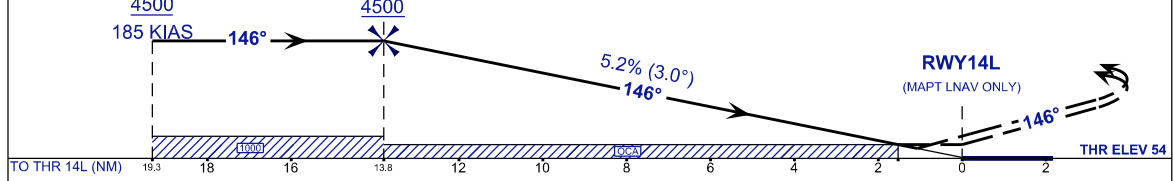


VPA 3.0°
TCH 52 ft

MISSED APPROACH
AT MAPT, TR146 TO KK951 CLIMB TO 5500FT OR ABOVE.
INTERCEPT TR116 TO KK952, THEN TURN LEFT
TO EGURI AND HOLD OR AS DIRECTED BY ATC.

TRANSITION LEVEL FL130
TRANSITION ALT 11 000

RULPA (IF) 4500 **KK950 (FAF) 4500** **CAUTION**
185 KIAS → 146° → 5.2% (3.0°) → 146° → RWY14L (MAPT LNAV ONLY)
NOTE: MAX 230 KIAS UNTIL CROSSING KK952
NOTE: MACG 3.0% UNTIL PASSING 5500FT



STRAIGHT - IN APPROACH		OCA (OCH)				GROUND SPEED (GS)		KNOTS								
CATEGORY OF AIRCRAFT		A	B	C	D	FAF - RWY14L (13.8 NM)		MIN:SEC	80	100	120	140	160	180		
LNAV / VNAV	3.0% MACG [Ⓞ]	440 (386)				RATE OF DESCENT (318.5 FT/NM)		FT/MIN	420	530	630	740	840	950		
	2.5% MACG	840 (786)				DIST THR / RWY14L		NM	13.8	12.8	11.8	10.8	9.8	8.8	7.8	6.8
LNAV	3.0% MACG [Ⓞ]	590 (536)				ALTITUDE		FT	4500	4180	3862	3543	3225	2906	2588	2270
	2.5% MACG	1100 (1046)				DIST THR / RWY14L		NM	5.8	4.8	3.8	2.8	1.8	0.8		
						ALTITUDE		FT	1951	1633	1314	996	677	359		

MACG - MISSED APPROACH CLIMB GRADIENT
Ⓞ IF UNABLE TO MAINTAIN A 3.0% MACG, USE LNAV OR LNAV / VNAV 2.5% OCA

CHANGES : FREQUENCY ATIS TO D-ATIS ID-WMKK.