

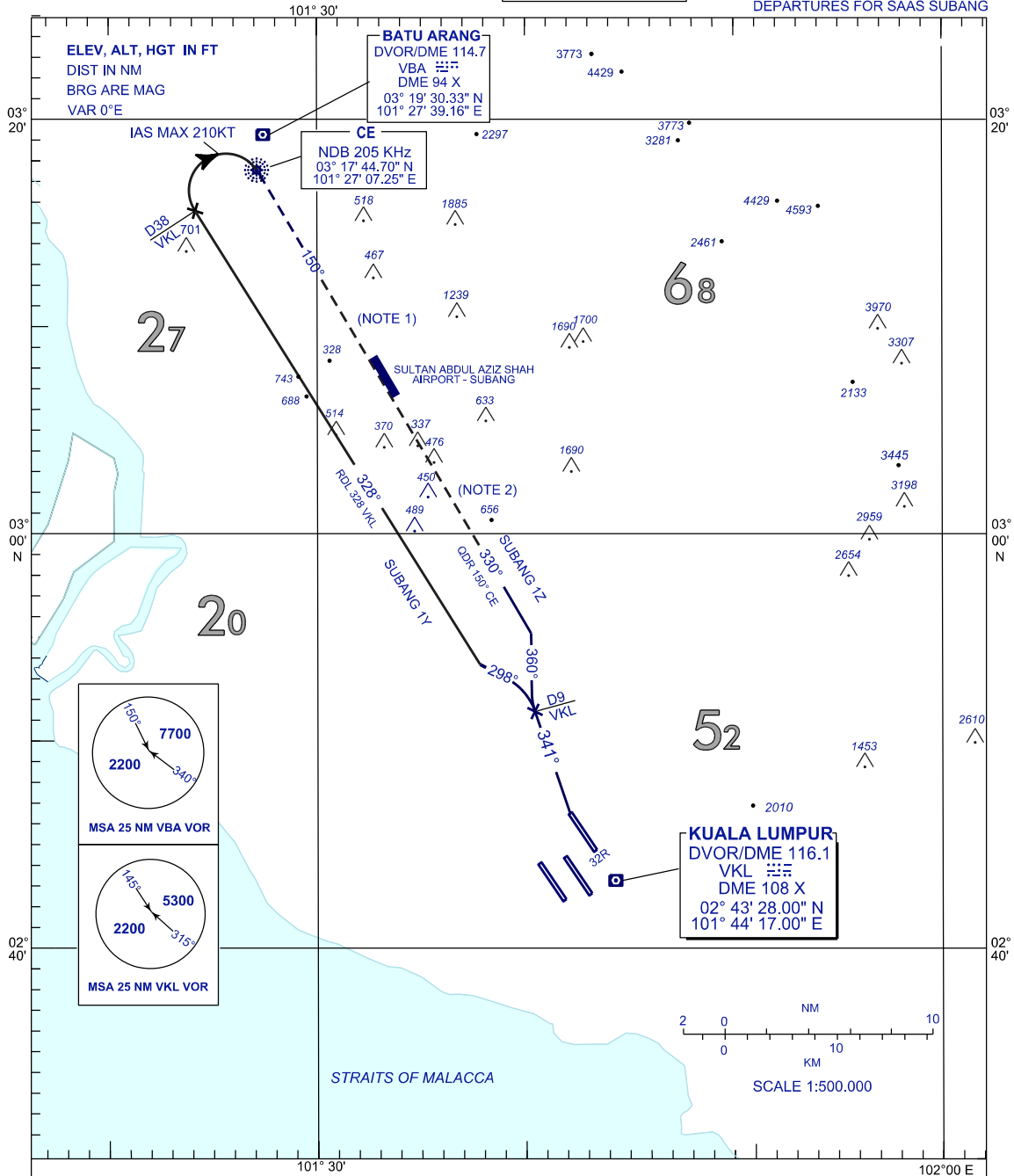
**STANDARD DEPARTURE CHART
INSTRUMENT (SID) - ICAO**

APP	135.250, 124.200,
TWR	118.650
GND	121.650
D-ATIS	126.450
ID-WMKK	

**SEPANG/KL INTERNATIONAL
AIRPORT (WMKK)
RWY 32R**

TRANSITION ALT
11000 ft

DEPARTURES FOR SAAS SUBANG



REMARKS :

NOTE 1 : EXPECT ILS OR LOC APPROACH RWY15 OR RNP Y APPROACH RWY15

NOTE 2 : EXPECT RNP Y APPROACH RWY33

SUBANG 1Z : AFTER TAKE-OFF PROCEED ON TR 341° UNTIL 9 DME VKL, THEN TURN RIGHT ON TR 360° UNTIL JOINING QDR 150° CE NDB. EXPECT RNP Y APPROACH RWY33.

SUBANG 1Y : AFTER TAKE-OFF PROCEED ON TR 341° UNTIL 9 DME VKL, THEN TURN LEFT ON TR 298° TO INTERCEPT AND FOLLOW RDL 328° VKL VOR. AT 38 DME VKL TURN RIGHT (IAS MAX 210KT) TO CE NDB. EXPECT ILS OR LOC APPROACH RWY 15 OR RNP Y APPROACH RWY15.

CHANGES : FREQUENCY ATIS TO D-ATIS ID-WMKK.