

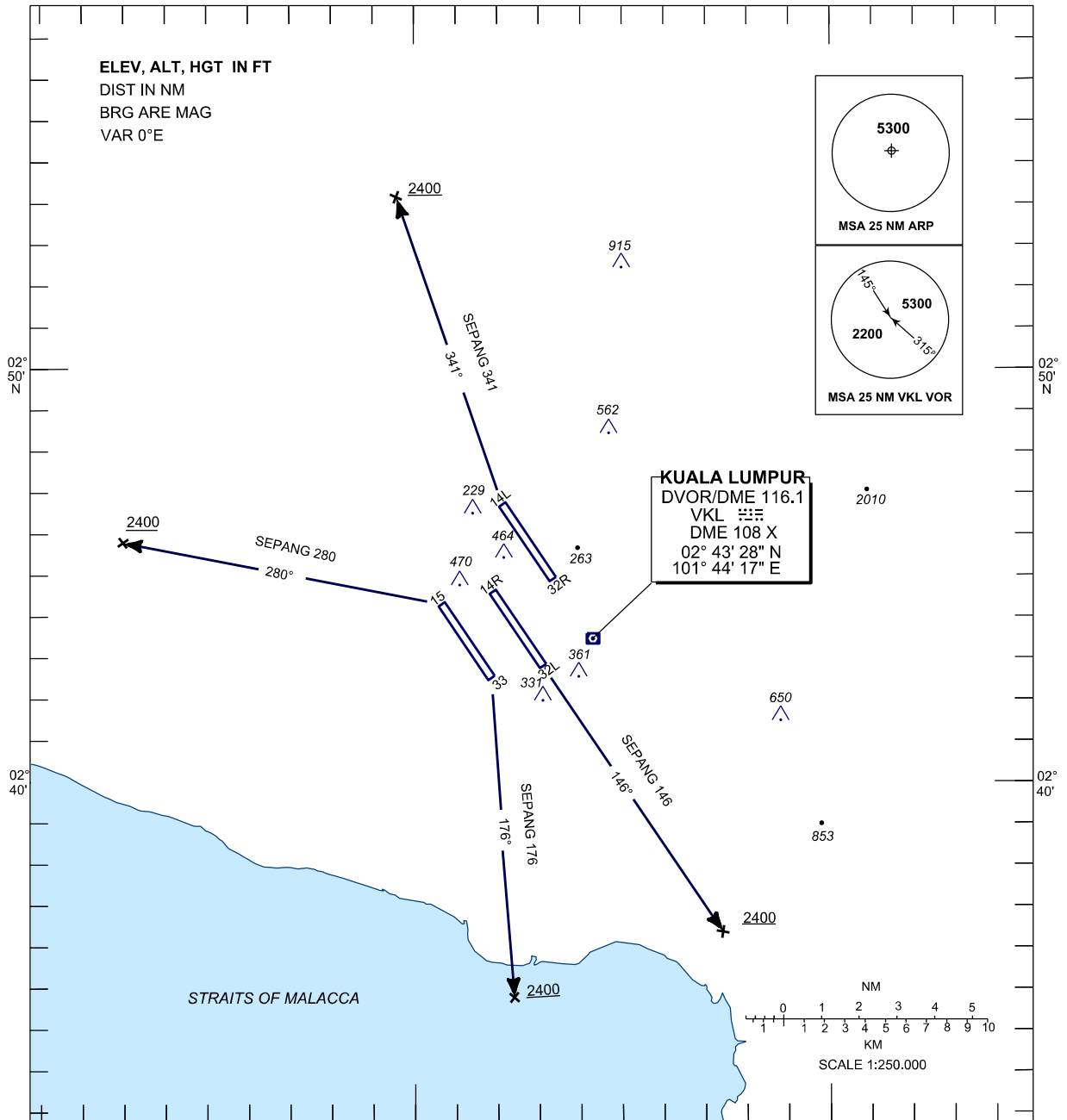
**STANDARD DEPARTURE CHART
INSTRUMENT (SID) - ICAO**

TRANSITION ALT
11000 ft

APP	135.250
TWR	118.800, 118.500
	119.800
GND	121.650, 121.800
	122.525, 118.050
D-ATIS	126.450
ID-WMKK	

**SEPANG/KL INTERNATIONAL
AIRPORT (WMKK)**

RADAR DEPARTURES



RWY 33 - SEPANG 280

AFTER TAKE - OFF TURN LEFT TR 280° UNTIL PASSING 2400FT, THEN FOLLOW THE ASSIGNED HEADING.

RWY 32R - SEPANG 341

AFTER TAKE - OFF PROCEED ON TR 341° UNTIL PASSING 2400FT, THEN FOLLOW THE ASSIGNED HEADING.

RWY 14R - SEPANG 146

AFTER TAKE - OFF PROCEED ON TR 146° UNTIL PASSING 2400FT, THEN FOLLOW THE ASSIGNED HEADING.

RWY 15 - SEPANG 176

AFTER TAKE - OFF TURN RIGHT ON TR 176° UNTIL PASSING 2400FT, THEN FOLLOW THE ASSIGNED HEADING.

REMARKS: A) MINIMUM CLIMB GRADIENT 5% (304 FT/NM) UNTIL LEAVING 2400FT, FOR ATC PURPOSES.

B) TURN BEFORE DER IS NOT ALLOWED.

CHANGES: FREQUENCY ATIS TO D-ATIS ID-WMKK.