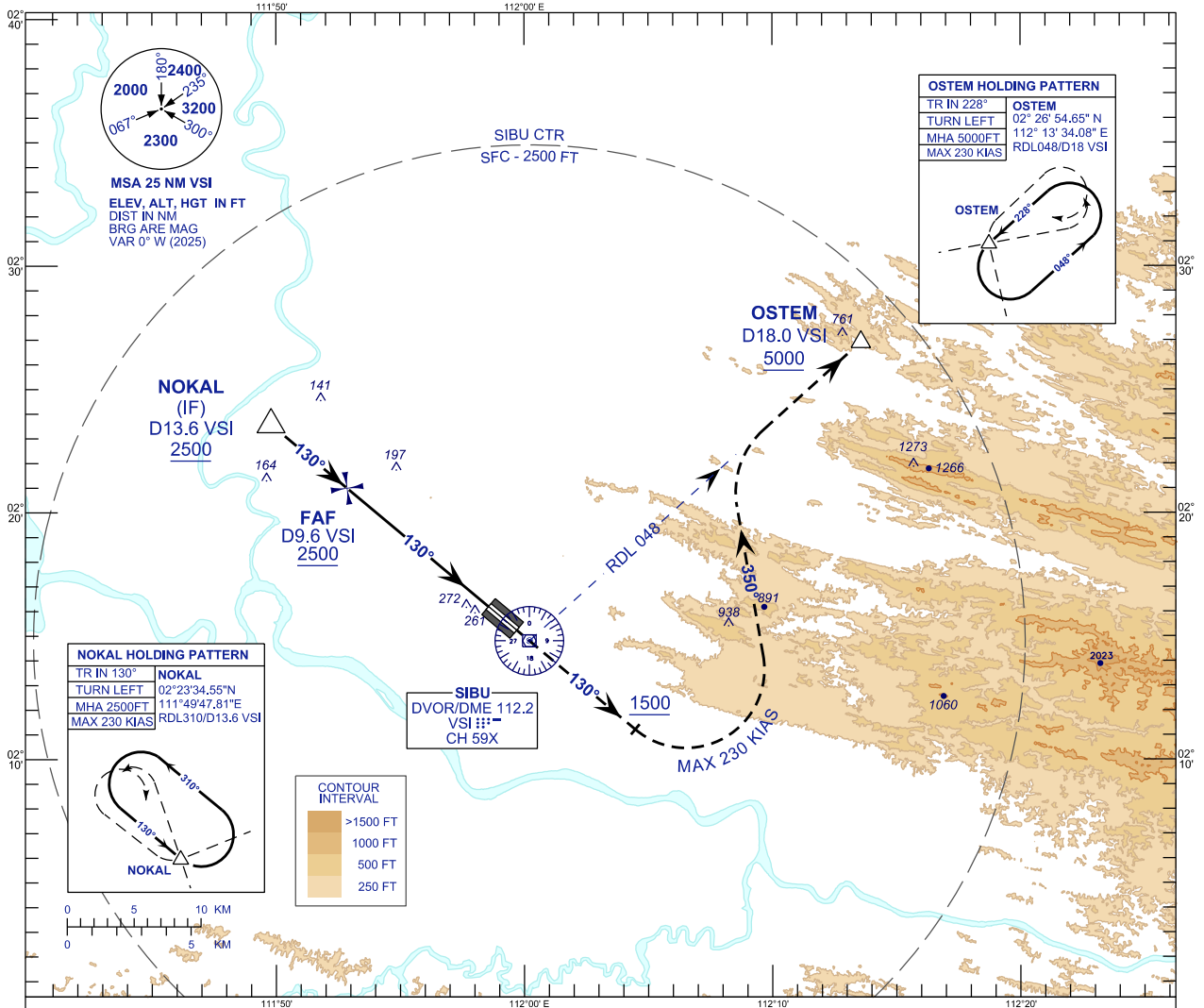


**INSTRUMENT
APPROACH
CHART - ICAO**

AERODROME ELEV 121 FT
HEIGHTS RELATED TO
THR RWY 13 - ELEV 81 FT

APP	122.60 (P), 124.40 (S)
TWR	123.20
SMC	121.90
ATIS	127.65

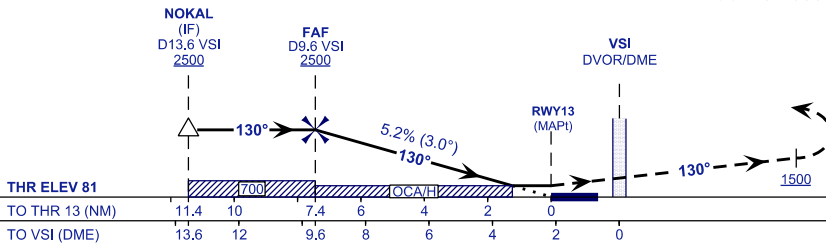
SIBU/SIBU (WBGS)
VOR Z RWY 13



TRANSITION LEVEL FL 130
TRANSITION ALT 11000

MISSED APPROACH
AT MAPT/OCA(H) CLIMB 5000FT OR ABOVE ON TR 130°,
AFTER PASSING 1500 FT TURN LEFT TO OSTEM AND HOLD,
OR AS DIRECTED BY ATC

CAUTION
MISSED APPROACH TURN SPEED
MAX 230 KIAS



	OCA (H)			
CATEGORY OF AIRCRAFT	A	B	C	D
VOR/DME	520 (439)			

DME VSI	NM	9.6	8.6	7.6	6.6	5.6	4.6	3.6	2.6
DIST THR / RWY13	NM	7.4	6.4	5.4	4.4	3.4	2.4	1.4	0.4
ALTITUDE	FT	2500	2170	1851	1533	1215	896	578	259

GROUND SPEED (GS)	KT	80	100	120	140	160	180
FAF - THR (7.4 NM)	MIN:SEC	5:35	4:28	3:43	3:11	2:47	2:29
RATE OF DESCEND (318.4 FT/NM)	FT/MIN	420	530	640	740	850	960

CHANGES : NON-COMPULSORY POINT FOR NOKAL