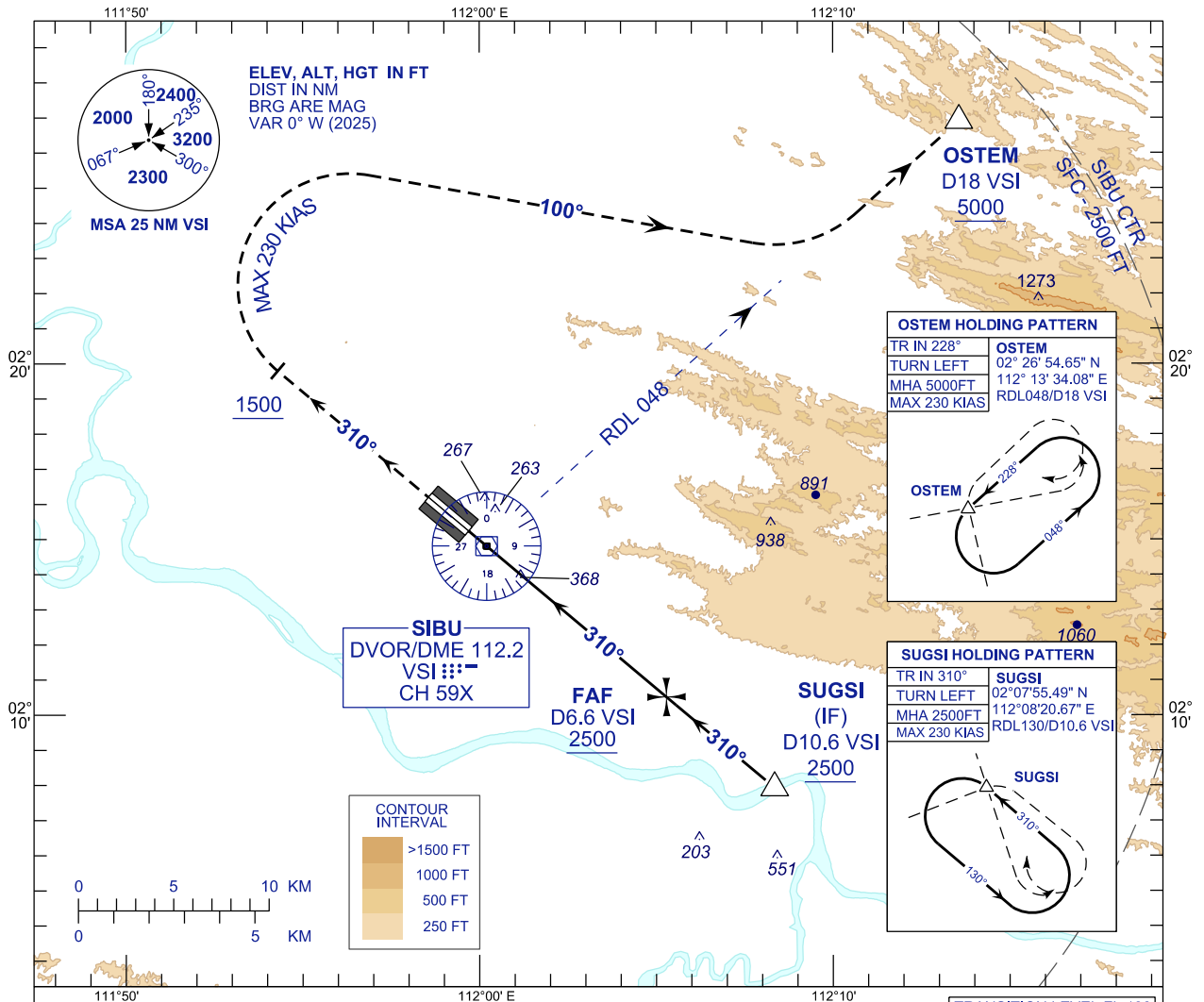


**INSTRUMENT
APPROACH
CHART - ICAO**

AERODROME ELEV 121 FT
HEIGHTS RELATED TO
THR RWY 31 - ELEV 121 FT

APP	122.60 (P), 124.40 (S)
TWR	123.20
SMC	121.90
ATIS	127.65

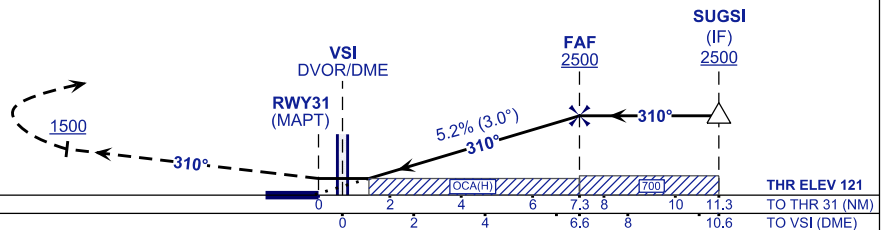
**SIBU/SIBU (WBGS)
VOR Z RWY 31**



MISSED APPROACH
AT MAPT/OCA(H) CLIMB 5000FT OR ABOVE ON TR 310°
AFTER PASSING 1500FT TURN RIGHT TO OSTEM AND HOLD,
OR AS DIRECTED BY ATC.

CAUTION
MISSED APPROACH TURN SPEED
MAX 230 KIAS

TRANSITION LEVEL FL 130
TRANSITION ALT 11000



	OCA (H)			
CATEGORY OF AIRCRAFT	A	B	C	D
VOR / DME	620 (499)			

DME VSI	NM	6.6	5.6	4.6	3.6	2.6	1.6	0.6	0.4
DIST THR / RWY31	NM	7.3	6.3	5.3	4.3	3.3	2.3	1.3	0.3
ALTITUDE	FT	2500	2177	1859	1540	1222	904	585	267

GROUND SPEED (GS)	KT	80	100	120	140	160	180
FAF - THR31 (7.3 NM)	MIN:SEC	5:29	4:23	3:39	3:08	2:45	2:26
RATE OF DESCEND (318.4 FT/NM)	FT/MIN	420	530	640	740	850	960

CHANGES : COORDINATES FOR SUGSI