

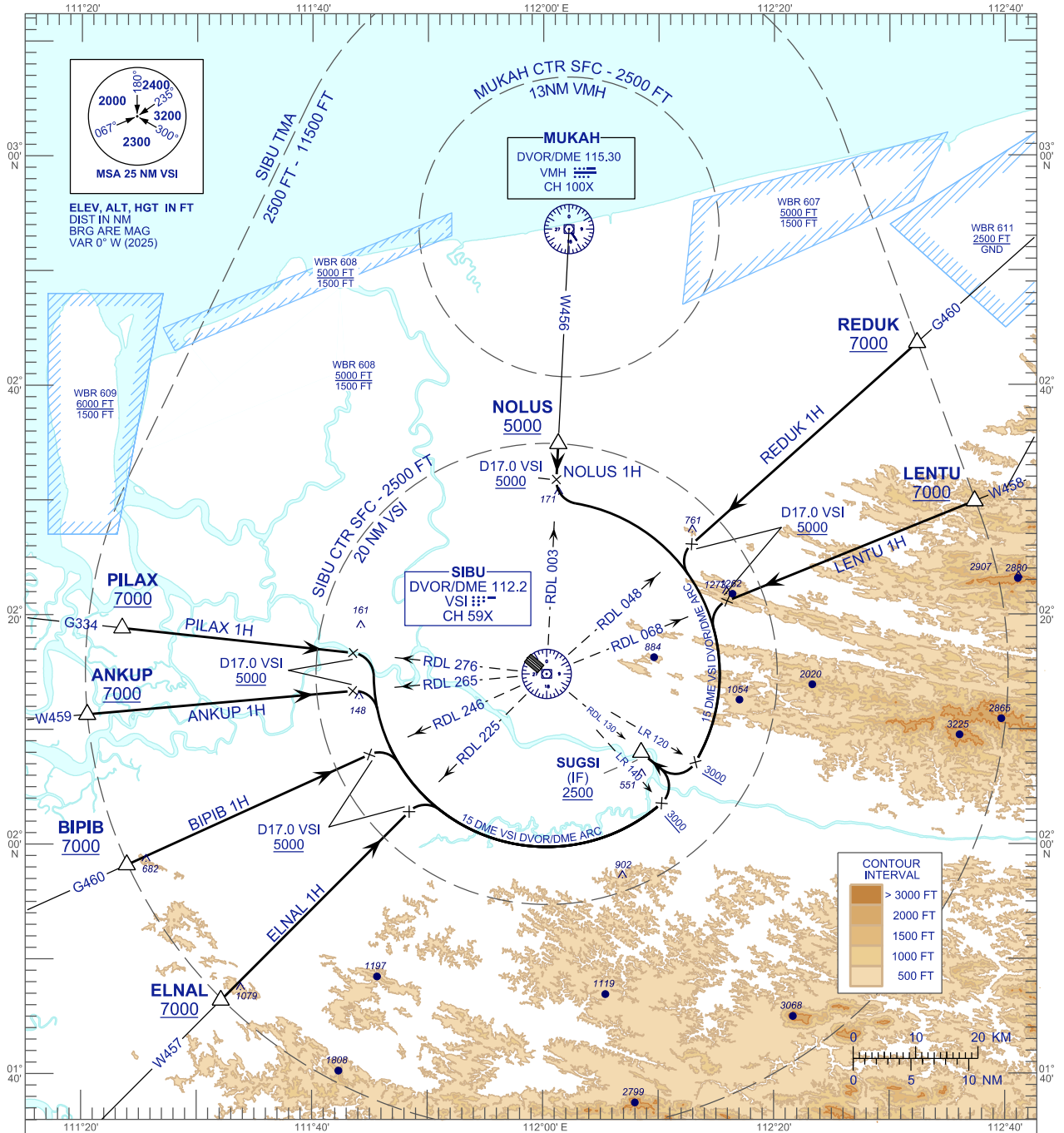
**STANDARD ARRIVAL CHART
INSTRUMENT (STAR) - ICAO**

TRANSITION ALTITUDE
11000 FT

APP	122.6 (P), 124.4 (S)
TWR	123.20
SMC	121.90
ATIS	127.65

SIBU/SIBU (WBGS)

	RWY 31
NOLUS 1H	REDUK 1H
ELNAL 1H	BIPIB 1H
	ANKUP 1H
	PILAX 1H



COMMUNICATION FAILURE:

- * SQUAWK 7600
- * IF UNDER PILOT NAVIGATION, MAINTAIN LAST ASSIGNED LEVEL FOR 3 MINUTES, IF NO ONWARD CLEARANCE IS RECEIVED SUBSEQUENTLY DESCEND TO COMPLY WITH STAR AND LAND
- * IF UNDER RADAR VECTORED, MAINTAIN VECTOR FOR 1 MINUTES
- * IF BELOW MSA, CLIMB TO MSA, THEN TRACK TO INTERCEPT CLEARED OR PREVIOUSLY ASSIGNED STAR AND LAND

CHANGES : MUKAH CTR VERTICAL LIMITS