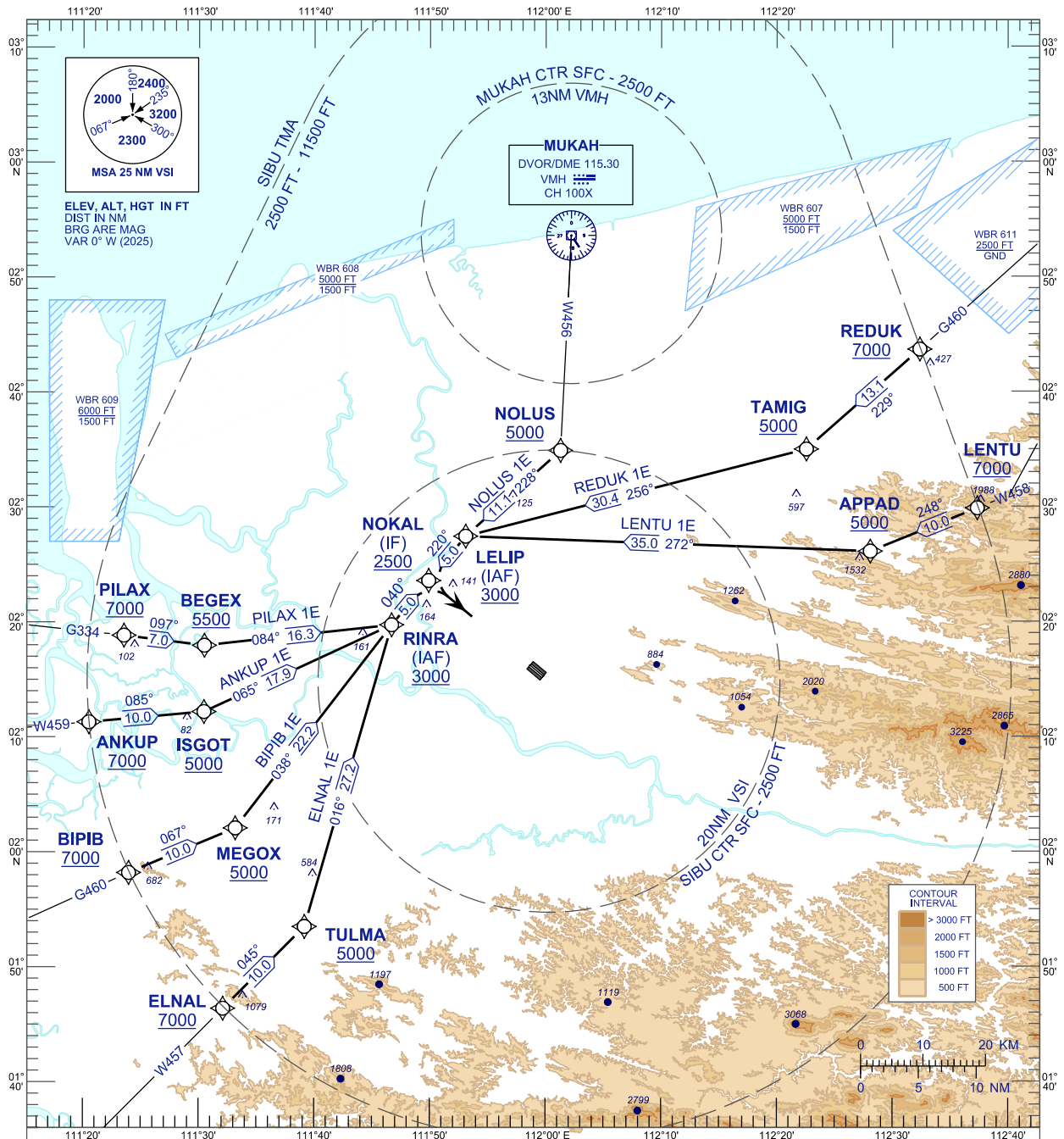


**STANDARD ARRIVAL CHART
INSTRUMENT (STAR) - ICAO**

TRANSITION ALTITUDE
11000 FT

APP	122.6 (P), 124.4 (S)
TWR	123.20
SMC	121.90
ATIS	127.65

**SIBU/SIBU (WBGS)
RNAV (GNSS) RWY 13**
NOLUS 1E REDUK 1E LENTU 1E
ELNAL 1E BIPIB 1E ANKUP 1E
PILAX 1E



COMMUNICATION FAILURE:

- * SQUAWK 7600
- * IF UNDER PILOT NAVIGATION, MAINTAIN LAST ASSIGNED LEVEL FOR 3 MINUTES, IF NO ONWARD CLEARANCE IS RECEIVED SUBSEQUENTLY DESCEND TO COMPLY WITH STAR AND LAND
- * IF UNDER RADAR VECTORED, MAINTAIN VECTOR FOR 1 MINUTES
- * IF BELOW MSA, CLIMB TO MSA, THEN TRACK TO INTERCEPT CLEARED OR PREVIOUSLY ASSIGNED STAR AND LAND

CHANGES : MUKAH CTR VERTICAL LIMITS