

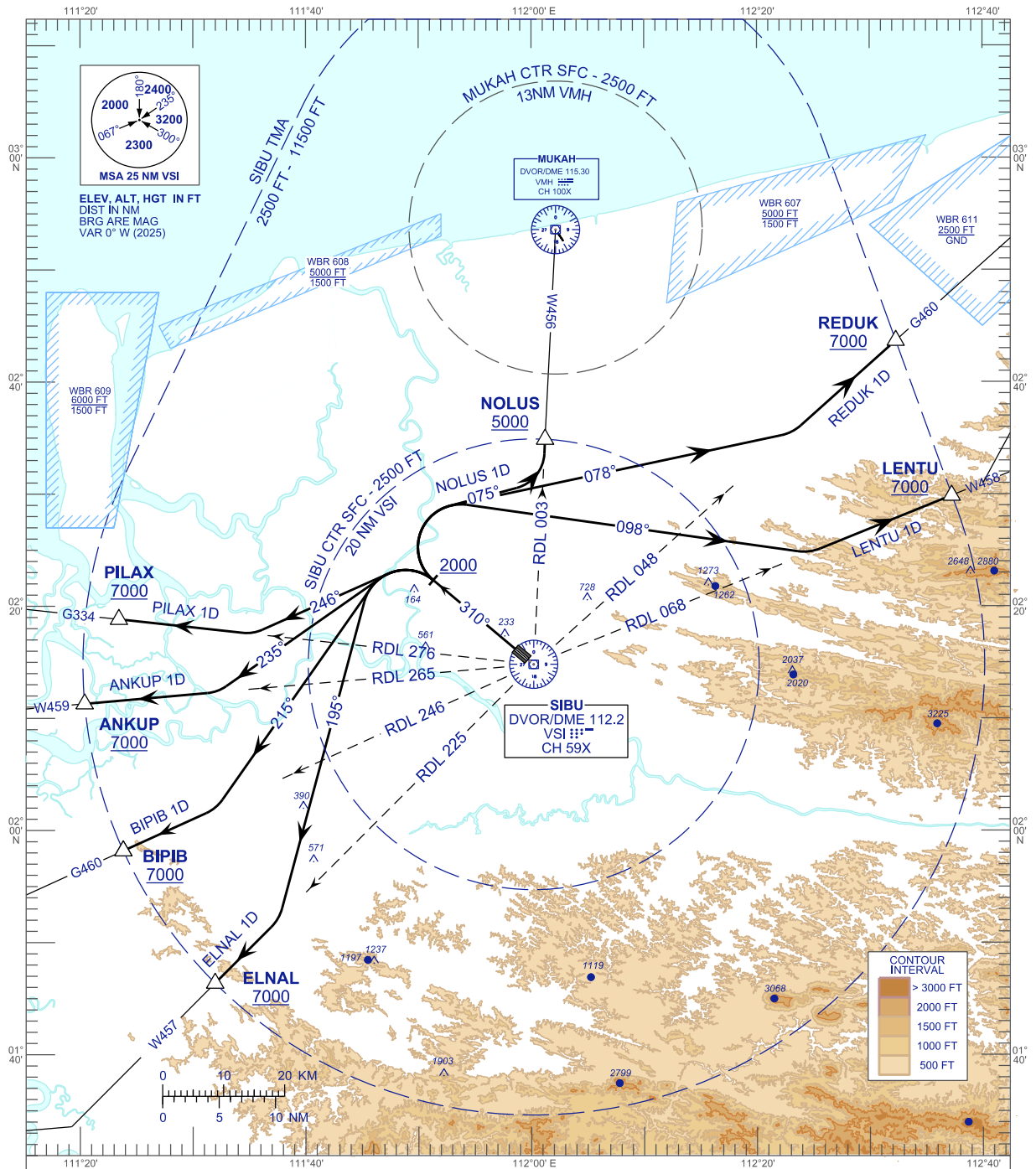
**STANDARD DEPARTURE CHART  
INSTRUMENT (SID) - ICAO**

APP	122.6 (P), 124.4 (S)
TWR	123.20
SMC	121.90
ATIS	127.65

**SIBU/SIBU (WBGS)**

- RWY 31**  
 NOLUS 1D REDUK 1D LENTU 1D  
 ELNAL 1D BIPIB 1D ANKUP 1D  
 PILAX 1D

TRANSITION ALTITUDE  
11000 FT



**COMMUNICATION FAILURE:**

- \* SQUAWK 7600
- \* IF UNDER PILOT NAVIGATION, MAINTAIN LAST ASSIGNED LEVEL FOR 3 MINUTES, IF NO ONWARD CLEARANCE IS RECEIVED SUBSEQUENTLY CLIMB TO COMPLY WITH SID
- \* IF UNDER RADAR VECTORED, MAINTAIN VECTOR FOR 2 MINUTES
- \* IF BELOW MSA, CLIMB TO MSA, THEN TRACK TO INTERCEPT CLEARED OR PREVIOUSLY ASSIGNED SID TO DESTINATION

CHANGES : MUKAH CTR VERTICAL LIMITS