

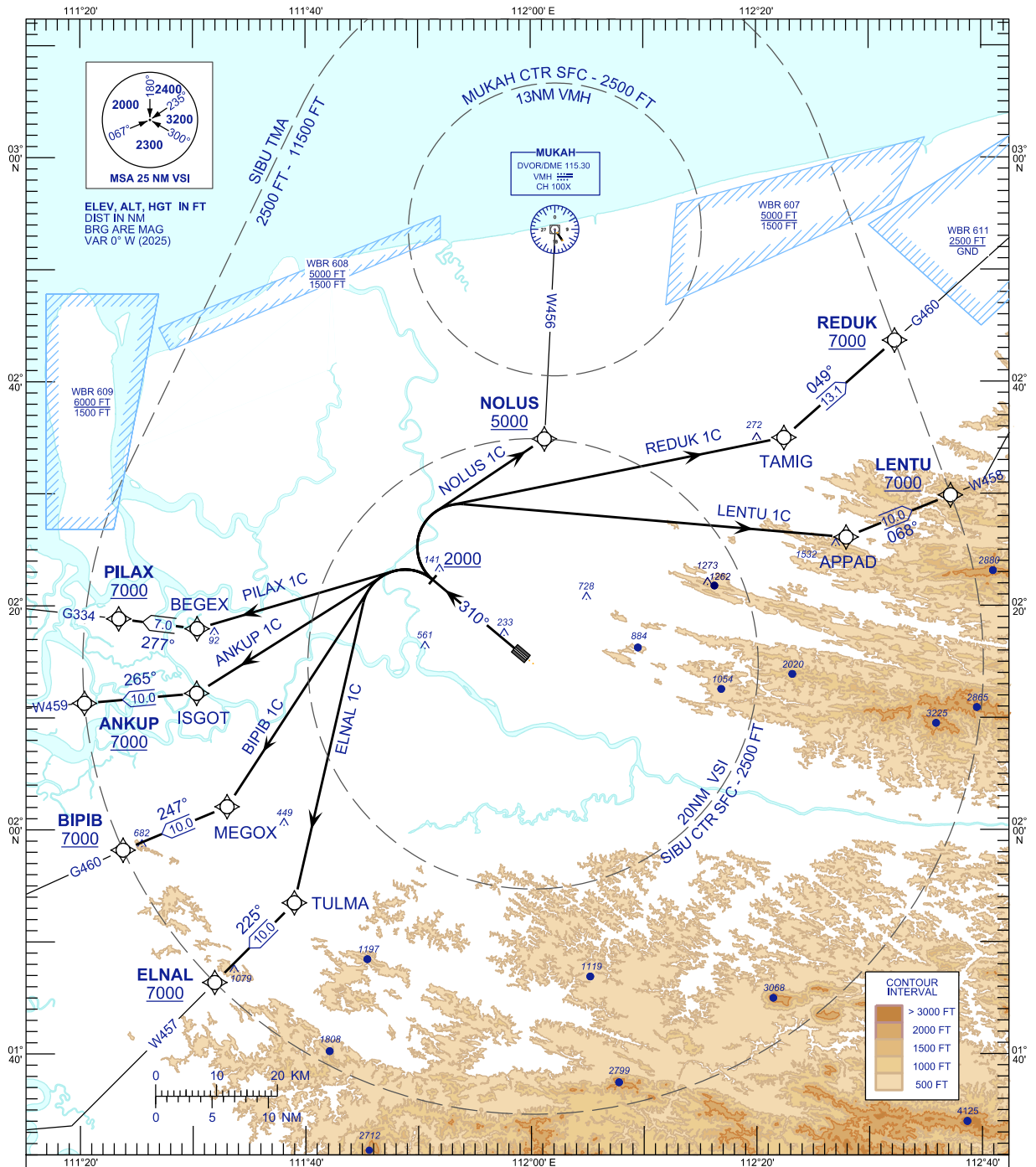
**STANDARD DEPARTURE CHART
INSTRUMENT (SID) - ICAO**

TRANSITION ALTITUDE
11000 FT

APP 122.6 (P), 124.4 (S)
TWR 123.20
SMC 121.90
ATIS 127.65

**SIBU/SIBU (WBGS)
RNAV (GNSS) RWY 31**

NOLUS 1C REDUK 1C LENTU 1C
ELNAL 1C BIPIB 1C ANKUP 1C
PILAX 1C



COMMUNICATION FAILURE:

- * SQUAWK 7600
- * IF UNDER PILOT NAVIGATION, MAINTAIN LAST ASSIGNED LEVEL FOR 3 MINUTES, IF NO ONWARD CLEARANCE IS RECEIVED SUBSEQUENTLY CLIMB TO COMPLY WITH SID
- * IF UNDER RADAR VECTORED, MAINTAIN VECTOR FOR 2 MINUTES
- * IF BELOW MSA, CLIMB TO MSA, THEN TRACK TO INTERCEPT CLEARED OR PREVIOUSLY ASSIGNED SID TO DESTINATION

CHANGES : MUKAH CTR VERTICAL LIMITS