

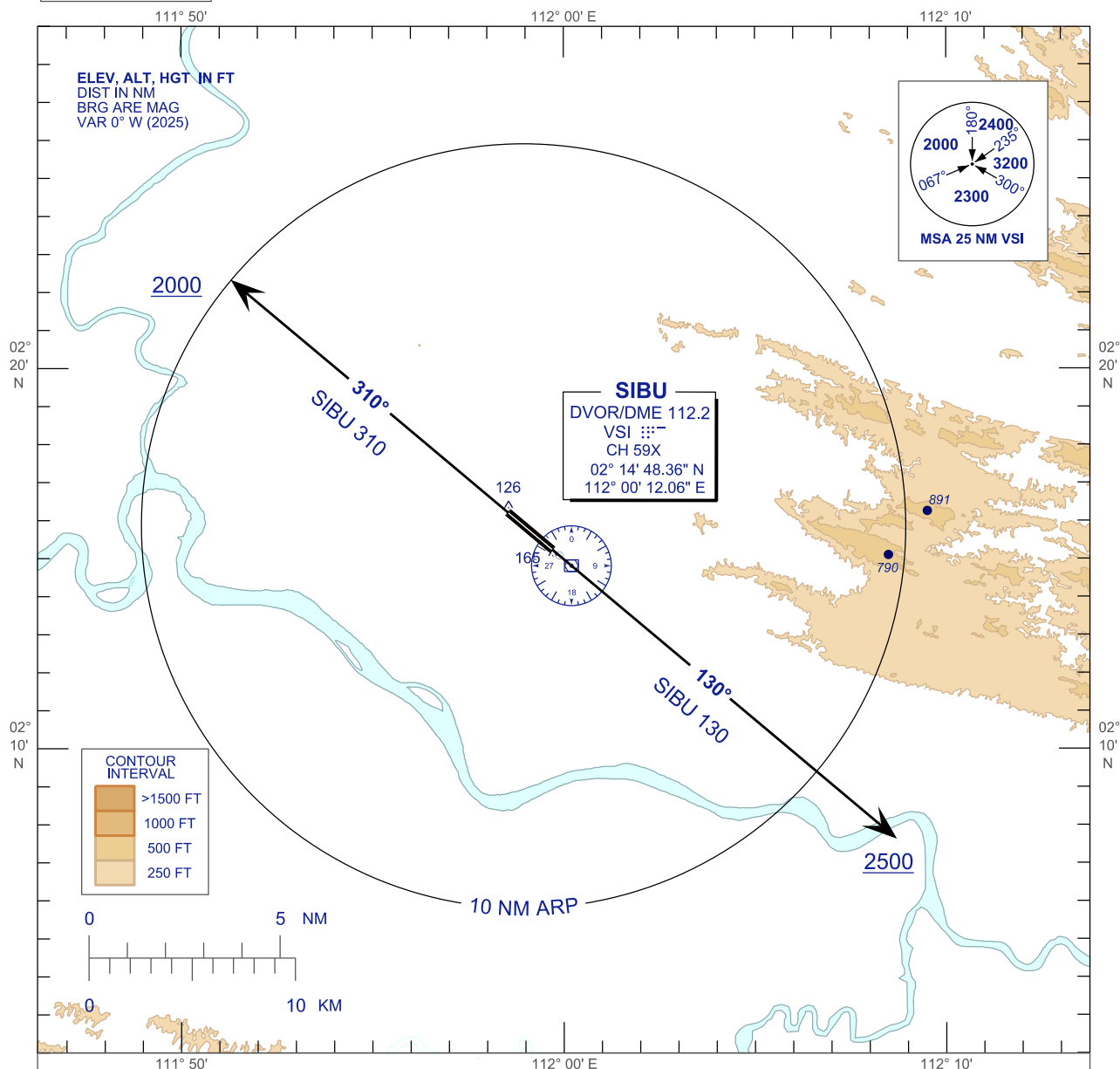
**STANDARD DEPARTURE CHART
INSTRUMENT (SID) - ICAO**

APP	122.6 (P), 124.4 (S)
TWR	123.20
SMC	121.90
ATIS	127.65

**SIBU/SIBU (WBGS)
RWY 13 / RWY 31**

TRANSITION ALTITUDE
11000 FT

RADAR DEPARTURE



RWY 13 - SIBU 130

AFTER TAKE-OFF PROCEED ON TR 130°
UNTIL PASSING 2500FT,
THEN FOLLOW THE ASSIGNED HEADING.
CONTACT SIBU RADAR WHEN AIRBORNE

RWY 31 - SIBU 310

AFTER TAKE-OFF PROCEED ON TR 310°
UNTIL PASSING 2000FT,
THEN FOLLOW THE ASSIGNED HEADING.
CONTACT SIBU RADAR WHEN AIRBORNE

COMMUNICATIONS FAILURE:

IMMEDIATELY SQUAWK 7600
MAINTAIN ASSIGNED HEADING - CLIMB TO MSA OR LAST ASSIGNED LEVEL IF HIGHER
MAINTAIN MSA OR ASSIGNED LEVEL, AS APPLICABLE FOR 2 MINUTES
THEN CLIMB TO FLIGHT PLANNED LEVEL AND INTERCEPT FLIGHT PLANNED TRACK
(AS AMMENDED BY ATC, IF APPLICABLE)

REPLACEMENT CHART