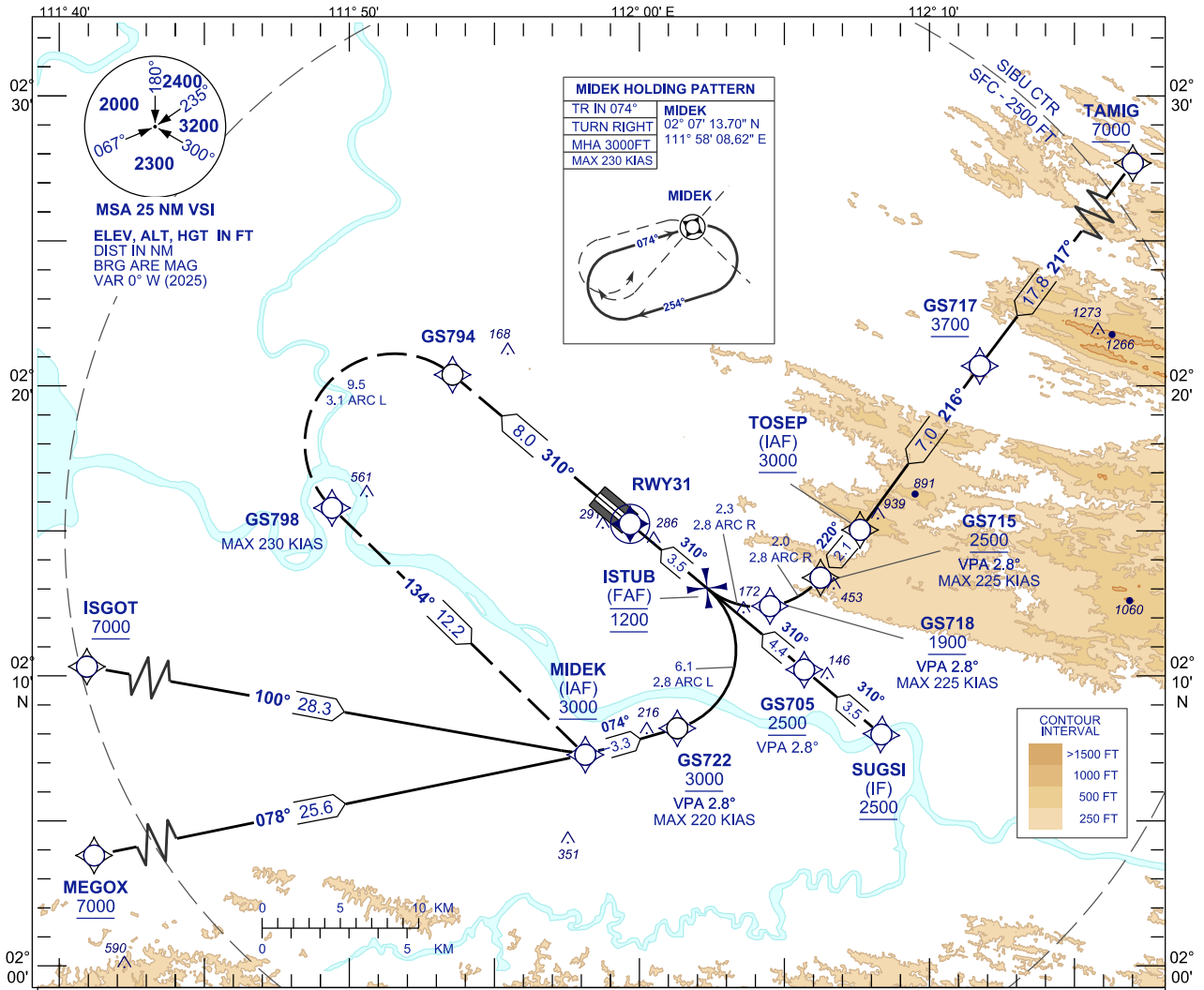


**INSTRUMENT
APPROACH
CHART - ICAO**

AERODROME ELEV 121 FT
HEIGHTS RELATED TO
THR RWY 31 - ELEV 121 FT

APP	122.60 (P), 124.40 (S)
TWR	123.20
SMC	121.90
ATIS	127.65

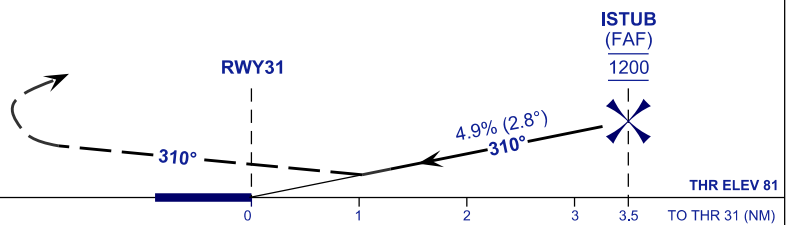
**SIBU/SIBU (WBGS)
RNP Z RWY 31 (AR)**



TCH 50
VPA 2.8°

TRANSITION LEVEL FL 130
TRANSITION ALT 11000

MISSED APPROACH
CLIMB 3000FT OR ABOVE VIA RNP Z
MISSED APCH TRACK TO MIDEK AND HOLD,
OR AS DIRECTED BY ATC.



STRAIGHT IN-APPROACH	OCA (H)	
CATEGORY OF AIRCRAFT	C	D
RNP 0.3	580 (459)	

AUTHORIZATION REQUIRED

NOTES

- 1) APPROACH NOT AUTHORIZED WHEN AIRPORT TEMPRETURE BELOW 19°C OR ABOVE 40°C.
- 2) RF REQUIRED.
- 3) WBGS ALTIMETER SETTING REQUIRED.
- 4) GNSS REQUIRED.
- 5) PAPI AND VERTICAL PATH ANGLE NOT COINCIDENT.
- 6) RNP 0.30 REQUIRED FROM IAFS/IF TO RWY.

REPLACEMENT CHART