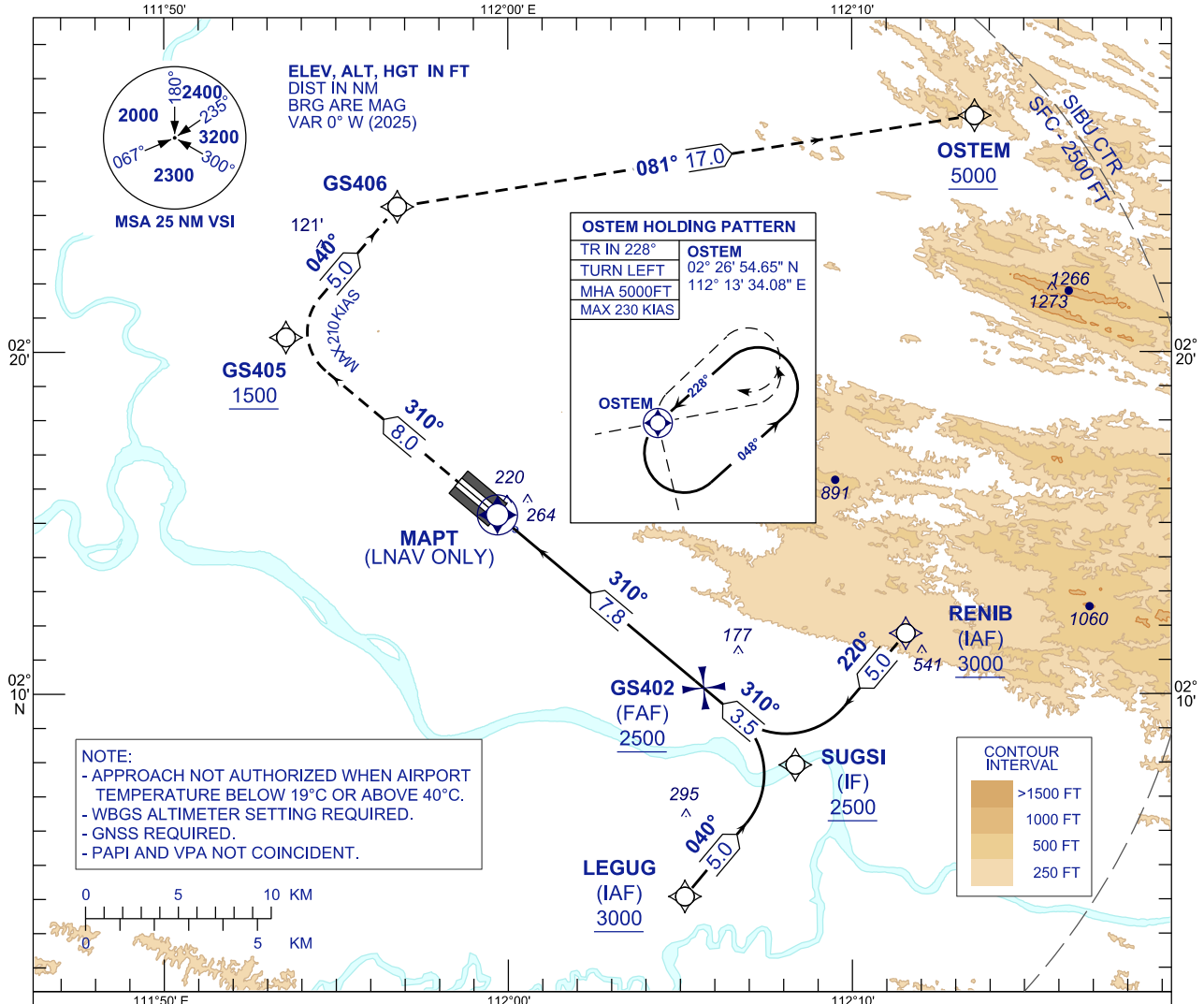


**INSTRUMENT  
APPROACH  
CHART - ICAO**

AERODROME ELEV 121 FT  
HEIGHTS RELATED TO  
THR RWY 31 - ELEV 121 FT

APP	122.60 (P), 124.40 (S)
TWR	123.20
SMC	121.90
ATIS	127.65

**SIBU/SIBU (WBGS)  
RNP Y RWY 31**



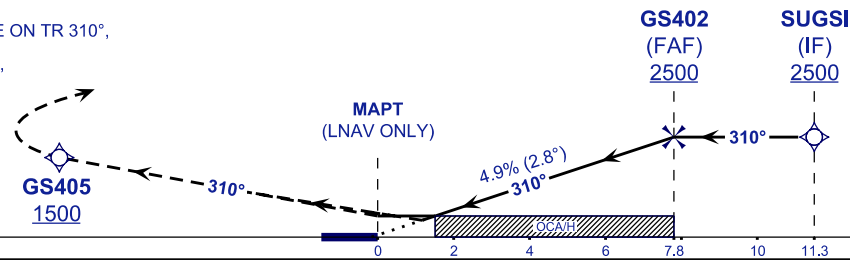
**NOTE:**  
- APPROACH NOT AUTHORIZED WHEN AIRPORT TEMPERATURE BELOW 19°C OR ABOVE 40°C.  
- WBGS ALTIMETER SETTING REQUIRED.  
- GNSS REQUIRED.  
- PAPI AND VPA NOT COINCIDENT.

TRANSITION LEVEL FL 130  
TRANSITION ALT 11000  
VPA 2.8°

**MISSED APPROACH**  
AT MAPT/OCA(H) CLIMB 5000FT OR ABOVE ON TR 310°, TO GS405 THEN TURN RIGHT TO GS406 THEN TURN RIGHT TO OSTEM AND HOLD, OR AS DIRECTED BY ATC

**CAUTION**  
MISSED APPROACH TURN SPEED  
MAX 210 KIAS

TCH 50  
THR ELEV 121  
TO THR 31 (NM)



CATEGORY OF AIRCRAFT	OCA (H)			
	A	B	C	D
LNAV	620 (499)			
LNAV / VNAV	488 (367)	500 (379)	508 (387)	519 (398)

DIST THR / RWY31	NM	7.8	6.8	5.8	4.8	3.8	2.8	1.8	0.8
ALTITUDE	FT	2500	2192	1895	1598	1300	1003	706	409

GROUND SPEED (GS)	KT	80	100	120	140	160	180
FAF - THR31 (7.8 NM)	MIN:SEC	5:53	4:42	3:55	3:22	2:56	2:37
RATE OF DESCEND (318.4 FT/NM)	FT/MIN	400	500	590	690	790	890

NEW CHART