

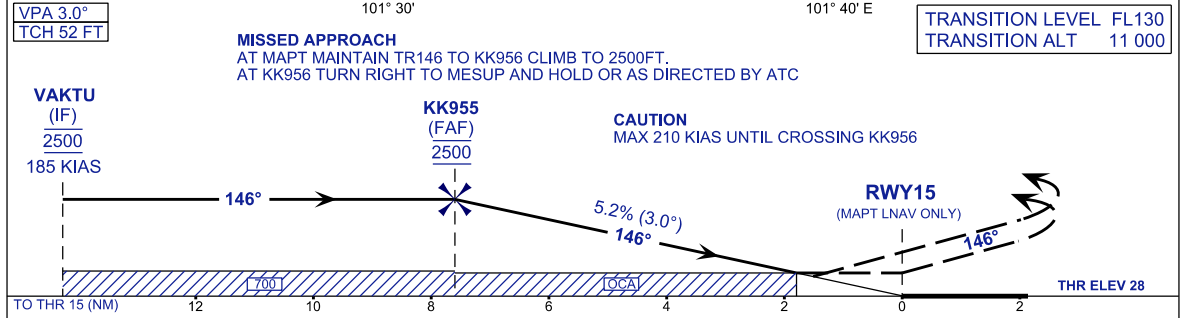
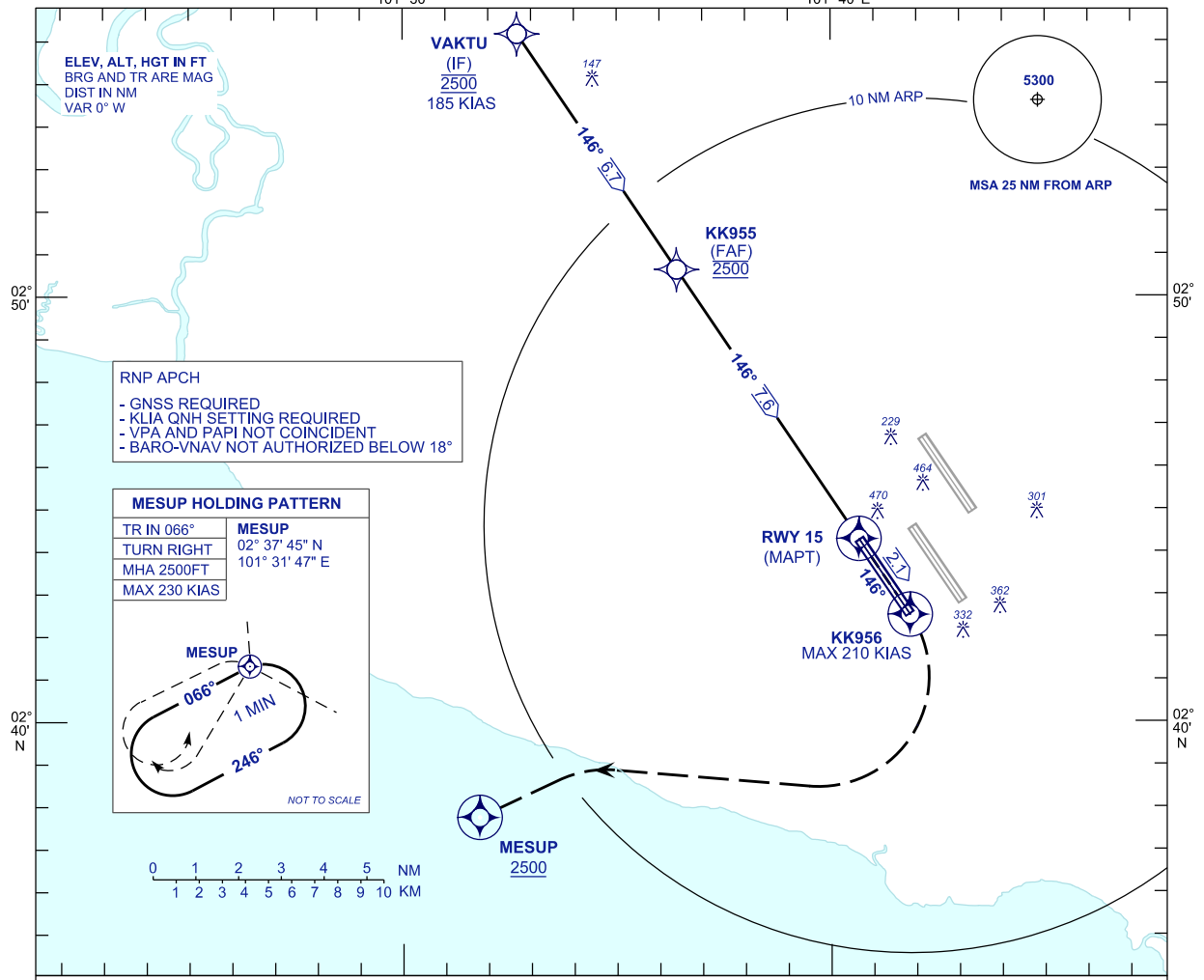
**INSTRUMENT  
APPROACH  
CHART - ICAO**

**AERODROME ELEV 69 FT**  
HEIGHT RELATED TO  
THR RWY 15 - ELEV 28 FT

APP	TWR	SMC	ATIS
119.45	119.80	118.05	128.05
124.20			
125.10			

**SEPANG/KL INTERNATIONAL  
AIRPORT (WMCK)**

RNP Y RWY 15



STRAIGHT - IN APPROACH	OCA (OCH)				GROUND SPEED (GS)		KNOTS		80	100	120	140	160	180	
CATEGORY OF AIRCRAFT	A	B	C	D	FAF - RWY15 (7.6 NM)		MIN:SEC		5:42	4:34	3:48	3:16	2:51	2:32	
LNAV / VNAV	560 (532)				RATE OF DESCENT (318.5 FT/NM)		FT/MIN		420	530	630	740	840	950	
LNAV	650 (622)				DIST THR / RWY15		NM	7.6	6.6	5.6	4.6	3.6	2.6	1.6	0.6
	ALTITUDE		FT		2500	2182	1864	1545	1227	909	590				

CHANGES : RENAMING CHART IDENTIFICATION