

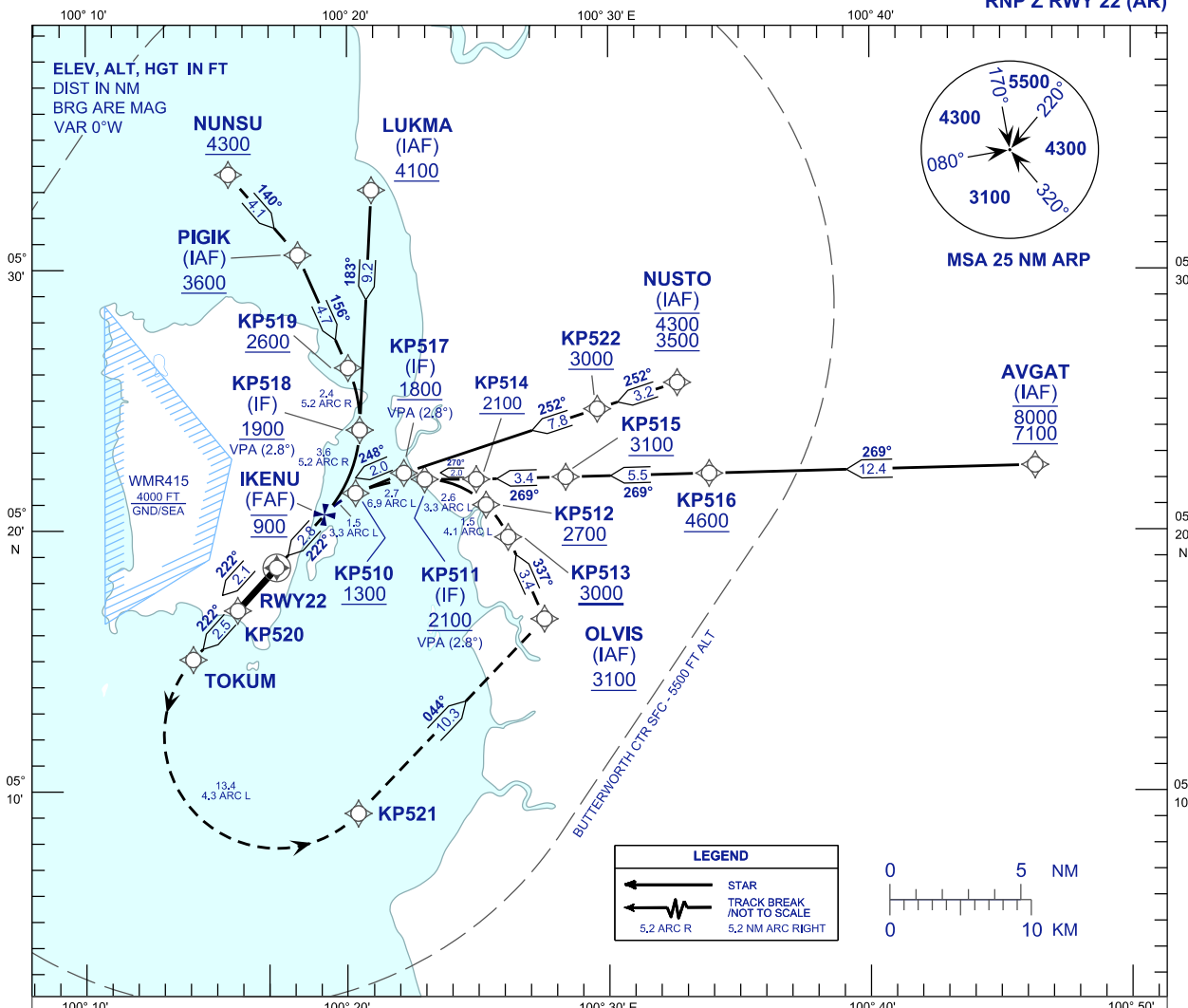
**INSTRUMENT
APPROACH
CHART - ICAO**

AERODROME ELEV 10 FT
HEIGHT RELATED TO
THR RWY 22 - ELEV 10 FT

APP 125.925
TWR 121.10
SMC 121.60, 121.90
ATIS 126.40

**PENANG/PENANG
INTERNATIONAL AIRPORT (WMKP)**

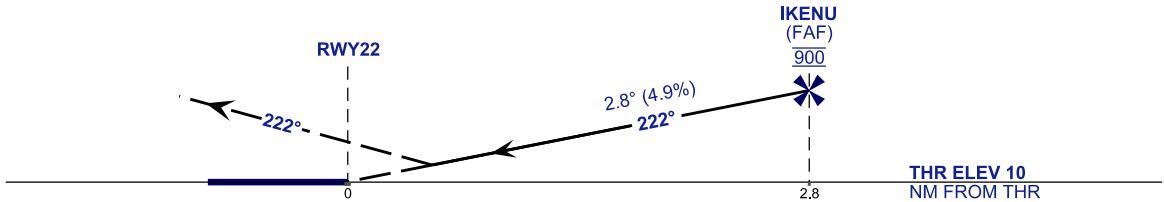
RNP Z RWY 22 (AR)



VPA 2.8°
RDH 50FT

MISSED APPROACH
CLIMB TO 3100FT VIA THE RNP MISSED APPROACH,
TRACK TO OLVIS OR AS DIRECTED BY ATC.

TRANSITION LEVEL FL130
TRANSITION ALT 11000 FT



STRAIGHT-IN APPROACH	OCA (OCH)	
CATEGORY OF AIRCRAFT	C	D
RNP (0.30)	620 (610)	
CIRCLING AND ALTERNATE N/A		

AUTHORIZATION REQUIRED

- NOTES**
- 1) APPROACH NOT AUTHORIZED WHEN AIRPORT TEMPERATURE BELOW 19°C OR ABOVE 40°C.
 - 2) RF REQUIRED.
 - 3) WMKP ALTIMETER SETTING REQUIRED.
 - 4) GNSS REQUIRED.
 - 5) PAPI AND VERTICAL PATH ANGLE NOT COINCIDENT.
 - 6) RNP 1.0 REQUIRED FROM NUNSU TO IAF.
 - 7) RNP 0.3 REQUIRED FROM IAF'S TO FAF.
 - 8) RNP 0.3 REQUIRED FROM DA TO KP520.
 - 9) RNP 0.5 REQUIRED FROM KP520 TO TOKUM.
 - 10) LATERAL TRANSITION TO MAP MUST NOT BE INITIATED PRIOR TO DA/H POSITION.

CHANGES : KK514 TO READ AS KP514