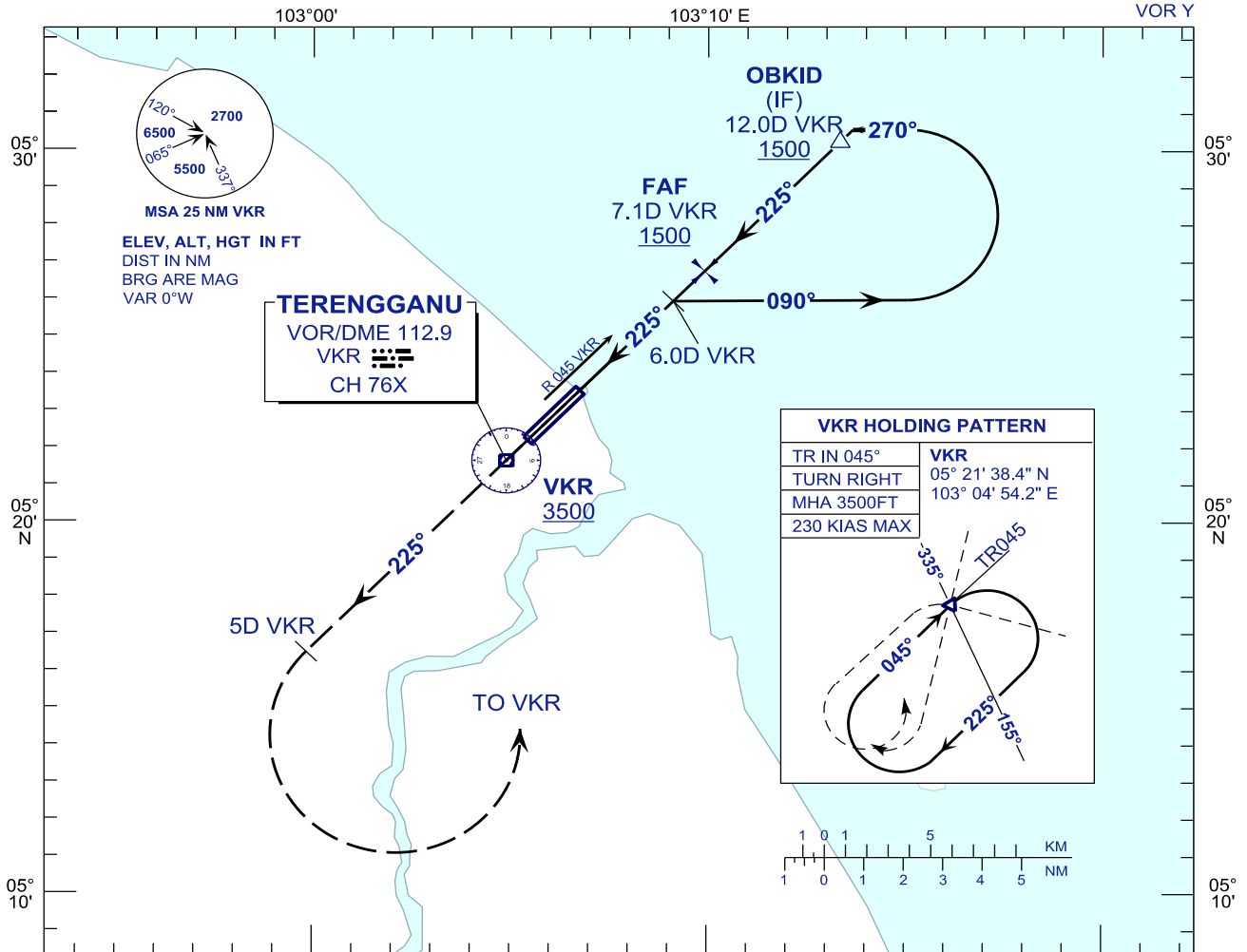


INSTRUMENT APPROACH CHART - ICAO

AERODROME ELEV 20 FT
HEIGHT RELATED TO
THR RWY 22 - ELEV 20 FT

TWR	123.6 (PRY)
	119.05 (SRY)
	235.32 (UHF)
	121.5 (EMERG)
SMC	121.6
ATIS	126.65

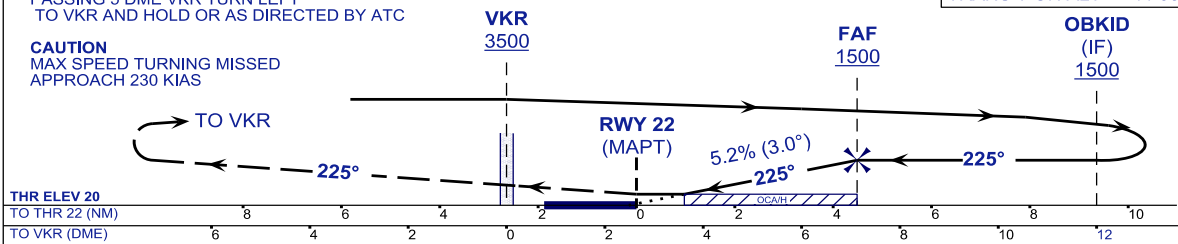
**KUALA TERENGGANU/
SULTAN MAHMUD (WMKN)
RWY 22**



MISSED APPROACH
AT MAPT CLIMB TO 3500FT ON TR 225°
PASSING 5 DME VKR TURN LEFT
TO VKR AND HOLD OR AS DIRECTED BY ATC

TRANSITION LEVEL FL130
TRANSITION ALT 11 000

CAUTION
MAX SPEED TURNING MISSED
APPROACH 230 KIAS



OCA/OCH	A	B	C	D
VOR/DME	380/(360)			

DME VKR	NM	7.1	6.1	5.1	4.1	3.1
DIST THR/RWY22	NM	4.5	3.5	2.5	1.5	0.5
ALTITUDE	FT	1500	1185	867	548	230

GS	KT	80	100	120	140	160	180
FAF - RWY22 (4.5NM)	MIN:SEC	3:22	2:42	2:15	1:55	1:41	1:30
RATE OF DESCEND(318.5FT/NM)	FT/MIN	420	530	640	740	850	960

CHANGES : ATS COMMUNICATION FREQUENCIES