

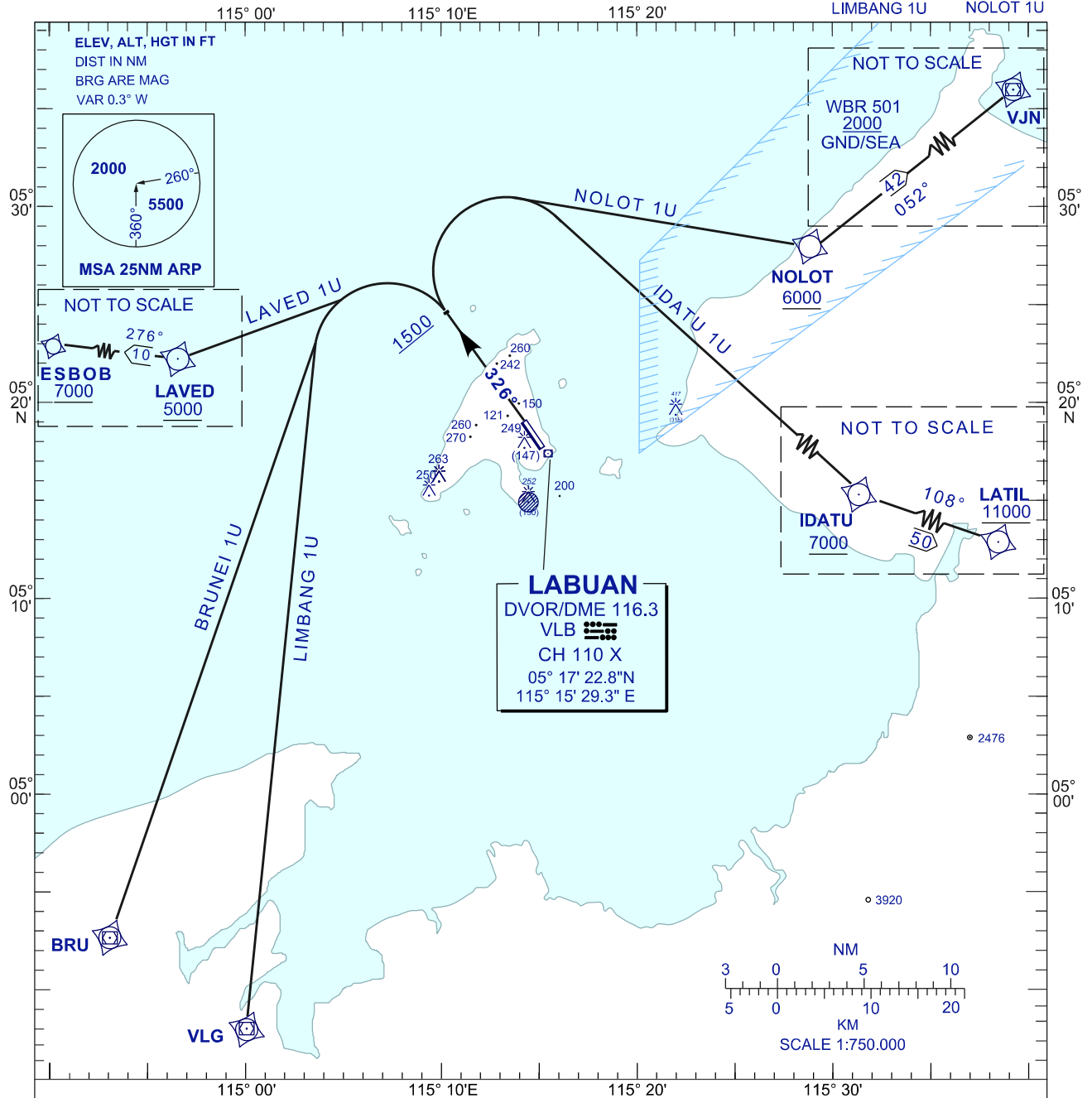
**STANDARD DEPARTURE CHART
INSTRUMENT (SID) - ICAO**

TRANSITION ALTITUDE
11,000 FT

APP 119.70, 249.30
TWR 118.10, 238.10
SMC 118.35, 235.10
ATIS 126.85

**LABUAN/LABUAN (WBKL)
DEPARTURES RWY 32 (RNAV 1)**

LAVED 1U
BRUNEI 1U
LIMBANG 1U
IDATU 1U
NOLOT 1U



COMMUNICATION FAILURE :

- SQUAWK 7600°
- IF UNDER PILOT NAVIGATION, MAINTAIN LAST ASSIGNED LEVEL FOR 3 MINUTES, IF NO ONWARD CLEARANCE IS RECEIVED. SUBSEQUENTLY CLIMB TO COMPLY WITH SID.
- IF BELOW MSA, CLIMB TO MSA, THEN TRACK TO INTERCEPT CLEARED OR PREVIOUSLY ASSIGNED SID TO DESTINATION.

CHANGES : UPDATING THE CHART FORMAT.