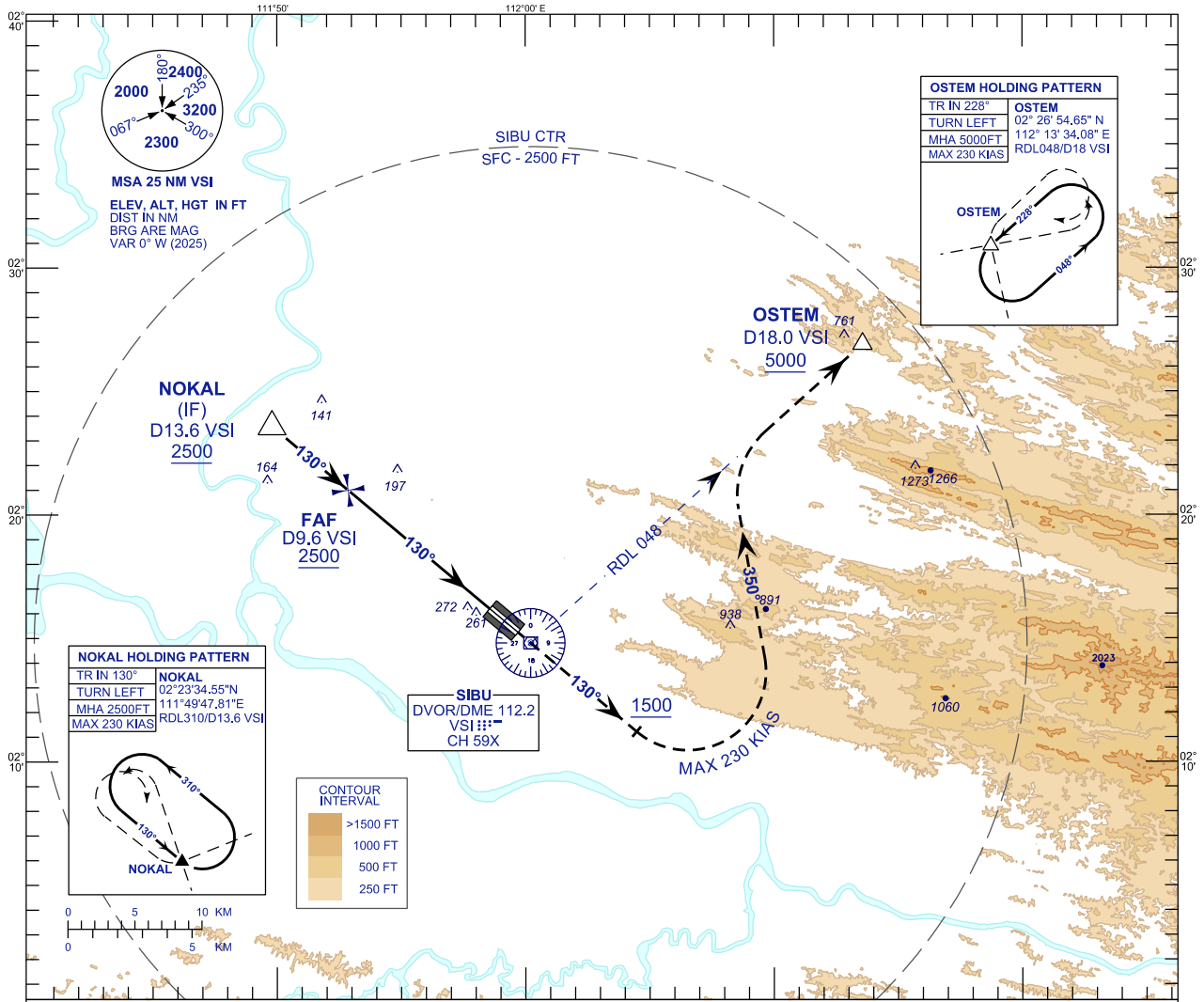


**INSTRUMENT  
APPROACH  
CHART - ICAO**

AERODROME ELEV 121 FT  
HEIGHTS RELATED TO  
THR RWY 13 - ELEV 81 FT

APP 122.60 (P), 124.40 (S)  
TWR 123.20  
SMC 121.90  
ATIS 127.65

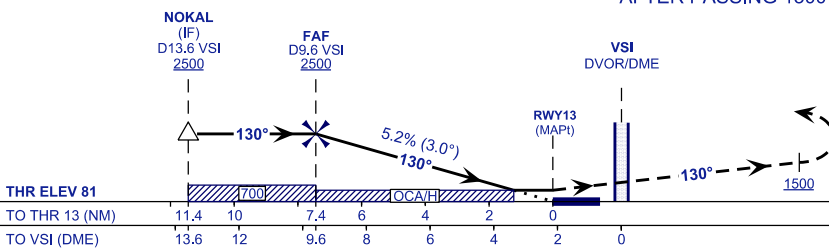
**SIBU/SIBU (WBGS)  
VOR Z RWY 13**



TRANSITION LEVEL FL 130  
TRANSITION ALT 11000

**MISSED APPROACH**  
AT MAPT/OCA(H) CLIMB 5000FT OR ABOVE ON TR 130°,  
AFTER PASSING 1500 FT TURN LEFT TO OSTEM AND HOLD,  
OR AS DIRECTED BY ATC

**CAUTION**  
MISSED APPROACH TURN SPEED  
MAX 230 KIAS



|                      |           |   |   |   |
|----------------------|-----------|---|---|---|
|                      | OCA (H)   |   |   |   |
| CATEGORY OF AIRCRAFT | A         | B | C | D |
| VOR/DME              | 520 (439) |   |   |   |

|                  |    |      |      |      |      |      |     |     |     |
|------------------|----|------|------|------|------|------|-----|-----|-----|
| DME VSI          | NM | 9.6  | 8.6  | 7.6  | 6.6  | 5.6  | 4.6 | 3.6 | 2.6 |
| DIST THR / RWY13 | NM | 7.4  | 6.4  | 5.4  | 4.4  | 3.4  | 2.4 | 1.4 | 0.4 |
| ALTITUDE         | FT | 2500 | 2170 | 1851 | 1533 | 1215 | 896 | 578 | 259 |

|                               |         |      |      |      |      |      |      |
|-------------------------------|---------|------|------|------|------|------|------|
| GROUND SPEED (GS)             | KT      | 80   | 100  | 120  | 140  | 160  | 180  |
| FAF - THR (7.4 NM)            | MIN:SEC | 5:35 | 4:28 | 3:43 | 3:11 | 2:47 | 2:29 |
| RATE OF DESCEND (318.4 FT/NM) | FT/MIN  | 420  | 530  | 640  | 740  | 850  | 960  |

NEW CHART