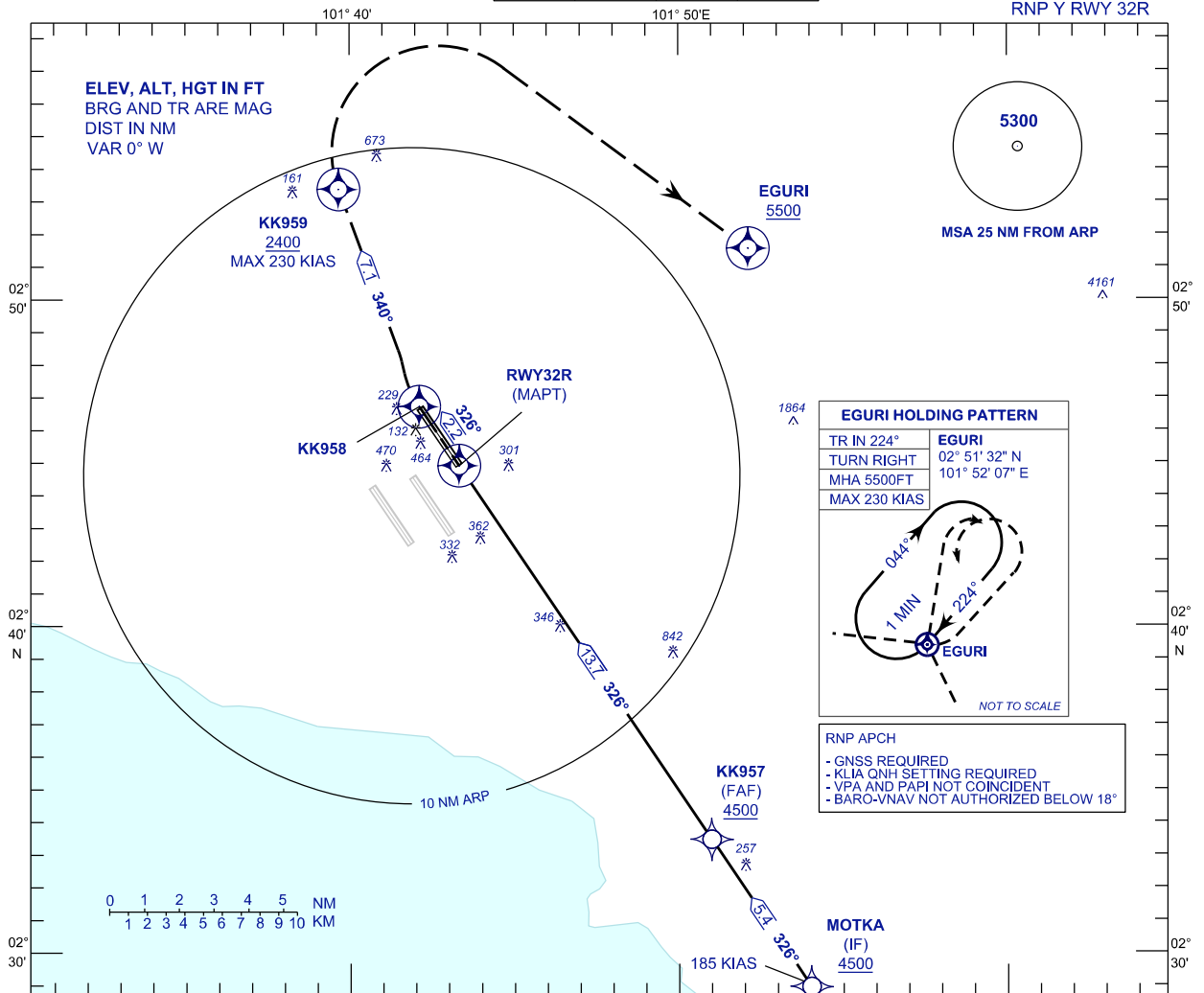


**INSTRUMENT  
APPROACH  
CHART - ICAO**

**AERODROME ELEV 69 FT**  
HEIGHT RELATED TO  
THR RWY 32R - ELEV 69 FT

APP	TWR	SMC	ATIS
121.25	118.80	121.65	128.05
120.35			
135.75			

**SEPANG/KL INTERNATIONAL  
AIRPORT (WMKK)**

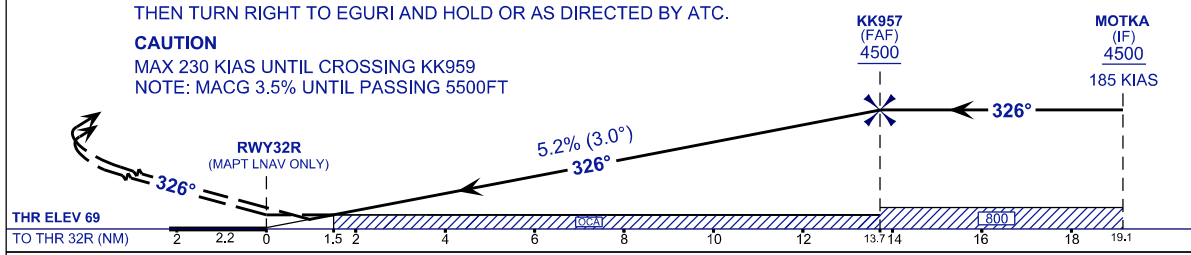


VPA 3.0°  
TCH 56FT

**MISSED APPROACH**  
AT MAPT TR326 TO KK958 CLIMB TO 5500FT. AT KK958 TURN RIGHT TO KK959 THEN TURN RIGHT TO EGURI AND HOLD OR AS DIRECTED BY ATC.

**CAUTION**  
MAX 230 KIAS UNTIL CROSSING KK959  
NOTE: MACG 3.5% UNTIL PASSING 5500FT

TRANSITION LEVEL FL130  
TRANSITION ALT 11 000



STRAIGHT-IN APPROACH	OCA (OCH)				GROUND SPEED (GS)	KNOTS	80	100	120	140	160	180		
	A	B	C	D			MIN:SEC	10:19	8:15	6:53	5:54	5:10	4:35	
CATEGORY OF AIRCRAFT					FAF - RWY32R (13.7 NM)									
LNAV / VNAV	3.5% MACG	430 (361)			RATE OF DESCENT (318.5 FT/NM)	FT/MIN	420	530	630	740	840	950		
	2.5% MACG	1210 (1141)			DIST THR / RWY32R	NM	13.7	12.7	11.7	10.7	9.7	8.7	7.7	6.7
LNAV	3.5% MACG	600 (531)			ALTITUDE	FT	4500	4183	3865	3546	3228	2910	2591	2273
	2.5% MACG	1590 (1521)			DIST THR / RWY32R	NM	5.7	4.7	3.7	2.7	1.7	0.7		
				ALTITUDE	FT	1954	1636	1317	999	680	362			

① MACG - MISSED APPROACH CLIMB GRADIENT  
IF UNABLE TO MAINTAIN A 3.5% MACG, USE LNAV OR LNAV / VNAV 2.5% OCA

CHANGES : TWR FREQUENCY