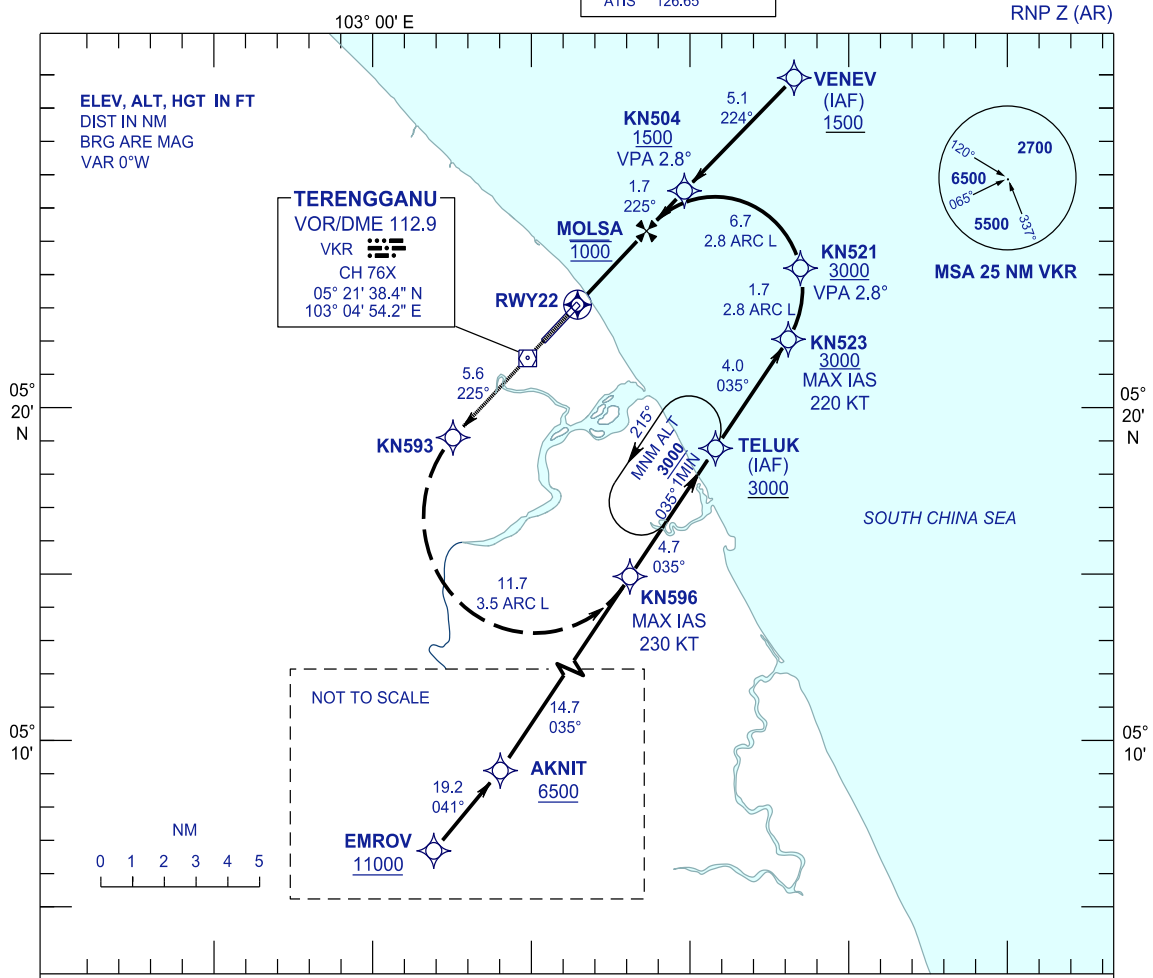


**INSTRUMENT  
APPROACH  
CHART - ICAO**

AERODROME ELEV 20 FT  
HEIGHT RELATED TO  
THR RWY 22 - ELEV 20 FT

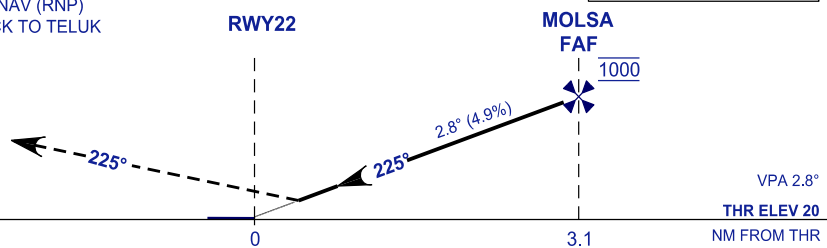
TWR	123.6 (PRY)
	119.05 (SRF)
	235.32 (UHF)
	121.5 (EMERG)
SMC	121.6
ATIS	126.65

**KUALA TERENGGANU/  
SULTAN MAHMUD (WMKN)  
RWY22**



**MISSED APPROACH**  
CLIMB TO 3000 VIA THE RNAV (RNP)  
MISSED APPROACH TRACK TO TELUK  
OR AS DIRECTED BY ATC

RDH 50 FT



OCA/H	
ACFT CAT.	C      D
RNP 0.3	466 (446) 2.1KM

GROUND SPEED - KT	70	90	100	120	140	160
RATE OF DESCENT (2.8°) ( FT/MIN )	347	446	495	594	693	792

DISTANCE TO THRESHOLD (NM)	3.1	2	1
ALTITUDE (FT)	1000	670	370

- 1. AUTHORIZATION REQUIRED
- 2. GNSS REQUIRED
- 3. RF REQUIRED
- 4. APPROACH NOT AUTHORIZED WHEN AIRPORT TEMPERATURE BELOW 20°C OR ABOVE 34°C
- 5. WMKN ALTIMETER SETTING REQUIRED.
- 6. PAPI AND VERTICAL PATH ANGLE NOT COINCIDENT
- 7. PROCEDURE REQUIRES RNP 1.0 IN FEEDER SEGMENTS
- 8. PROCEDURE REQUIRES RNP 0.3 FROM IAF TO RWY
- 9. VSS DOES NOT TAKE INTO ACCOUNT TRANSIENT OBJECTS.

CHANGES : ATS COMMUNICATION FREQUENCIES