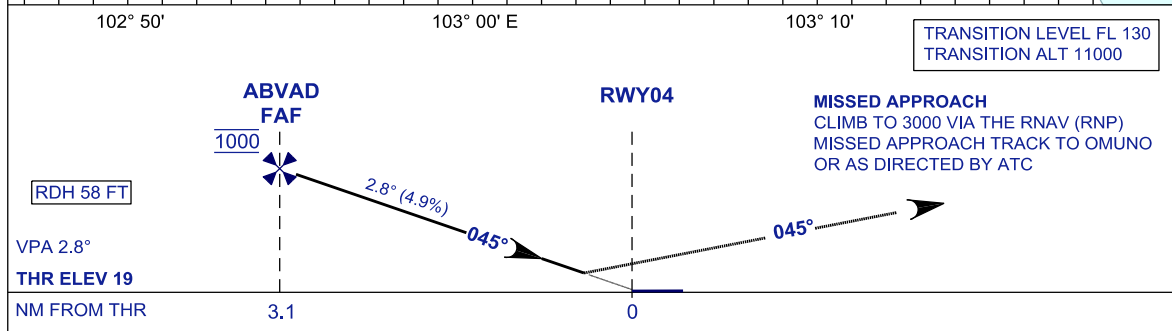
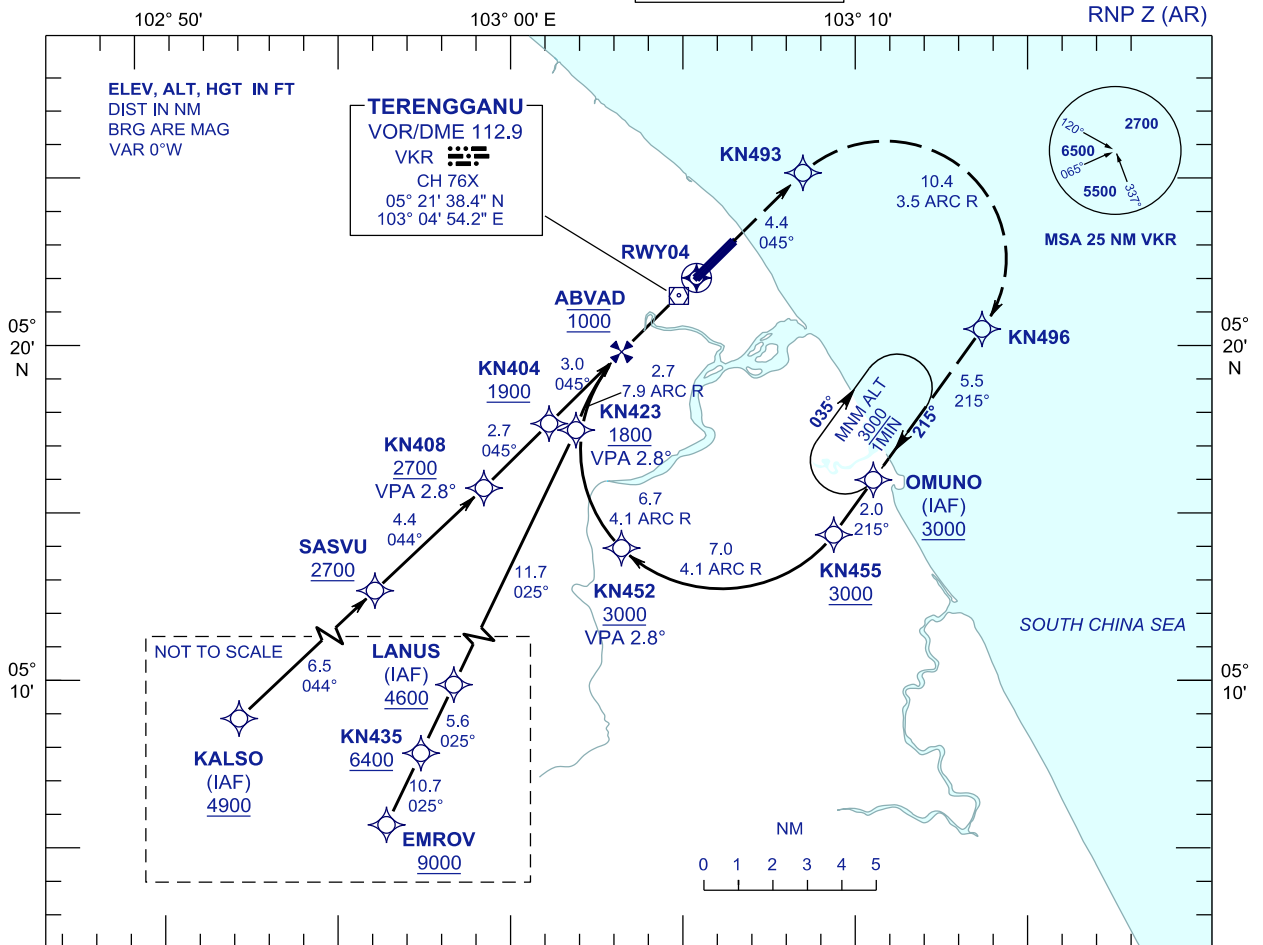


**INSTRUMENT  
APPROACH  
CHART - ICAO**

**AERODROME ELEV 20 FT  
HEIGHT RELATED TO  
THR RWY 04 - ELEV 19 FT**

TWR	123.6 (PRY)
	119.05 (SRY)
	235.32 (UHF)
	121.5 (EMERG)
SMC	121.6
ATIS	126.65

**KUALA TERENGGANU/  
SULTAN MAHMUD (WMKN)  
RWY 04**



OCA/H	
ACFT CAT.	C D
RNP 0.3	459 (440) 1.5KM

GROUND SPEED - KT	70	90	100	120	140	160
RATE OF DESCENT (2.8°) ( FT/MIN )	347	446	495	594	693	792

DISTANCE TO THRESHOLD (NM)	3.1	2	1
ALTITUDE (FT)	1000	670	370

- AUTHORIZATION REQUIRED**
- GNSS REQUIRED**
- RF REQUIRED**
- APPROACH NOT AUTHORIZED WHEN AIRPORT TEMPERATURE BELOW 20°C OR ABOVE 34°C
- WMKN ALTIMETER SETTING REQUIRED.
- PAPI AND VERTICAL PATH ANGLE NOT COINCIDENT
- PROCEDURE REQUIRES RNP 1.0 IN FEEDER SEGMENTS
- PROCEDURE REQUIRES RNP 0.3 FROM IAF TO RWY

**CHANGES : ATS COMMUNICATION FREQUENCIES**