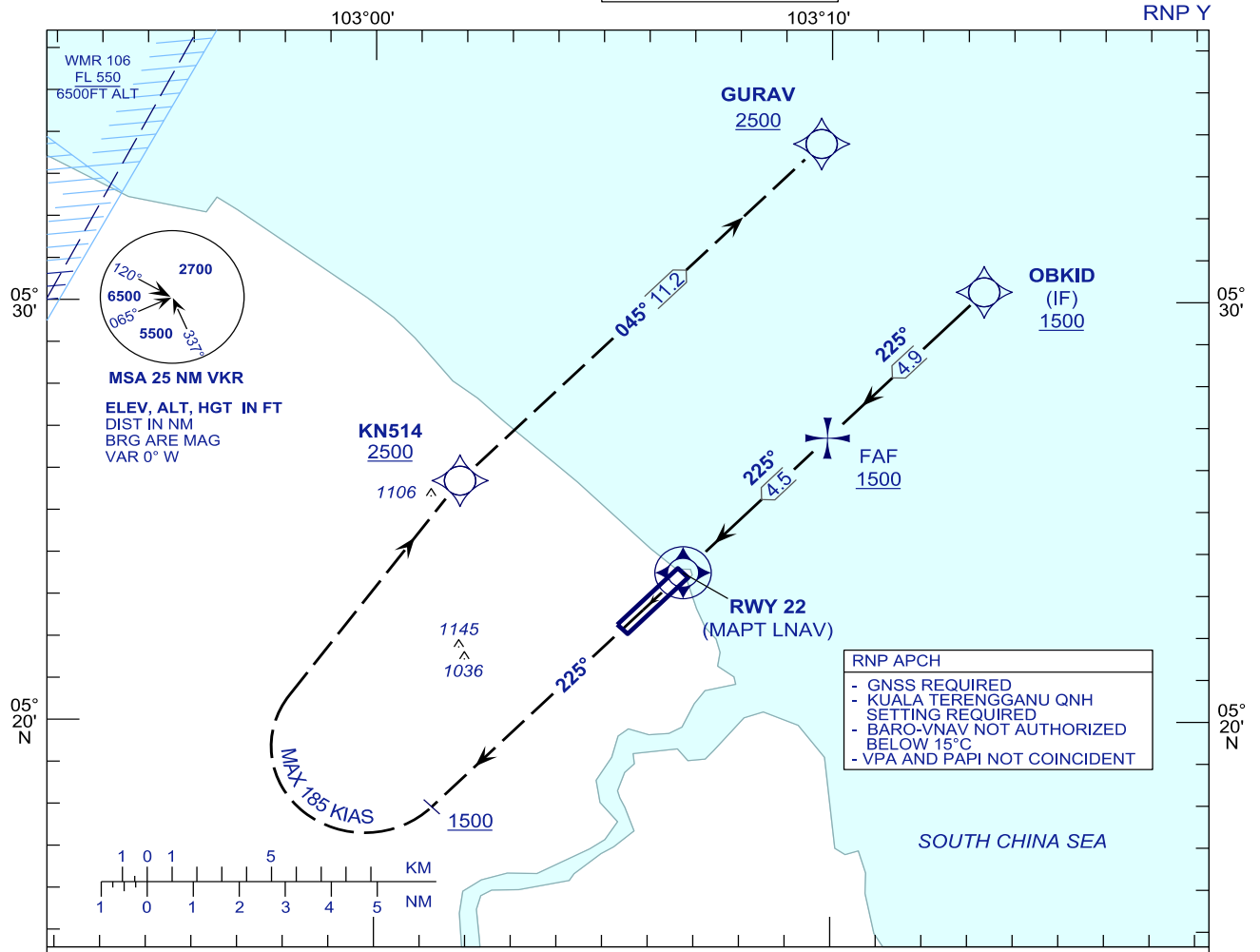


**INSTRUMENT
APPROACH
CHART - ICAO**

AERODROME ELEV 20 FT
HEIGHT RELATED TO
THR RWY 22 - ELEV 20 FT

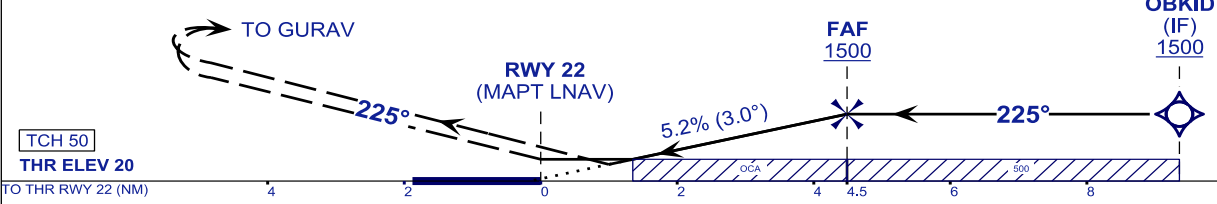
TWR	123.6 (PRY)
	119.05 (SRY)
	235.32 (UHF)
	121.5 (EMERG)
SMC	121.6
ATIS	126.65

**KUALA TERENGGANU/
SULTAN MAHMUD (WMKN)
RWY 22**



MISSED APPROACH
AT MAPT CLIMB TO 2500FT ON HDG 225°,
PASSING 1500FT TURN RIGHT TO KN514 THEN
TO GURAV OR AS DIRECTED BY ATC

TRANSITION LEVEL FL130
TRANSITION ALT 11000



OCA (OCH)	A	B	C	D	DIST THR/RWY22	NM	4.5	3.5	2.5	1.5	0.5	
LNAV	500 (480)				ALTITUDE	FT	1500	1185	867	548	230	
LNAV / VNAV	342 (322)	388 (368)			GROUND SPEED (GS)	KTS	80	100	120	140	160	180
					FAP - RWY22 (4.5 NM)	MIN:SEC	3:22	2:42	2:15	1:55	1:41	1:30
					RATE OF DESCEND (318.4 FT/NM)	FT/MIN	420	530	640	740	850	960

CHANGES : ATS COMMUNICATION FREQUENCIES