

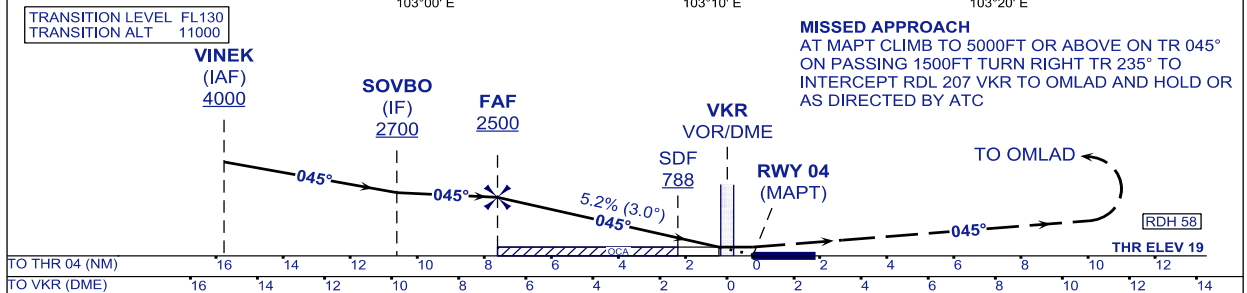
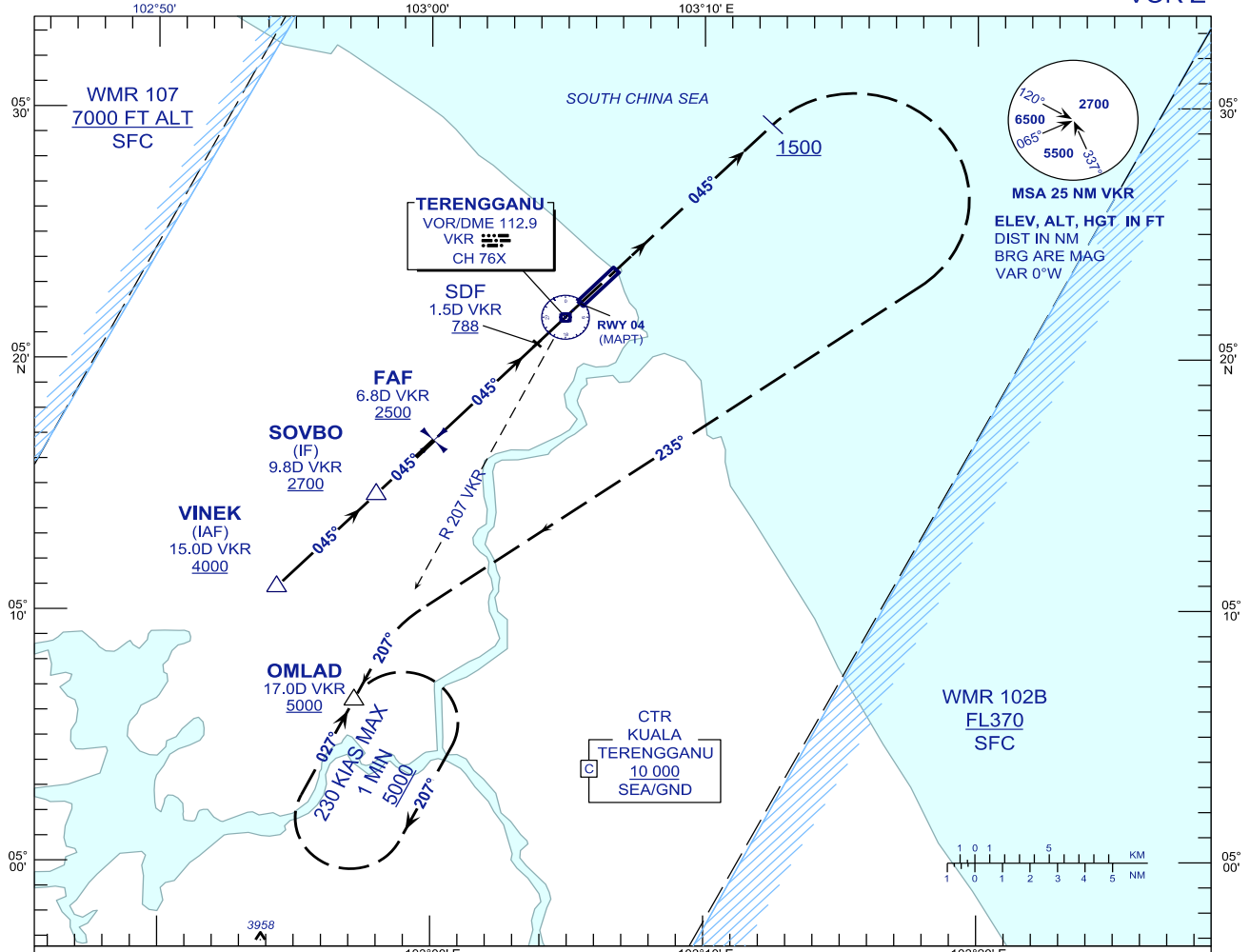
**INSTRUMENT
APPROACH
CHART - ICAO**

AERODROME ELEV 20 FT
HEIGHT RELATED TO
THR RWY 04 - ELEV 19 FT

TWR	123.6 (PRY)
	119.05 (SRY)
	235.32 (UHF)
	121.5 (EMERG)
SMC	121.6
ATIS	126.65

**KUALA TERENGGANU/
SULTAN MAHMUD (WMKN)
RWY 04**

VOR Z



OCA (OCH)	A	B	C	D
VOR/DME	390/(371)			

DME VKR	NM	6.8	5.8	4.8	3.8	2.8	1.8	0.8	0.2
DIST THR/RWY04	NM	7.6	6.6	5.6	4.6	3.6	2.6	1.6	0.6
ALTITUDE	FT	2500	2178	1858	1538	1218	898	579	260

GROUND SPEED (GS)	KNOTS	80	100	120	140	160	180
FAP - RWY04 (7.6 NM)	MIN:SEC	5:42	4:34	3:48	3:16	2:51	2:32
RATE OF DESCEND (318.4 FT/NM)	FT/MIN	420	530	640	740	850	960

CHANGES : ATS COMMUNICATION FREQUENCIES