

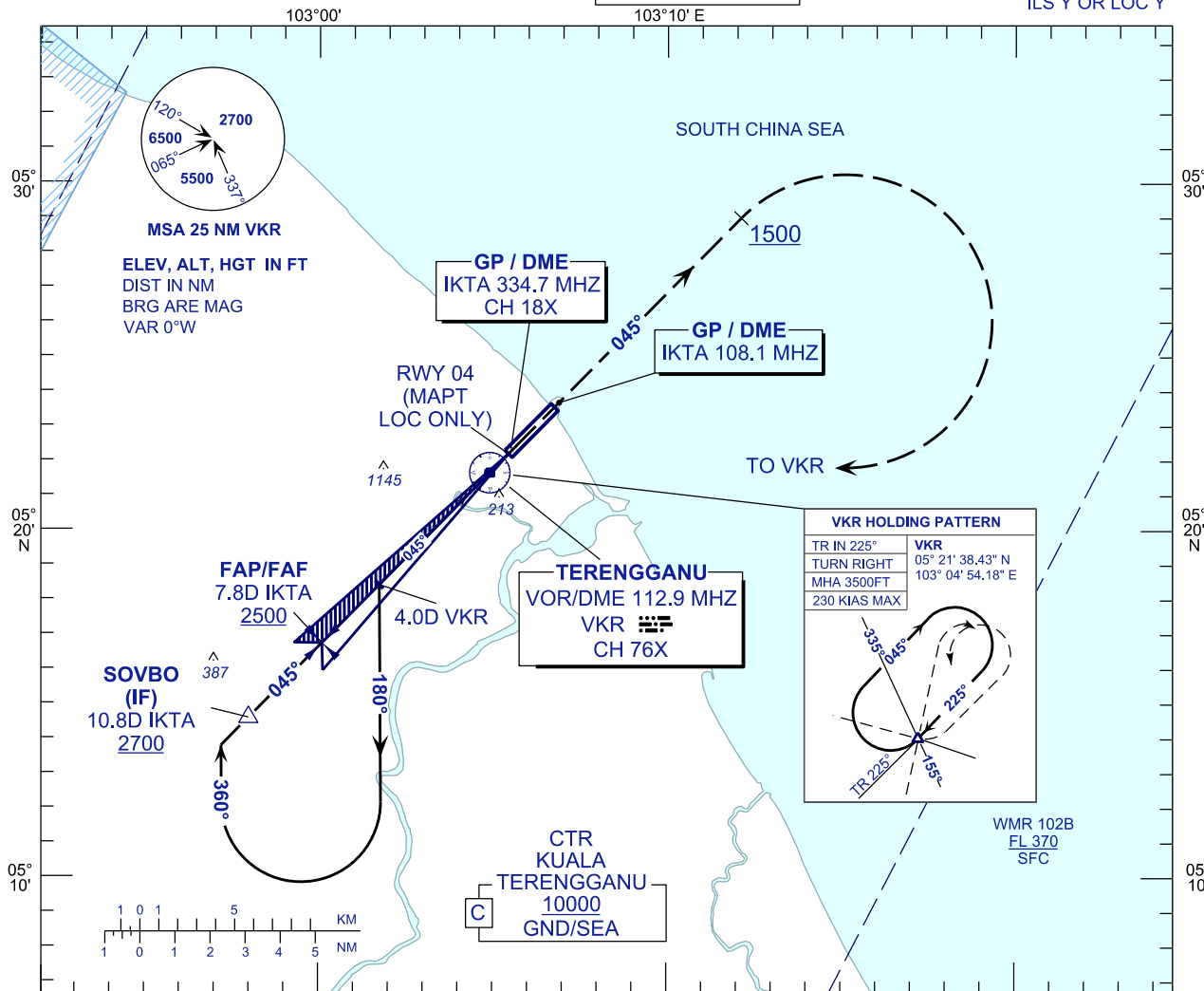
**INSTRUMENT  
APPROACH  
CHART - ICAO**

AERODROME ELEV 20 FT  
HEIGHT RELATED TO  
THR RWY 04 - ELEV 19 FT

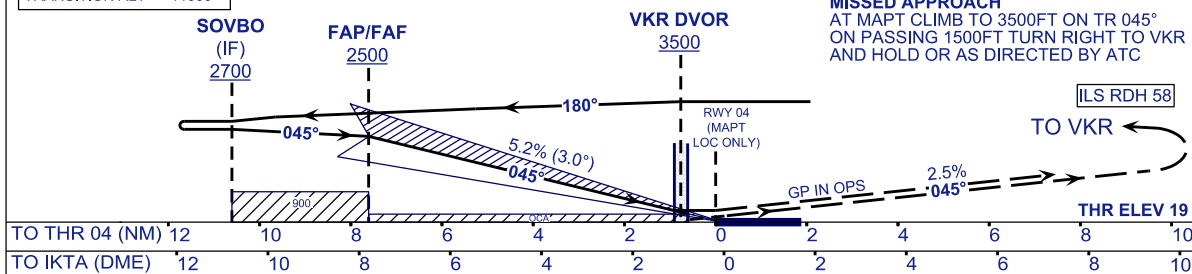
TWR	123.6 (PRY)
	119.05 (SRY)
	235.32 (UHF)
	121.5 (EMERG)
SMC	121.6
ATIS	126.65

**KUALA TERENGGANU/  
SULTAN MAHMUD (WMKN)  
RWY 04**

ILS Y OR LOC Y



TRANSITION LEVEL FL130  
TRANSITION ALT 11000



OCA (OCH)	A	B	C	D
ILS/DME CAT I	256 (237)			
LOC/DME	380 (361)			

DME IKTA	NM	7.8	6.8	5.8	4.8	3.8	2.8	1.8	0.8
DIST THR/RWY04	NM	7.6	6.6	5.6	4.6	3.6	2.6	1.6	0.6
ALTITUDE	FT	2500	2179	1861	1542	1224	905	587	268

GROUND SPEED (GS)	KNOTS	80	100	120	140	160	180
FAP - RWY04 (7.6 NM)	MIN:SEC	5:42	4:34	3:48	3:16	2:51	2:32
RATE OF DESCEND (318.4 FT/NM)	FT/MIN	420	530	630	740	850	960

CHANGES : ATS COMMUNICATION FREQUENCIES