

STANDARD ARRIVAL CHART  
INSTRUMENT (STAR) - ICAO

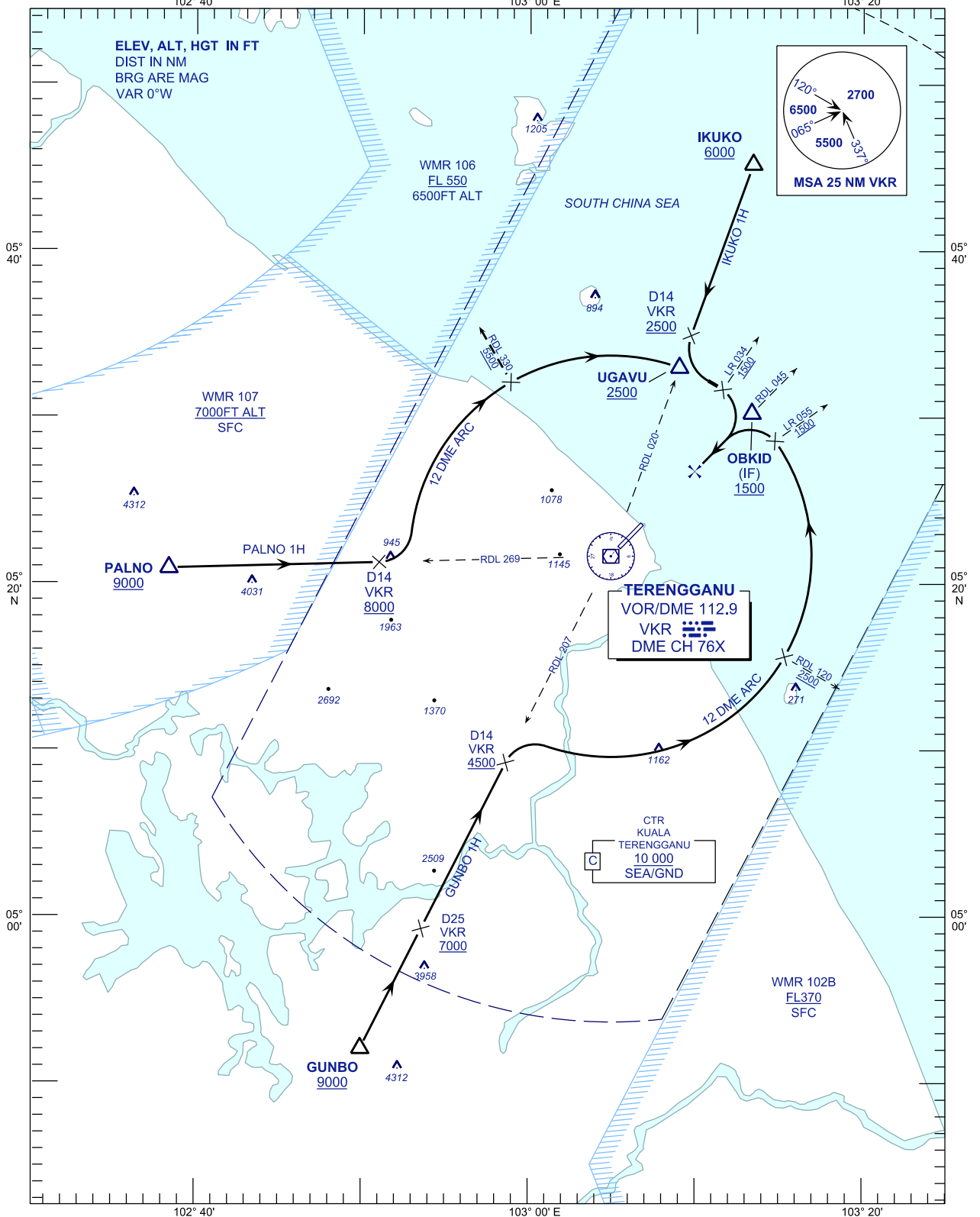
KUALA TERENGGANU/  
SULTAN MAHMUD (WMKN)

TRANSITION ALTITUDE  
11 000 FT

TWR	123.6 (PRY)
	119.05 (SRV)
	235.32 (UHF)
	121.5 (EMERG)
SMC	121.6
ATIS	126.65

VOR/DME ARC RWY 22  
PALNO 1H GUNBO 1H IKUKO 1H

BANK ANGLE : 25° OR 3°/SEC



TERENGGANU  
VOR/DME 112.9  
VCR  
DME CH 76X

CTR  
KUALA  
TERENGGANU  
10 000  
SEA/GND

CHANGES : ATS COMMUNICATION FREQUENCIES